

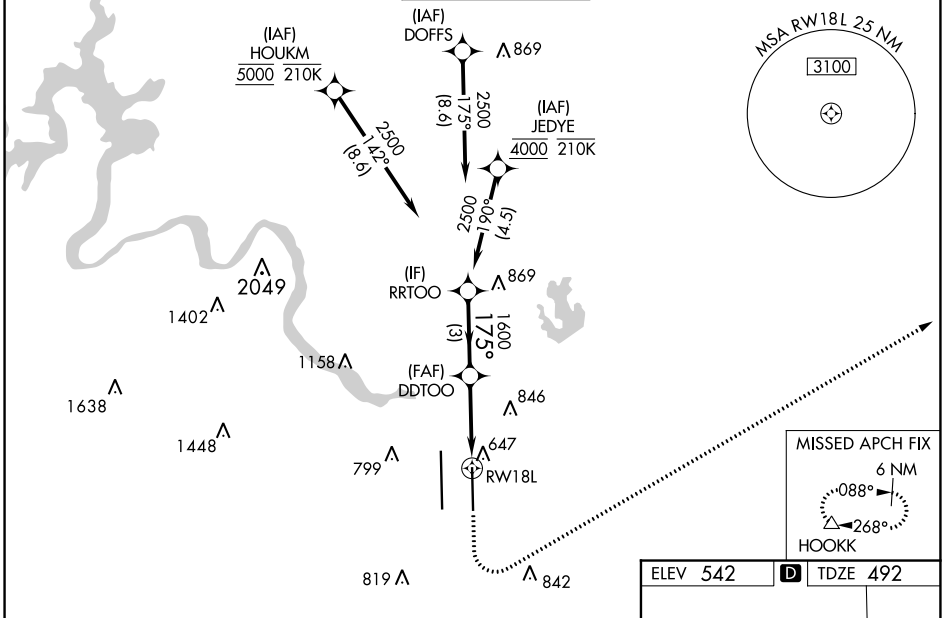
WAAS CH 62829 W18A	APP CRS 175°	Rwy Idg TDZE 492 Apt Elev 542	9000
--	------------------------	---	-------------

RNAV (GPS) Y RWY 18L

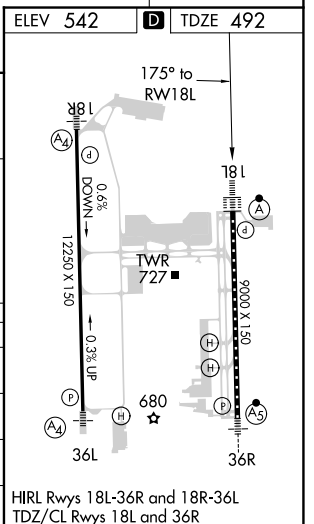
AUSTIN-BERGSTROM INTL (AUS)

RNP APCH-GPS.		ALSF-2 	MISSED APPROACH: Climb to 1000 then climbing left turn to 3000 direct HOOKK and hold.
<p>⚠ Simultaneous approach authorized. LNAV procedure NA during simultaneous operations. Use of FD or AP required during simultaneous operations. For uncompensated Baro-VNAV systems, LNAV/VNAV NA below -5°C or above 54°C. For inop ALS, increase LPV Cat E visibility to RVR 4000, LNAV/VNAV visibility all Cats to RVR 6000, and LNAV visibility Cats C, D, and E to RVR 6000.</p>			

D-ATIS 124.4	AUSTIN APP CON 127.225 317.65 (EAST) 120.875 270.25 (SOUTH) 119.0 370.85 (WEST)	AUSTIN TOWER 121.0 281.5	GND CON 121.9 348.6	CLNC DEL 125.5 263.0	CPDLC
------------------------	---	------------------------------------	-------------------------------	--------------------------------	-------



RRTOO VGSi and RNAV glidepath not coincident (VGSi Angle 3.00/TCH 74). GP 3.00° TCH 61	2500	175°	1600	1000	3000	HOOKK
	3 NM 2.2 NM 1.1 NM		DDTOO 1600 1.1 NM to RWY 18L			
CATEGORY	A	B	C	D	E	
LPV DA	692/18		200 (200-½)			
LNAV/VNAV DA	906/40		414 (400-¾)			
LNAV MDA	900/24	408 (400-½)	900/40		408 (400-¾)	
CIRCLING	1040-1 498 (500-1)	1120-1 578 (600-1)	1200-1¾ 658 (700-1¾)	1200-2 658 (700-2)	1520-3 978 (1000-3)	



SC-3, 14 JUL 2022 to 11 AUG 2022

SC-3, 14 JUL 2022 to 11 AUG 2022