

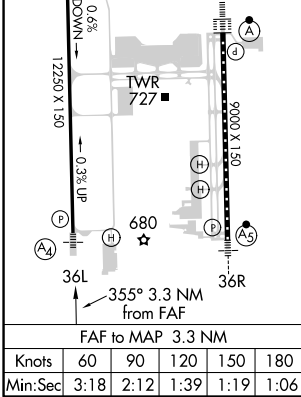
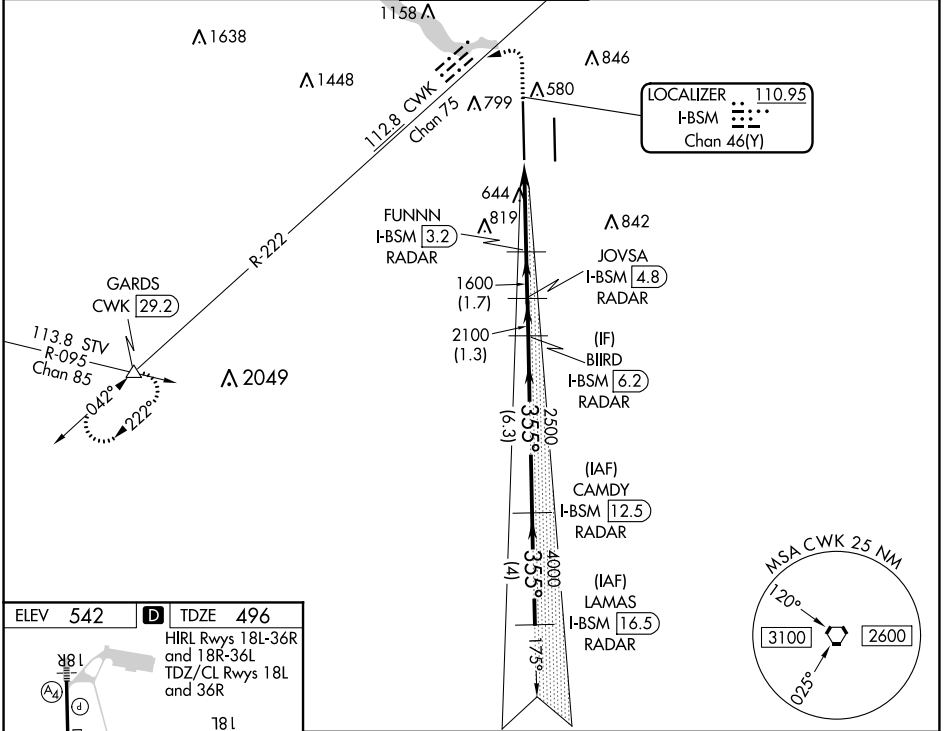
LOC/DME I-BSM 110.95 Chan 46(Y)	APP CRS 355°	Rwy Idg 12250 TDZE 496 Apt Elev 542
-----------------------------------------------------	------------------------	----------------------------------------------------------------

ILS or LOC RWY 36L

AUSTIN-BERGSTROM INTL (AUS)

DME or RADAR required.		MALS 	MISSED APPROACH: Climb to 1000 then climbing left turn to 3500 on heading 250° and CWK VORTAC R-222 to GARDS INT/CWK 29.2 DME and hold.		
Simultaneous approach authorized. For inop ALS, increase S-LOC 36L Cats C/D/E visibility to RVR 6000. Inop table does not apply to S-ILS 36L all Cats.					

D-ATIS 124.4	AUSTIN APP CON 127.225 317.65 120.875 270.25 (SOUTH) 119.0 370.85 (WEST)	AUSTIN TOWER 121.0 281.5	GND CON 121.9 348.6	CLNC DEL 125.5 263.0	CPDLC
------------------------	--------------------------------------------------------------------------------------------------------	------------------------------------	-------------------------------	--------------------------------	-------



ELEV 542	D TDZE 496	HIRL Rwy 18L-36R and 18R-36L TDZ/CL Rwy 18L and 36R				
1000	3500	CWK R-222	GARDS	VGSi and ILS glidepath not coincident (VGSi Angle 3.00/TCH 60).		
hdg 250°				BIIRD I-BSM [6.2] RADAR	LAMAS I-BSM [16.5] RADAR	
		I-BSM DME ANTENNA	FUNNN I-BSM [3.2] RADAR	JOVSA I-BSM [4.8] RADAR	CAMDY I-BSM [12.5] RADAR	
		I-BSM [0.2]	I-BSM [0.9]	1600	2100	
				2500	3500	
				4000	5000	
					GS 3.00° TCH 54	
		1.1 NM	2.2 NM	1.7 NM	1.3 NM	
				6.3 NM	4 NM	
CATEGORY	A	B	C	D	E	
S-ILS 36L	696/40 200 (200-¾)					
S-LOC 36L	900/40	404 (400-¾)	900/50 404 (400-1)			

SC-3, 14 JUL 2022 to 11 AUG 2022

SC-3, 14 JUL 2022 to 11 AUG 2022