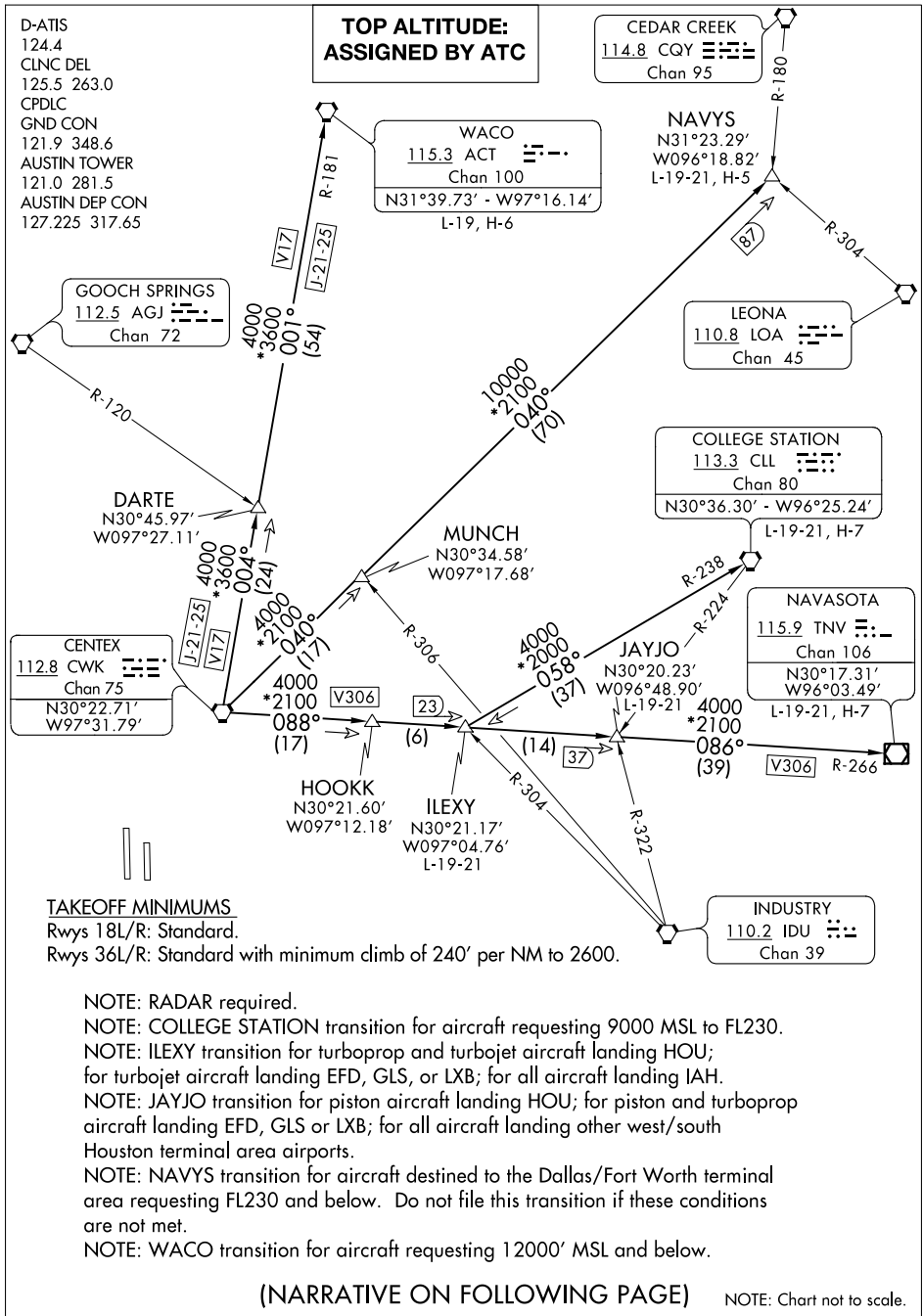


CENTEX SEVEN DEPARTURE

AL-556 (FAA)

AUSTIN-BERGSTROM INTL (AUS)

AUSTIN, TEXAS



SC-3, 14 JUL 2022 to 11 AUG 2022

SC-3, 14 JUL 2022 to 11 AUG 2022

D-ATIS
124.4
CLNC DEL
125.5 263.0
CPDLC
GND CON
121.9 348.6
AUSTIN TOWER
121.0 281.5
AUSTIN DEP CON
127.225 317.65

**TOP ALTITUDE:
ASSIGNED BY ATC**

CEDAR CREEK
114.8 CQY
Chan 95

WACO
115.3 ACT
Chan 100
N31°39.73' - W97°16.14'
L-19, H-6

NAVYS
N31°23.29'
W096°18.82'
L-19-21, H-5

GOOCH SPRINGS
112.5 AGJ
Chan 72

LEONA
110.8 LOA
Chan 45

COLLEGE STATION
113.3 CLL
Chan 80
N30°36.30' - W96°25.24'
L-19-21, H-7

CENTEX
112.8 CWK
Chan 75
N30°22.71'
W97°31.79'

NAVASOTA
115.9 TNV
Chan 106
N30°17.31'
W96°03.49'
L-19-21, H-7

HOOKK
N30°21.60'
W097°12.18'

IILEXY
N30°21.17'
W097°04.76'
L-19-21

INDUSTRY
110.2 IDU
Chan 39

TAKEOFF MINIMUMS

Rwys 18L/R: Standard.

Rwys 36L/R: Standard with minimum climb of 240' per NM to 2600.

NOTE: RADAR required.

NOTE: COLLEGE STATION transition for aircraft requesting 9000 MSL to FL230.

NOTE: IILEXY transition for turboprop and turbojet aircraft landing HOU; for turbojet aircraft landing EFD, GLS, or LXB; for all aircraft landing IAH.

NOTE: JAYJO transition for piston aircraft landing HOU; for piston and turboprop aircraft landing EFD, GLS or LXB; for all aircraft landing other west/south Houston terminal area airports.

NOTE: NAVYS transition for aircraft destined to the Dallas/Fort Worth terminal area requesting FL230 and below. Do not file this transition if these conditions are not met.

NOTE: WACO transition for aircraft requesting 12000' MSL and below.

(NARRATIVE ON FOLLOWING PAGE)

NOTE: Chart not to scale.