

APP CRS <b>303°</b>	Rwy Idg <b>10996</b>
	TDZE <b>2643</b>
	Apt Elev <b>2643</b>

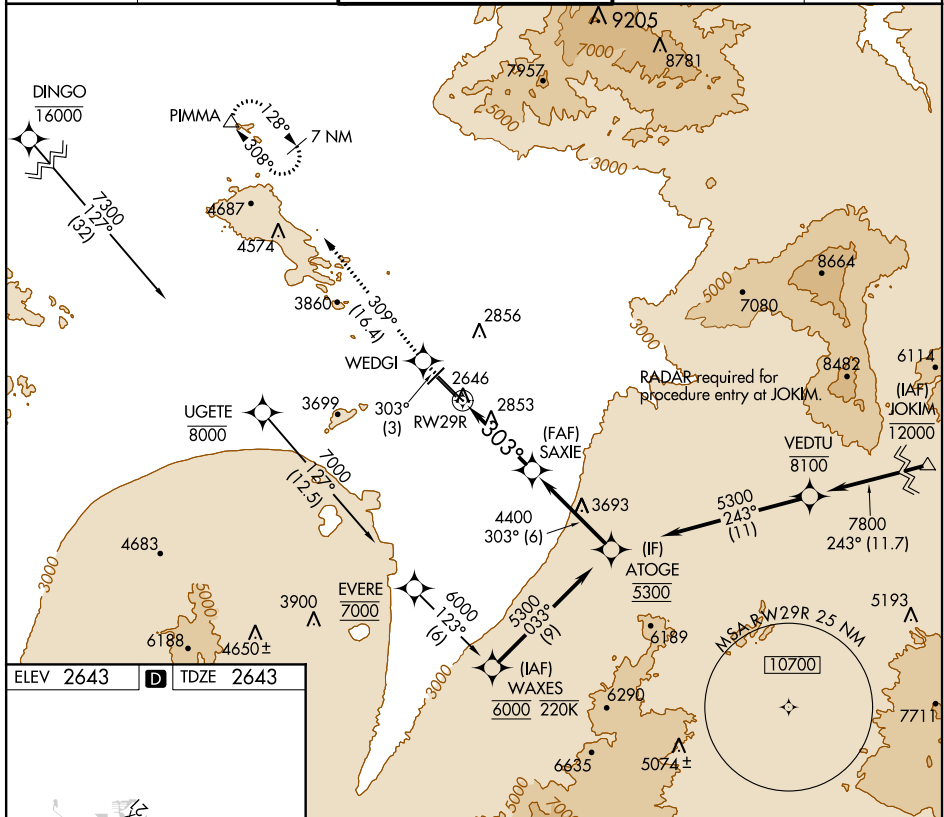
# RNAV (RNP) Y RWY 29R

TUCSON INTL (TUS)

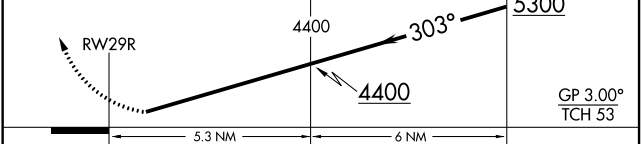
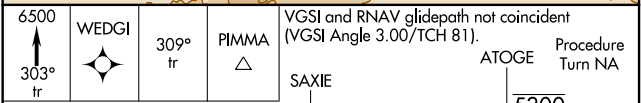
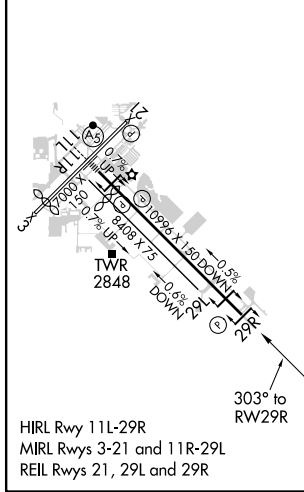
**NA** When VGSI inop, procedure NA at night. GPS required. For uncompensated Baro-VNAV systems, procedure NA below -5°C (23°F) or above 43°C (110°F). Rwy 29R helicopter visibility reduction below ¼ SM NA.

**MISSED APPROACH:** Climb to 6500 on 303° track to WEDGI 309° track to PIMMA and hold.

ATIS <b>123.8 279.65</b>	TUCSON APP CON <b>119.4 318.1</b>	TUCSON TOWER <b>118.3 257.8</b>	GND CON <b>124.4 348.6</b>	CLNC DEL <b>126.65 326.2</b>
-----------------------------	--------------------------------------	------------------------------------	-------------------------------	---------------------------------



ELEV 2643	<b>D</b>	TDZE 2643
-----------	----------	-----------



CATEGORY	A	B	C	D
RNP 0.30 DA	3137-1½ 494 (500-1½)			

**AUTHORIZATION REQUIRED**

SW-4, 14 JUL 2022 to 11 AUG 2022

SW-4, 14 JUL 2022 to 11 AUG 2022