

APP CRS 303°	Rwy Idg 6998
	TDZE 2629
	Apt Elev 2643

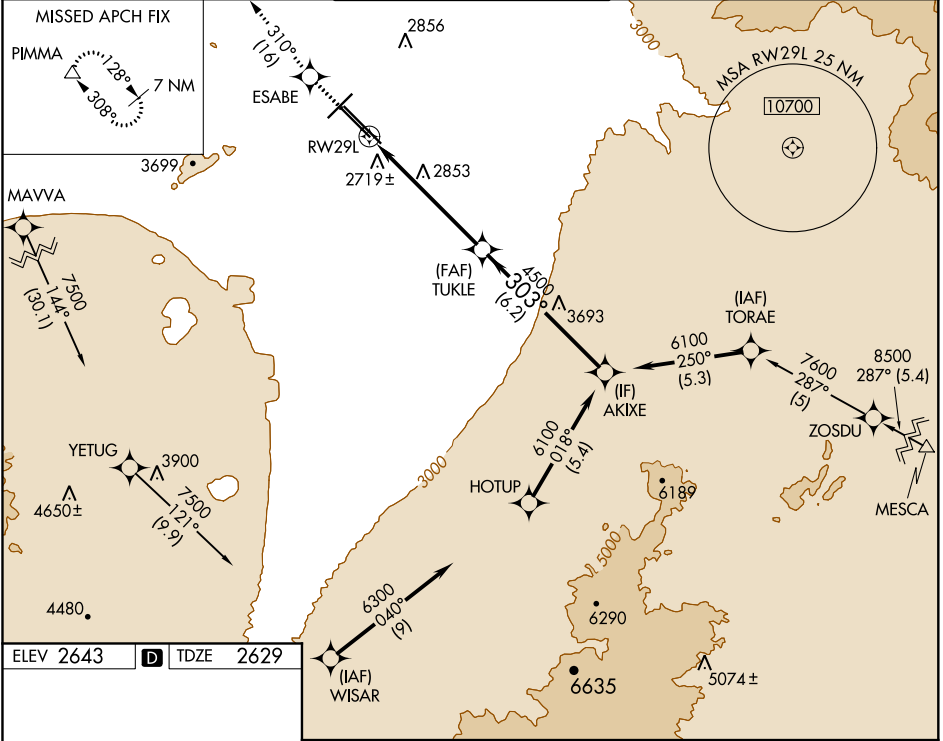
RNAV (GPS) RWY 29L

TUCSON INTL (TUS)

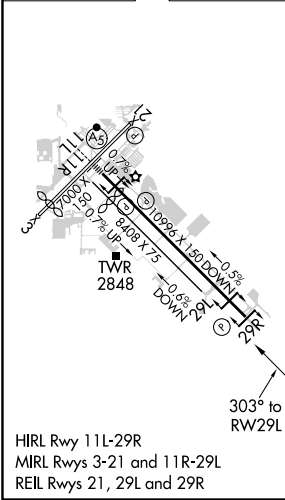
▽ For uncompensated Baro-VNAV systems, LNAV/VNAV NA below -20°C (-4°F) or above 27°C (80°F). DME/DME RNP-0.3 NA. Helicopter visibility reduction below ¾ SM NA.

MISSED APPROACH: Climb to 6500 direct ESABE then climbing right turn on track 310° to PIMMA and hold.

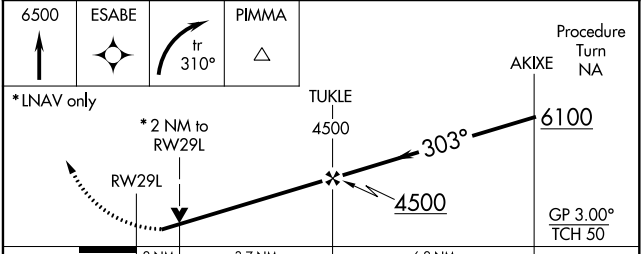
ATIS 123.8 279.65	TUCSON APP CON 119.4 318.1	TUCSON TOWER 118.3 257.8	GND CON 124.4 348.6	CLNC DEL 126.65 326.2
-----------------------------	--------------------------------------	------------------------------------	-------------------------------	---------------------------------



ELEV 2643	D	TDZE 2629
-----------	----------	-----------



HIRL Rwy 11L-29R
MIRL Rws 3-21 and 11R-29L
REIL Rws 21, 29L and 29R



CATEGORY	A	B	C	D
LNAV/ VNAV	3040-1 $\frac{3}{8}$ 411 (400-1 $\frac{3}{8}$)			
LNAV MDA	3320-1	691 (700-1)	3320-2	691 (700-2)
CIRCLING	3320-1	677 (700-1)	3320-2 677 (700-2)	3660-3 1017 (1100-3)

SW-4, 14 JUL 2022 to 11 AUG 2022

SW-4, 14 JUL 2022 to 11 AUG 2022