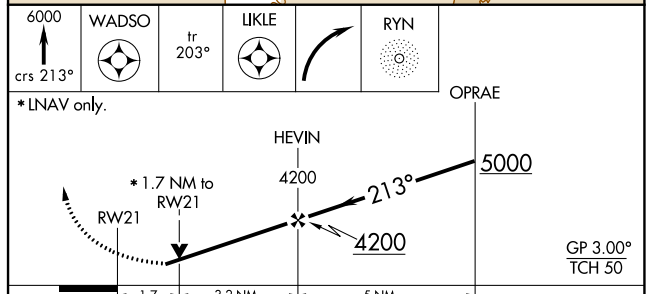
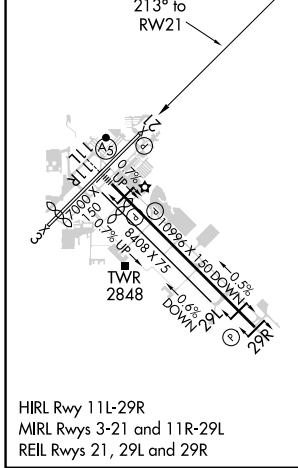
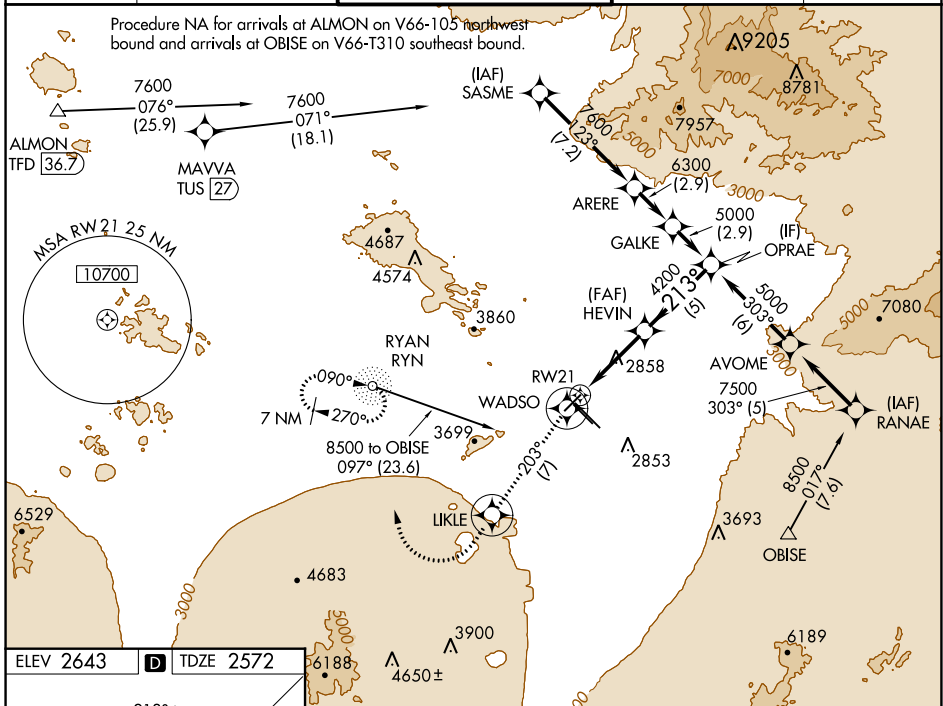


APP CRS <b>213°</b>	Rwy Idg TDZE Apt Elev	<b>6000</b> <b>2572</b> <b>2643</b>
------------------------	-----------------------------	---

# RNAV (GPS) RWY 21

TUCSON INTL (TUS)

RNP APCH.		MISSED APPROACH: Climb to 6000 on course 213° to WADSO and track 203° to LIKLE and right turn direct RYN NDB and hold.				
<p>Rwy 21 helicopter visibility reduction below 3/4 SM NA. For uncompensated Baro-VNAV systems, LNAV/VNAV NA below -20°C or above 54°C.</p>		ATIS <b>123.8 279.65</b>	TUCSON APP CON <b>119.4 318.1</b>	TUCSON TOWER <b>118.3 257.8</b>	GND CON <b>124.4 348.6</b>	CLNC DEL <b>126.65 326.2</b>



CATEGORY	A	B	C	D
LNAV/VNAV DA	3145-2		573 (600-2)	
LNAV MDA	3160-1	588 (600-1)	3160-1½ 588 (600-1½)	3160-1¾ 588 (600-1¾)
CIRCLING	3160-1 517 (600-1)	3220-1 577 (600-1)	3220-1½ 577 (600-1½)	3660-3 1017 (1100-3)

SW-4, 14 JUL 2022 to 11 AUG 2022

SW-4, 14 JUL 2022 to 11 AUG 2022