

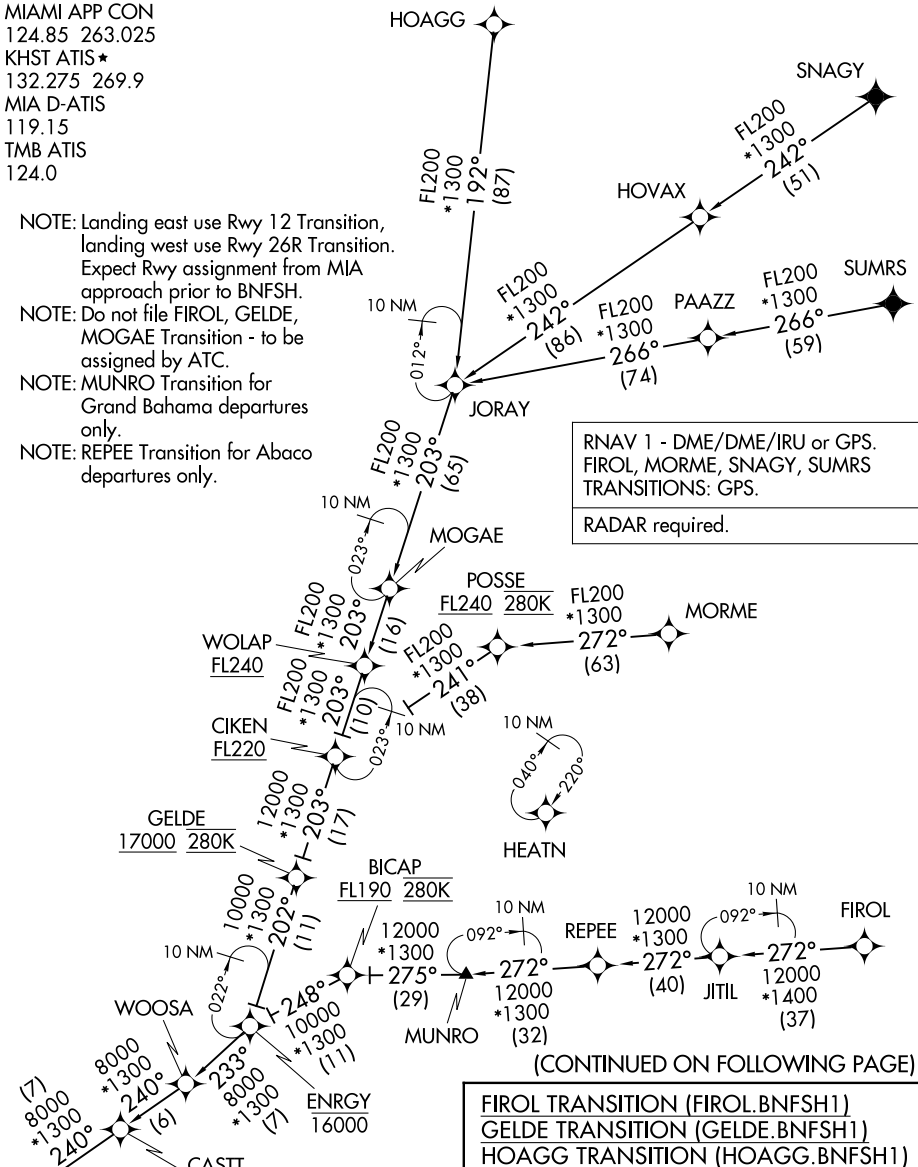
# BNFSH ONE ARRIVAL (RNAV) Transition Routes

MIAMI, FLORIDA

MIAMI APP CON  
 124.85 263.025  
 KHST ATIS\*  
 132.275 269.9  
 MIA D-ATIS  
 119.15  
 TMB ATIS  
 124.0

- NOTE: Landing east use Rwy 12 Transition, landing west use Rwy 26R Transition. Expect Rwy assignment from MIA approach prior to BNFSH.
- NOTE: Do not file FIROL, GELDE, MOGAE Transition - to be assigned by ATC.
- NOTE: MUNRO Transition for Grand Bahama departures only.
- NOTE: REPEE Transition for Abaco departures only.

RNAV 1 - DME/DME/IRU or GPS.  
 FIROL, MORME, SNAGY, SUMRS  
 TRANSITIONS: GPS.  
 RADAR required.



(CONTINUED ON FOLLOWING PAGE)

- FIROL TRANSITION (FIROL.BNFSH1)
- GELDE TRANSITION (GELDE.BNFSH1)
- HOAGG TRANSITION (HOAGG.BNFSH1)
- MOGAE TRANSITION (MOGAE.BNFSH1)
- MORME TRANSITION (MORME.BNFSH1)
- MUNRO TRANSITION (MUNRO.BNFSH1)
- REPEE TRANSITION (REPEE.BNFSH1)
- SNAGY TRANSITION (SNAGY.BNFSH1)
- SUMRS TRANSITION (SUMRS.BNFSH1)

BNFSH  
 11000  
 See following page for arrival routes.

NOTE: Chart not to scale.

SE-3, 14 JUL 2022 to 11 AUG 2022

SE-3, 14 JUL 2022 to 11 AUG 2022

# BNFSH ONE ARRIVAL (RNAV) Transition Routes

MIAMI, FLORIDA