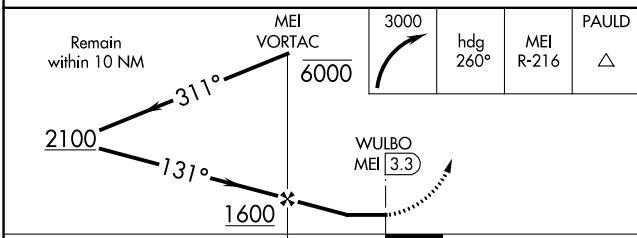
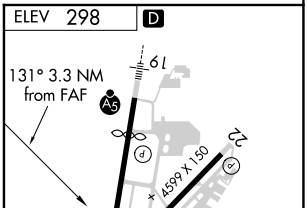
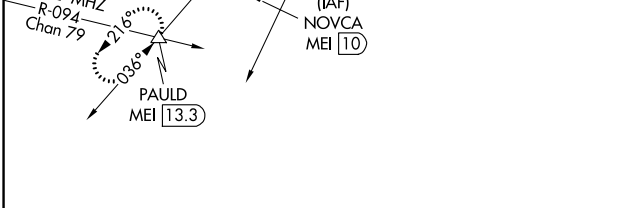
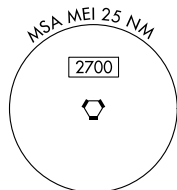
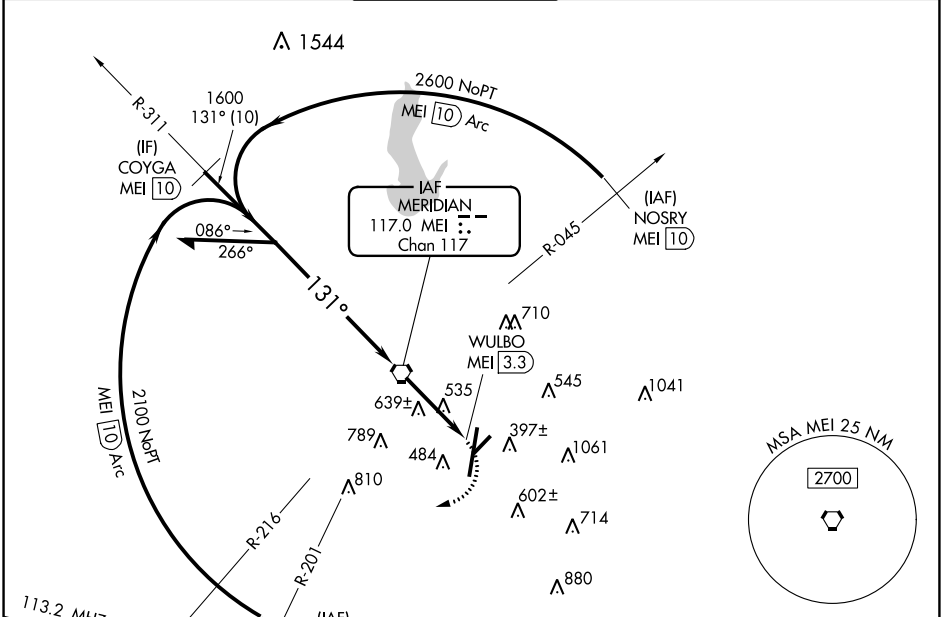


VORTAC MEI 117.0 Chan 117	APP CRS 131°	Rwy Idg TDZE Apt Elev	N/A N/A 298
---	------------------------	-----------------------------	--

⚠ Circling to Rwy 22 NA at night. Circling NA southeast of Rws 1 and 22.
When local altimeter setting not received, use Hattiesburg/Laurel Rgnl altimeter setting and increase all MDA 140 feet, increase Cat C visibility ½ mile and Cat D visibility ¼ mile. Procedure turn NA for Cat E.

MISSED APPROACH: Climbing right turn to 3000 on heading 260° and MEI R-216 to PAULD INT/MEI 13.3 DME and hold.

ATIS 126.475 291.675	MERIDIAN APP CON ★ 120.5 269.325	KEY TOWER ★ 133.975 (CTAF) 257.8	GND CON 121.9 348.6	CLNC DEL 121.9 348.6	UNICOM 122.95
--------------------------------	--	--	-------------------------------	--------------------------------	-------------------------



CATEGORY	A	B	C	D	E	FAF to MAP 3.3 NM					
CIRCLING	900-1	602 (700-1)	960-1¾ 662 (700-1¾)	1120-2¾ 822 (900-2¾)	1120-3 822 (900-3)	Knots	60	90	120	150	180
						Min:Sec	3:18	2:12	1:39	1:19	1:06

SC-4, 14 JUL 2022 to 11 AUG 2022

SC-4, 14 JUL 2022 to 11 AUG 2022