

# WILDCAT FIVE DEPARTURE

AL-213 (FAA)

CHARLES B WHEELER DOWNTOWN (MKC)  
KANSAS CITY, MISSOURI

ATIS  
120.75  
CLNC DEL  
121.9

ST JOSEPH  
115.5 STJ ---  
Chan 102

KANSAS CITY  
113.25 MCI ---  
Chan 79(Y)  
N39°17.12' W94°44.22'

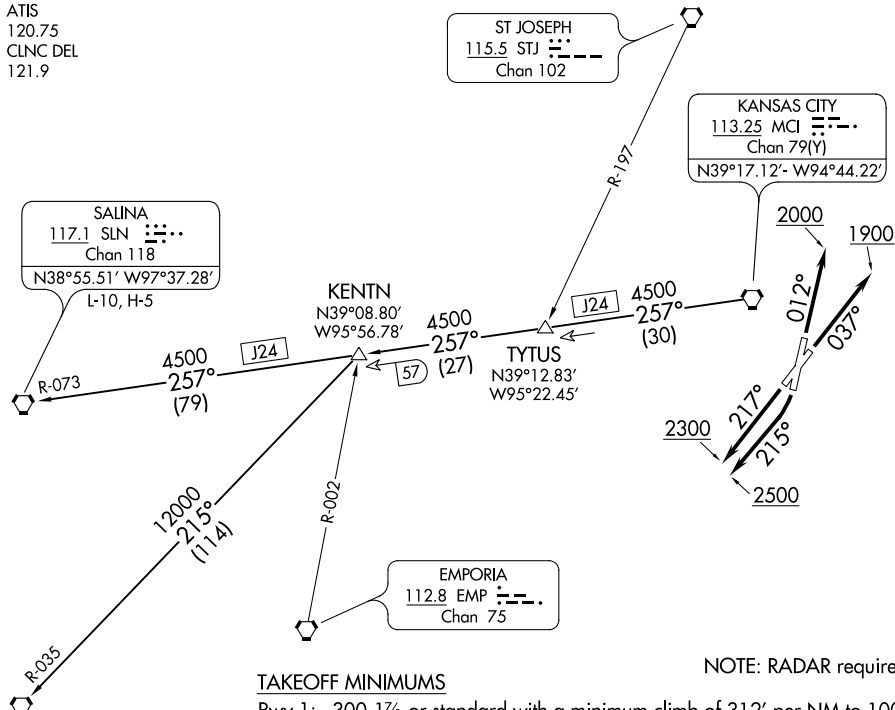
SALINA  
117.1 SLN ---  
Chan 118  
N38°55.51' W97°37.28'  
L-10, H-5

KENTN  
N39°08.80'  
W95°56.78'

TYTUS  
N39°12.83'  
W95°22.45'

EMPORIA  
112.8 EMP ---  
Chan 75

WICHITA  
113.8 ICT ---  
Chan 85  
N37°44.72' W97°35.03'  
L-10-15, H-5



### TAKEOFF MINIMUMS

- Rwy 1: 300-1 $\frac{1}{8}$  or standard with a minimum climb of 312' per NM to 1000.
- Rwy 3: Standard
- Rwy 19: Standard with minimum climb of 465' per NM to 2500.
- Rwy 21: 200-1 $\frac{1}{8}$  or standard with minimum climb of 260' per NM to 1000.

NOTE: RADAR required.

NOTE: Chart not to scale.

### DEPARTURE ROUTE DESCRIPTION

- TAKEOFF RUNWAY 1:** Climb heading 012° to 2000, thence. . .
- TAKEOFF RUNWAY 3:** Climb heading 037° to 1900, thence. . .
- TAKEOFF RUNWAY 19:** Climbing right turn heading 215° to 2500, thence. . .
- TAKEOFF RUNWAY 21:** Climb heading 217° to 2300, thence. . .

. . . climb on assigned heading for RADAR vectors to appropriate route. Expect filed altitude 10 minutes after departure.

**KENTN TRANSITION (WLDCT5.KENTN):** From over MCI VORTAC on MCI R-257 to KENTN.

**SALINA TRANSITION (WLDCT5.SLN):** From over MCI VORTAC on MCI R-257 and SLN R-073 to SLN VORTAC.

**WICHITA TRANSITION (WLDCT5.ICT):** From over MCI VORTAC on MCI R-257 to KENTN, then on ICT R-035 to ICT VORTAC.