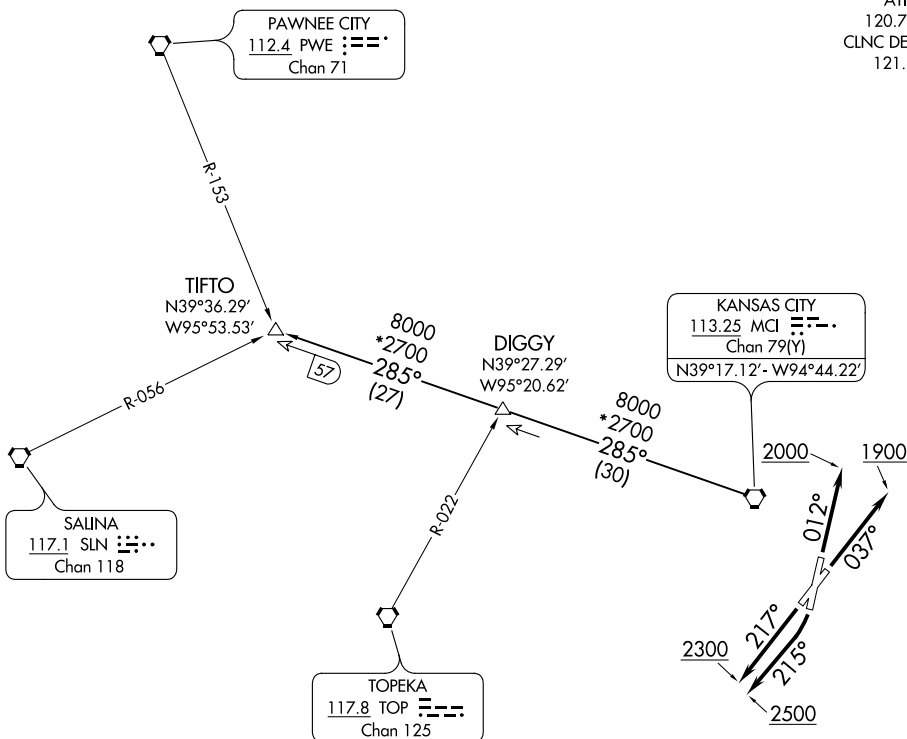


ATIS
120.75
CLNC DEL
121.9



NOTE: RADAR required.

TAKEOFF MINIMUMS

Rwy 1: 300-1½ or standard with a minimum climb of 312' per NM to 1000.

Rwy 3: Standard.

Rwy 19: Standard with minimum climb of 465' per NM to 2500.

Rwy 21: 200-1½ or standard with minimum climb of 260' per NM to 1000.

NOTE: Chart not to scale



DEPARTURE ROUTE DESCRIPTION

TAKEOFF RUNWAY 1: Climb heading 012° to 2000, thence. . .

TAKEOFF RUNWAY 3: Climb heading 037° to 1900, thence. . .

TAKEOFF RUNWAY 19: Climbing right turn heading 215° to 2500, thence. . .

TAKEOFF RUNWAY 21: Climb heading 217° to 2300, thence. . .

. . . climb on assigned heading for RADAR vectors to appropriate route. Expect filed altitude 10 minutes after departure.

TIFTO TRANSITION (TIFTO6.TIFTO): From over MCI VORTAC on MCI R-285 to TIFTO.