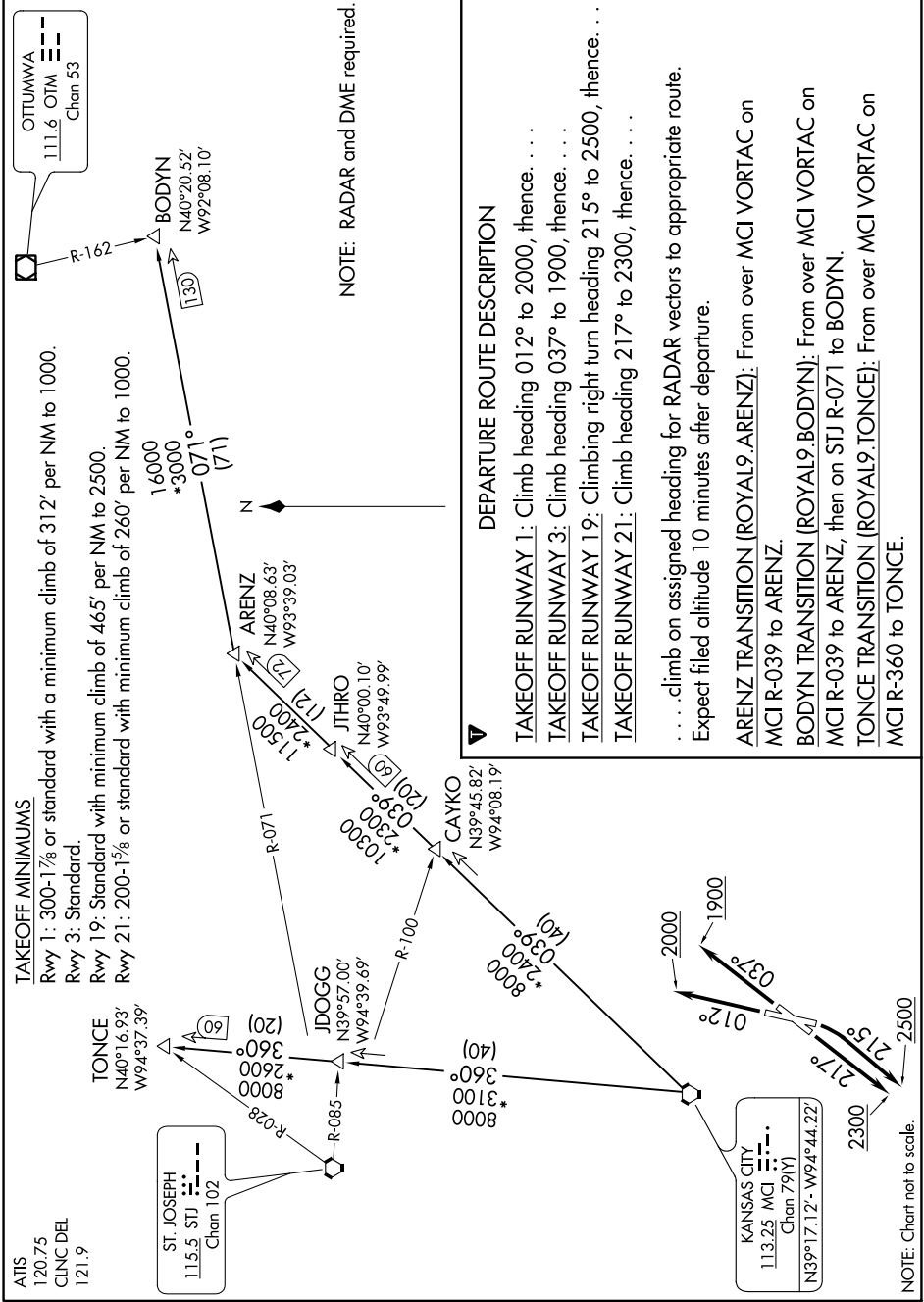


ROYAL NINE DEPARTURE

NC-3, 14 JUL 2022 to 11 AUG 2022



TAKEOFF MINIMUMS
 Rwy 1: 300-1% or standard with a minimum climb of 312' per NM to 1000.
 Rwy 3: Standard.
 Rwy 19: Standard with minimum climb of 465' per NM to 2500.
 Rwy 21: 200-1% or standard with minimum climb of 260' per NM to 1000.

ATIS
 120.75
 CLNC DEL
 121.9

ST. JOSEPH
 115.5 STJ
 Chan 102

KANSAS CITY
 113.25 MCI
 Chan 79(Y)
 N39°17.12' - W94°44.22'

NOTE: RADAR and DME required.

DEPARTURE ROUTE DESCRIPTION

- TAKEOFF RUNWAY 1:** Climb heading 012° to 2000, thence. . .
 - TAKEOFF RUNWAY 3:** Climb heading 037° to 1900, thence. . .
 - TAKEOFF RUNWAY 19:** Climbing right turn heading 215° to 2500, thence. . .
 - TAKEOFF RUNWAY 21:** Climb heading 217° to 2300, thence. . .
- . . . climb on assigned heading for RADAR vectors to appropriate route.
 Expect filed altitude 10 minutes after departure.
- ARENZ TRANSITION (ROYAL9.ARENZ):** From over MCI VORTAC on MCI R-039 to ARENZ.
BODYN TRANSITION (ROYAL9.BODYN): From over MCI VORTAC on MCI R-039 to ARENZ, then on STJ R-071 to BODYN.
TONCE TRANSITION (ROYAL9.TONCE): From over MCI VORTAC on MCI R-360 to TONCE.

NOTE: Chart not to scale.

NC-3, 14 JUL 2022 to 11 AUG 2022