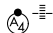


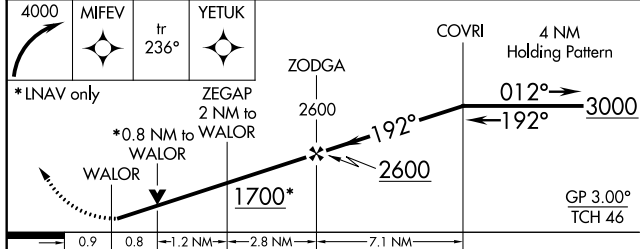
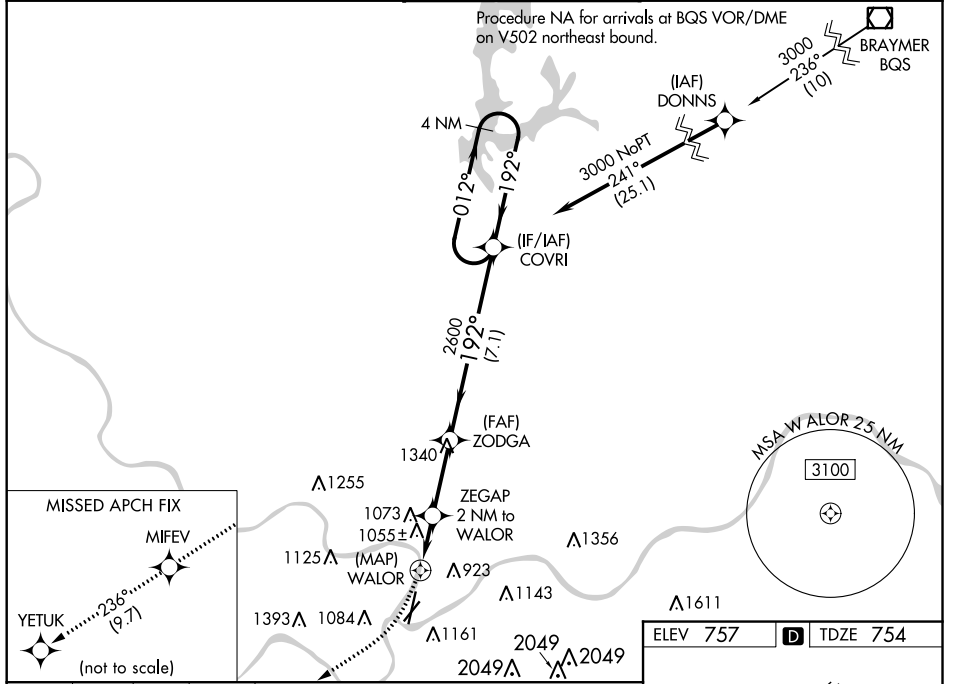
WAAS CH <b>90320</b> <b>W19A</b>	APP CRS <b>192°</b>	Rwy Idg TDZE Apt Elev	<b>6525</b> <b>754</b> <b>757</b>
--	------------------------	-----------------------------	---

# RNAV (GPS) RWY 19

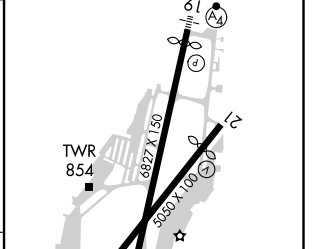
CHARLES B WHEELER DOWNTOWN (MKC)

<p><b>⚠</b> For uncompensated Baro-VNAV systems, LNAV/VNAV NA below -6°C (22°F) or above 54°C (130°F). DME/DME RNP-0.3 NA. Circling Cat C/D NA to Rwy 3. Rwy 19 helicopter visibility reduction below RVR 4000 NA. Circling NA to Rwy 21. For inop ALS, increase LNAV Cat A/B visibility to RVR 6000 and Cat C to 1 3/4 SM. Inop table does not apply to LNAV Cat D.</p>	<p>MALSF  </p>	<p>MISSED APPROACH: Climbing right turn to 4000 direct MIFEV and on track 236° to YETUK and hold.</p>
--	---	---

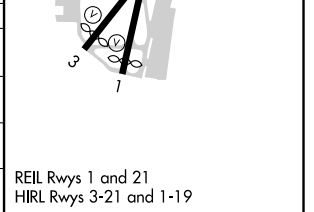
ATIS <b>120.75</b>	KANSAS CITY APP CON <b>118.4 307.35</b>	DOWNTOWN TOWER <b>133.3 233.7</b>	CLNC DEL <b>121.9</b>	GND CON <b>121.9</b>
-----------------------	--	--------------------------------------	--------------------------	-------------------------



ELEV 757	<b>D</b> TDZE 754
----------	-------------------



CATEGORY	A	B	C	D
LPV DA		1157/60	403 (400-1 1/4)	
LNAV/VNAV DA		1300-1 5/8	546 (600-1 5/8)	
LNAV MDA	1340/40	586 (600-3/4)	1340-1 3/8 586 (600-1 3/8)	1640-2 1/2 886 (900-2 1/2)
<b>C</b> CIRCLING	1380-1 623 (700-1)	1400-1 643 (700-1)	1460-2 703 (800-2)	1640-3 883 (900-3)



# RNAV (GPS) RWY 19

NC-3, 14 JUL 2022 to 11 AUG 2022

NC-3, 14 JUL 2022 to 11 AUG 2022