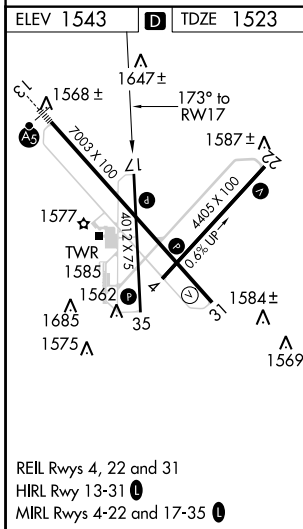
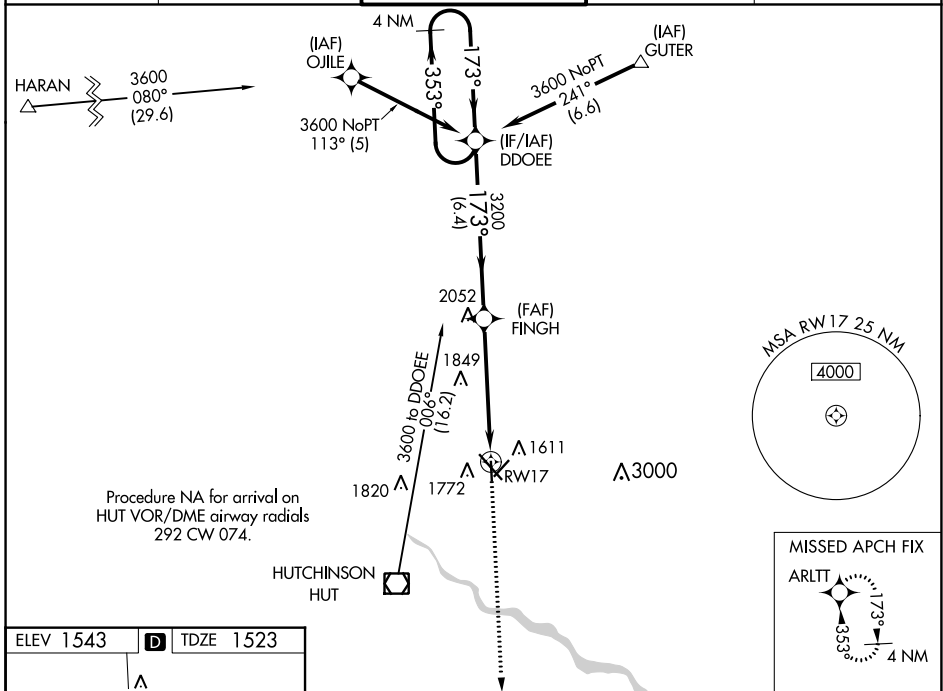


WAAS CH 81941 W17A	APP CRS 173°	Rwy Idg TDZE 1523 Apt Elev 1543	4012
--	------------------------	---	-------------

RNAV (GPS) RWY 17

HUTCHINSON RGNL (HUT)

<p>7 Circling to Rwy 22 NA at night. For uncompensated Baro-VNAV systems, LNAV/VNAV NA below -18°C (0°F) or above 54°C (130°F). DME/DME RNP-0.3 NA.</p>			<p>MISSED APPROACH: Climb to 3600 direct ARLTT and hold.</p>	
<p>ATIS 124.25</p>	<p>WICHITA APP CON 125.5 306.2</p>	<p>HUTCHINSON TOWER * 118.5 (CTAF) 363.0</p>	<p>GND CON 121.9</p>	<p>UNICOM 122.95</p>



4 NM Holding Pattern DDOEE		3600	ARLTT	
3600 ← 353°		173° →		
GP 3.00° TCH 40		3200	*1.6 NM to RWY 17	
		3200		
		6.4 NM	3.5 NM	
		1.6 NM		
CATEGORY	A	B	C	D
LPV DA	1889-1 366 (400-1)		NA	
LNAV/VNAV DA	2078-1½ 555 (600-1½)		NA	
LNAV MDA	2060-1	537 (600-1)	2060-1½ 537 (600-1½)	NA
C CIRCLING	2080-1	537 (600-1)	2200-1¾ 657 (700-1¾)	NA

NC-2, 14 JUL 2022 to 11 AUG 2022

NC-2, 14 JUL 2022 to 11 AUG 2022