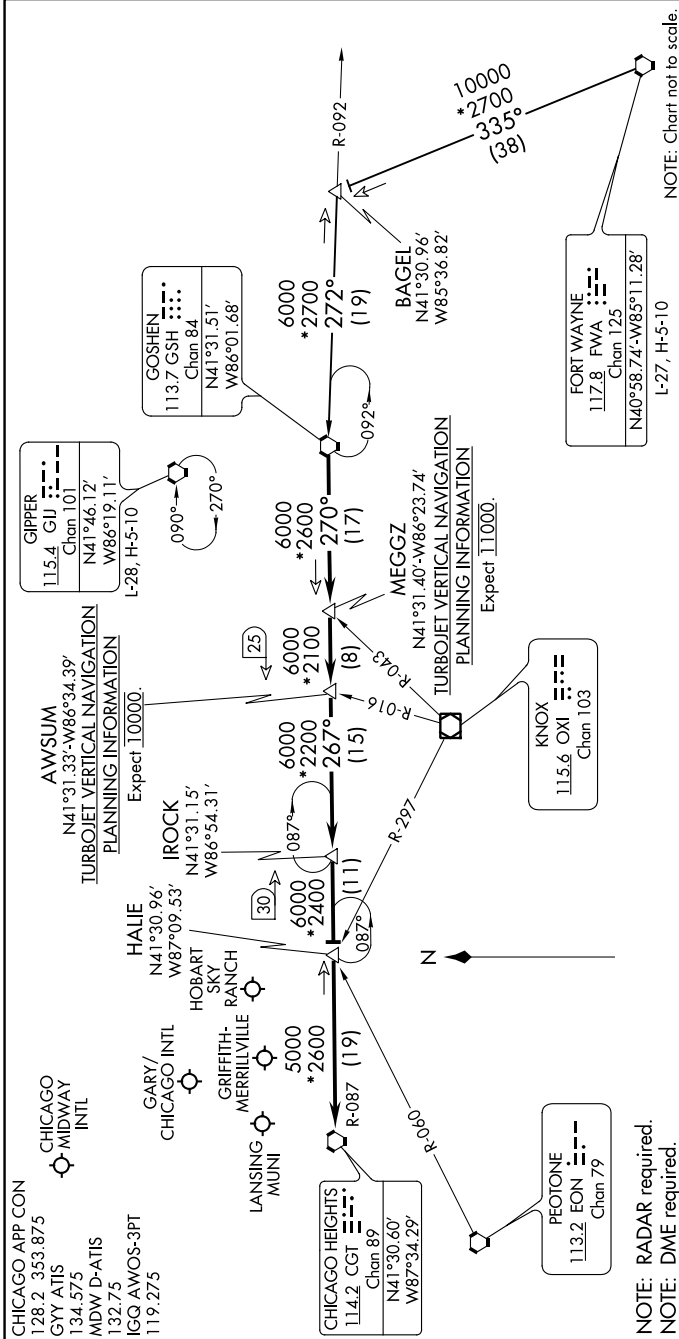


EC-3, 14 JUL 2022 to 11 AUG 2022



**ARRIVAL ROUTE DESCRIPTION**

**FORT WAYNE TRANSITION (FWA.GSH8):** From over FWA VORTAC on FWA R-335 to BAGEL then on GSH R-092 to GSH VORTAC. Thence....

**BAGEL TRANSITION (BAGEL.GSH8):** From over BAGEL GSH R-092 to GSH VORTAC. Thence....

....From over GSH VORTAC on GSH R-270 to MEGGZ, then on GSH R-270 to AWSUM, then on GSH R-270 and CGT R-087 to IROCK, then on CGT R-087 to HALIE, then on CGT R-087 to CGT VORTAC. Thence....

Expect RADAR vectors to final approach course.

EC-3, 14 JUL 2022 to 11 AUG 2022