

VORTAC BGS 117.2 Chan 119	APP CRS 359°	Rwy Idg 8802 TDZE 2563 Apt Elev 2573
---	------------------------	---

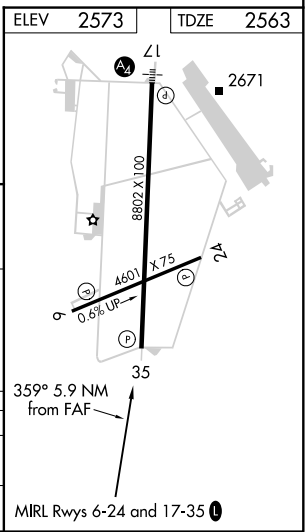
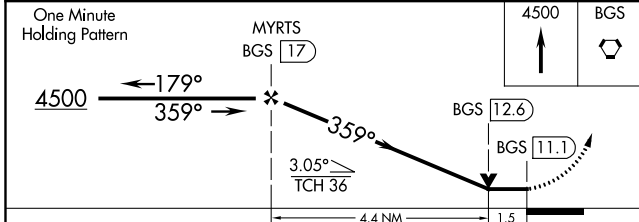
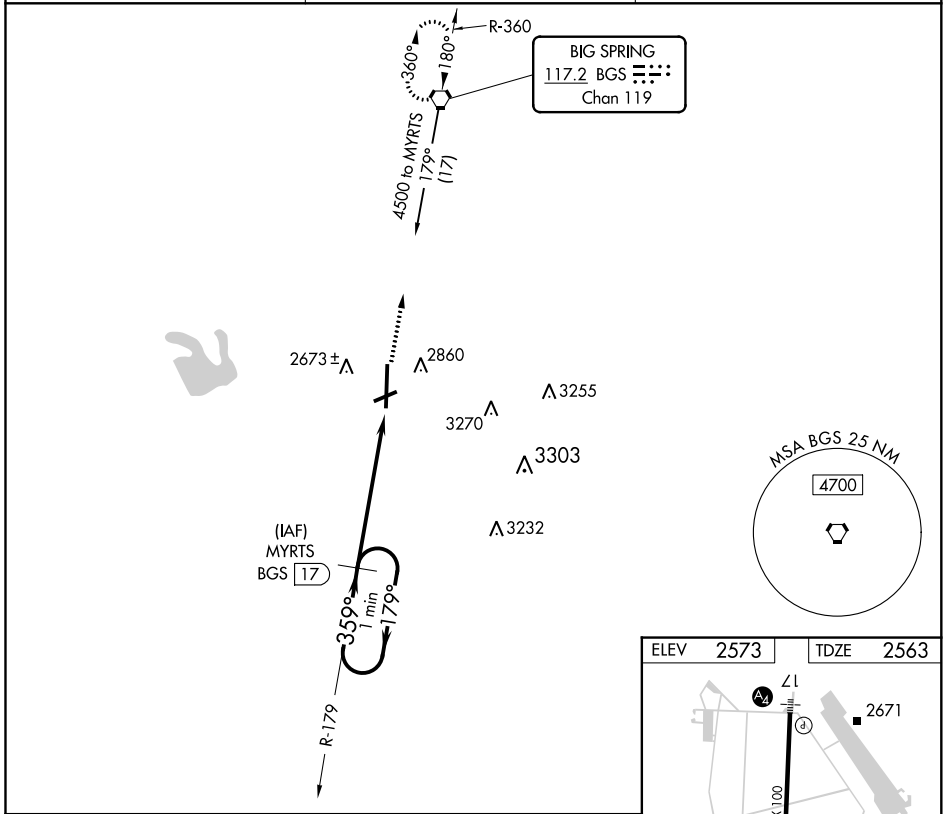
VOR/DME RWY 35

BIG SPRING McMAHON-WRINKLE (BPG)

▼ When VGS1 inoperative, Circling Rwy 6 NA at night. Circling NA east of Rwy 17-35.
 ▲ VDP NA when using Midland Intl Air and Space Port altimeter setting. When local altimeter setting not received, use Midland Intl Air and Space Port altimeter setting and increase all MDA 140 feet, increase S-35 Cats C and D and Circling Cats C and D visibility ¼ mile.

MISSED APPROACH: Climb to 4500 direct to BGS VORTAC and hold.

AWOS-3 118.025	FORT WORTH CENTER 133.7 350.2	UNICOM 122.8 (CTAF) 0
--------------------------	---	---------------------------------



CATEGORY	A	B	C	D
S-35	3080-1	517 (600-1)	3080-1½ 517 (600-1½)	3080-1¾ 517 (600-1¾)
☐ CIRCLING	3080-1	507 (600-1)	3080-1½ 507 (600-1½)	3140-2 567 (600-2)

SC-2, 14 JUL 2022 to 11 AUG 2022

SC-2, 14 JUL 2022 to 11 AUG 2022