

WAAS CH 86332 W06A	APP CRS 060°	Rwy Idg TDZE Apt Elev	4601 2563 2573
--	------------------------	-----------------------------	---

RNAV (GPS) RWY 6

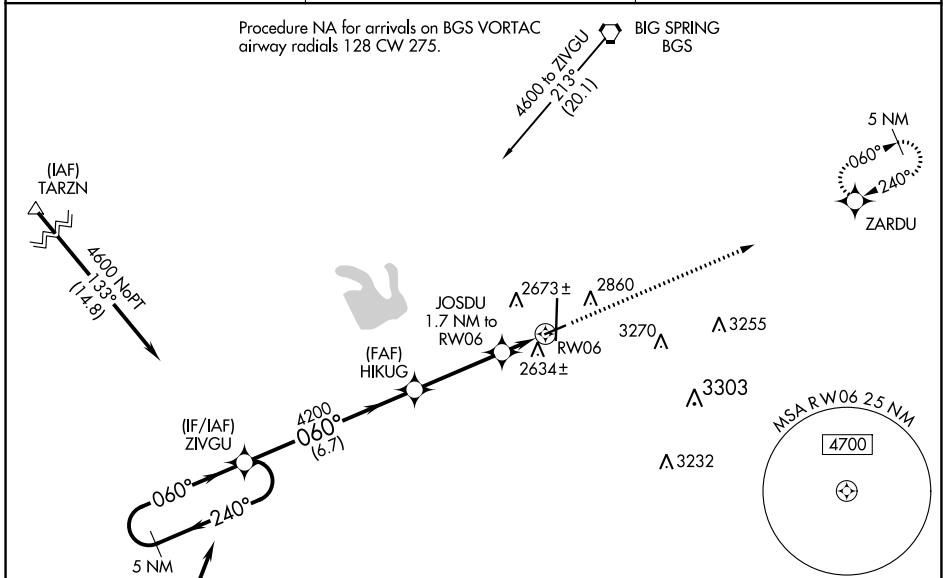
BIG SPRING McMAHON-WRINKLE (BPG)

RNP APCH.

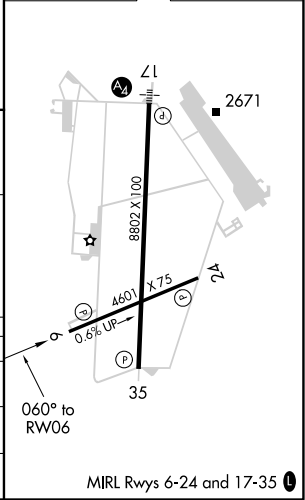
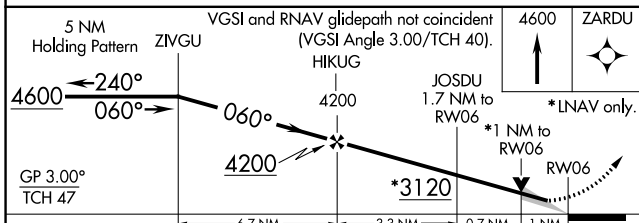
⚠ For uncompensated Baro-VNAV systems, LNAV/VNAV NA below -20°C or above 54°C.
⚠ When local altimeter setting not received, use Midland Intl Air and Space Port altimeter setting and increase all DA 130 feet, all MDA 140 feet, and increase LPV all Cats visibility 3/8 mile and LNAV/VNAV all Cats visibility 1/2 mile. Baro-VNAV and VDP NA with Midland Intl Air and Space Port altimeter setting.

MISSED APPROACH: Climb to 4600 direct ZARDU and hold.

AWOS-3 118.025	FORT WORTH CENTER 133.7 350.2	UNICOM 122.8 (CTAF) 0
--------------------------	---	---------------------------------



ELEV 2573	TDZE 2563
-----------	-----------



CATEGORY	A	B	C	D
LPV DA	2763-3/4	200 (200-3/4)		NA
LNAV/VNAV DA	2813-3/4	250 (300-3/4)		NA
LNAV MDA	2900-1	337 (400-1)		NA

SC-2, 14 JUL 2022 to 11 AUG 2022

SC-2, 14 JUL 2022 to 11 AUG 2022