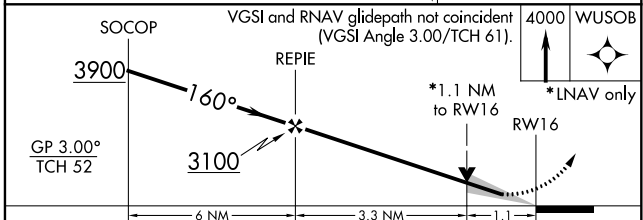
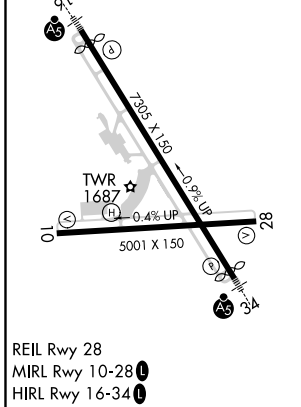
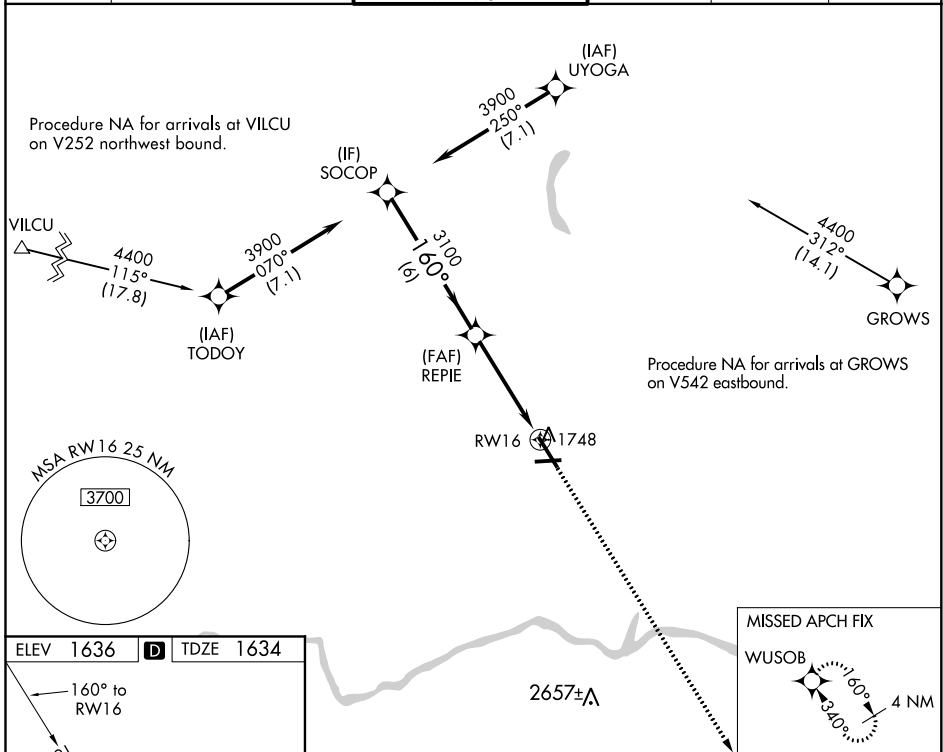


WAAS CH <b>66015</b> <b>W16A</b>	APP CRS <b>160°</b>	Rwy Idg <b>6905</b> TDZE <b>1634</b> Apt Elev <b>1636</b>
--	------------------------	---

# RNAV (GPS) RWY 16

GREATER BINGHAMTON/EDWIN A LINK FLD (BGM)

RNP APCH.		MALSR		MISSED APPROACH: Climb to 4000 direct WUSOB and hold.	
<p> For uncompensated Baro-VNAV systems, LNAV/VNAV NA below -21°C or above 54°C. For inop ALS, increase LNAV/VNAV all Cats visibility to RVR 5500.</p>					
ATIS <b>128.15</b>	BINGHAMTON APP CON * <b>118.6 257.625</b>	BINGHAMTON TOWER * <b>119.3 (CTAF) 239.25</b>	GND CON <b>121.9</b>	CLNC DEL <b>125.05</b>	UNICOM <b>122.95</b>



CATEGORY	A	B	C	D
LPV DA	1884/24 250 (300-1/2)			
LNAV/VNAV DA	1984/30 350 (400-3/4)			
LNAV MDA	2060/24	426 (500-1/2)	2060/40	426 (500-3/4)
<b>C</b> CIRCLING	2120-1	484 (500-1)	2120-1 1/2 484 (500-1 1/2)	2200-2 564 (600-2)

NE-2, 14 JUL 2022 to 11 AUG 2022

NE-2, 14 JUL 2022 to 11 AUG 2022