

WAAS CH 50240 W21A	APP CRS 176°	Rwy Idg TDZE Apt Elev	3000 12 12
--	------------------------	-----------------------------	---------------------------------------

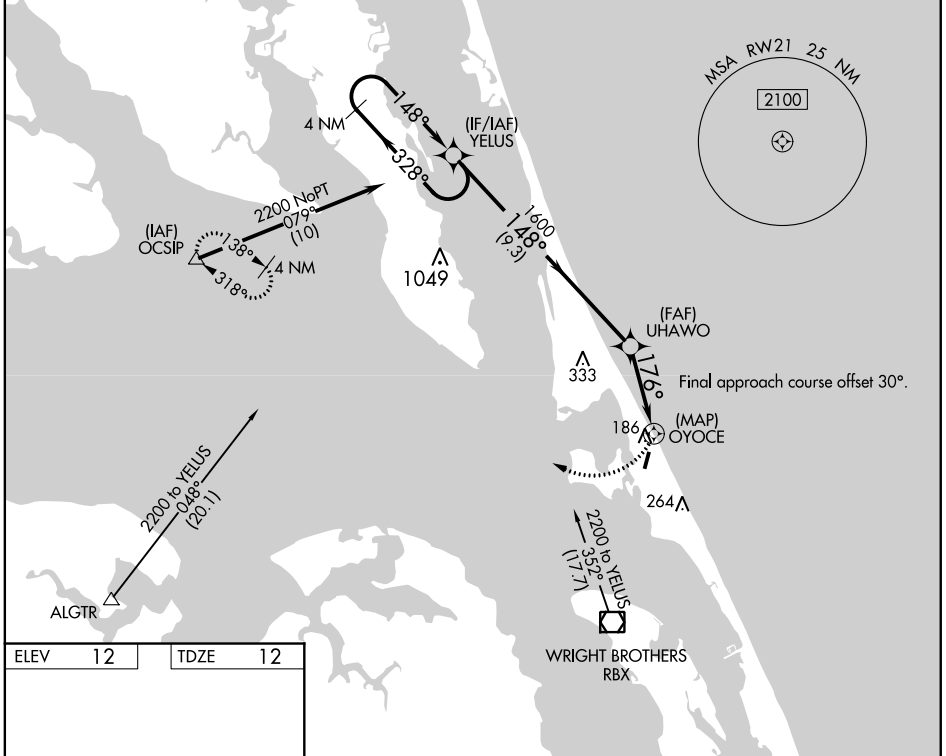
RNAV (GPS) RWY 21

FIRST FLIGHT (F'FA)

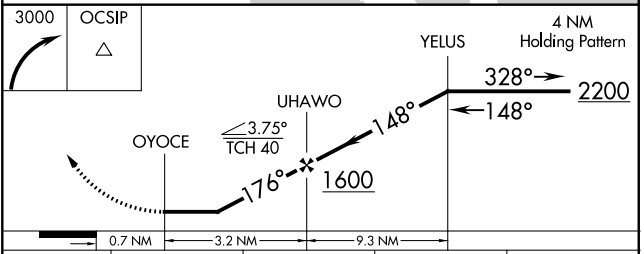
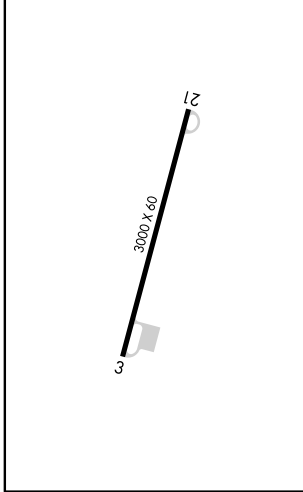
▼ Rwy 21 helicopter visibility reduction below 1 SM NA. DME/DME RNP-0.3 NA. Procedure NA at night.

MISSED APPROACH: Climbing right turn to 3000 direct OCSIP and hold.

AWOS-3 118.075	CHERRY POINT APP CON 124.725 350.35	CTAF 122.9
--------------------------	---	----------------------



ELEV 12	TDZE 12
---------	---------



CATEGORY	A	B	C	D
LP MDA	460-1	448 (500-1)		NA
LNAV MDA	500-1	488 (500-1)		NA
<input checked="" type="checkbox"/> CIRCLING	520-1 508 (600-1)	540-1 528 (600-1)		NA

SE-2, 16 JUN 2022 to 14 JUL 2022

SE-2, 16 JUN 2022 to 14 JUL 2022