

APP CRS 191°	Rwy Idg TDZE Apt Elev	5000 54 65
------------------------	-----------------------------	---------------------------------------

RNAV (GPS) RWY 19

INVERNESS (INF')

RNP APCH.

⚠ **⚠** Rwy 19 helicopter visibility reduction below 1 SM NA.

MISSED APPROACH: Climb to 2000 direct BOWSK and on track 176° to REBEC and hold.

AWOS-3
119.975

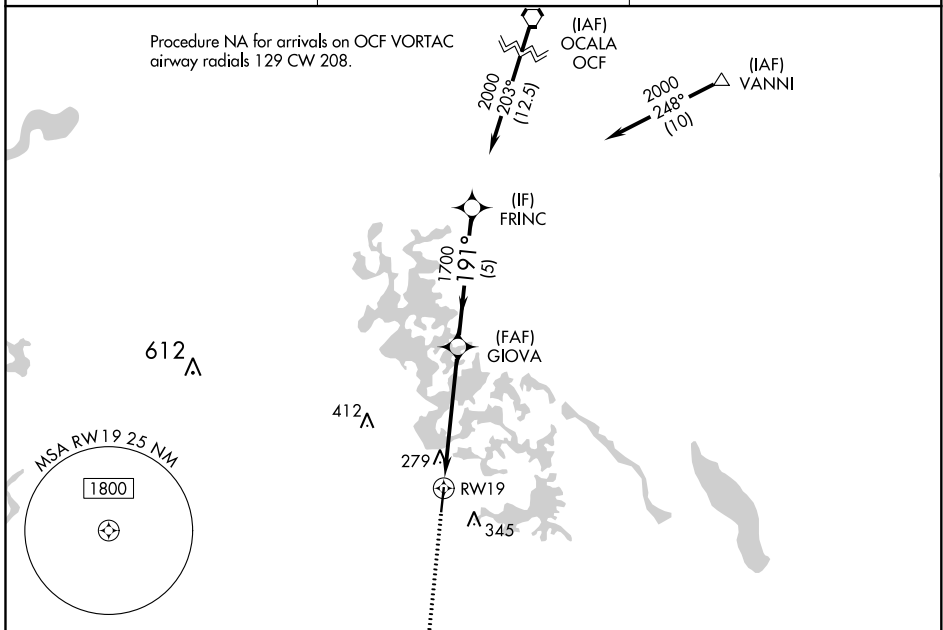
JACKSONVILLE APP CON
118.6 251.15

UNICOM
122.725 (CTAF) **📻**

Procedure NA for arrivals on OCF VORTAC
airway radials 129 CW 208.

(IAF) OCALA
OCF

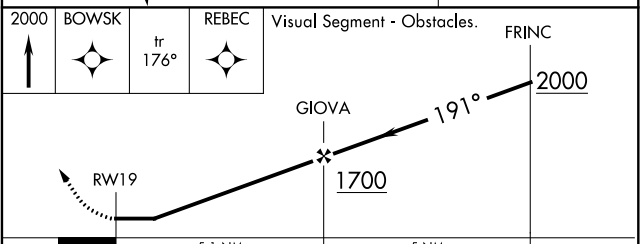
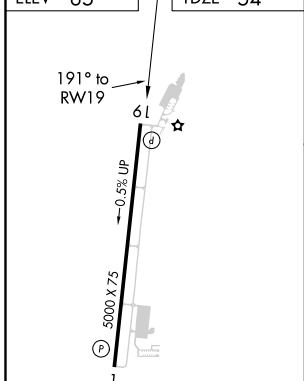
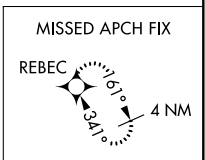
(IAF) VANNI



SE-3, 16 JUN 2022 to 14 JUL 2022

SE-3, 16 JUN 2022 to 14 JUL 2022

ELEV 65	TDZE 54
---------	---------



CATEGORY	A	B	C	D
LNAV MDA	580-1	526 (600-1)	580-1½ 526 (600-1½)	NA
CIRCLING	660-1	595 (600-1)	660-1½ 595 (600-1½)	NA

MIRL Rwy 1-19 **📻**
REIL Rwy 1 and 19 **📻**