

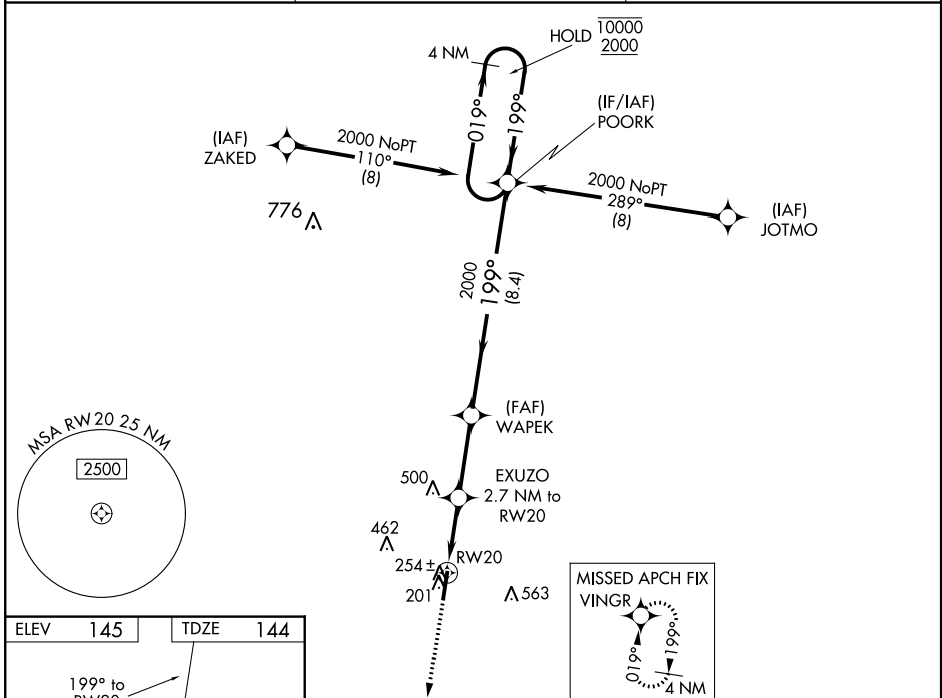
WAAS CH 72725 W20A	APP CRS 199°	Rwy Idg TDZE 144 Apt Elev 145
----------------------------------------	------------------------	---------------------------------------------------

RNAV (GPS) RWY 20

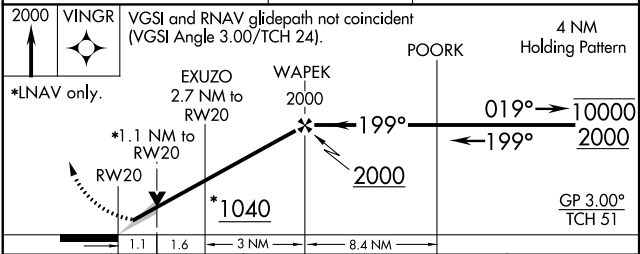
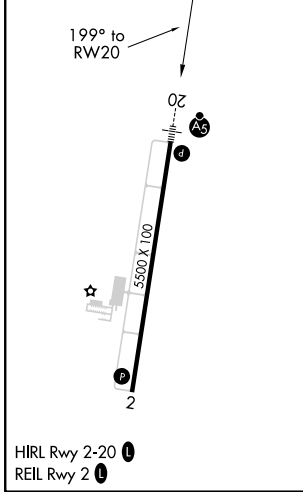
HALIFAX/NORTHAMPTON RGNL (IXA)

RNP APCH.	MALSR 	MISSED APPROACH: Climb to 2000 direct VINGR and hold.
	For uncompensated Baro-VNAV systems, LNAV/VNAV NA below -1.5°C or above 54°C. Circling NA east of Rwys 2-20. For inop ALS increase LNAV/VNAV visibility all Cats to 3/4 SM and LNAV Cats C/D to 1 SM.	

AWOS-3PT 119.975	WASHINGTON CENTER 132.025 290.425	UNICOM 123.075 (CTAF)
----------------------------	---------------------------------------------	---------------------------------



ELEV 145	TDZE 144
-----------------	-----------------



CATEGORY	A	B	C	D
LPV DA		344-1/2	200 (200-1/2)	
LNAV/VNAV DA		420-1/2	276 (300-1/2)	
LNAV MDA	520-1/2	376 (400-1/2)	520-5/8	376 (400-5/8)
CIRCLING	560-1 415 (500-1)	600-1 455 (500-1)	780-13/4 635 (700-13/4)	860-21/4 715 (800-21/4)

SE-2, 16 JUN 2022 to 14 JUL 2022

SE-2, 16 JUN 2022 to 14 JUL 2022