

WAAS CH <b>42536</b> <b>W32A</b>	APP CRS <b>323°</b>	Rwy Idg TDZE <b>116</b> Apt Elev <b>130</b>	<b>9501</b>
--	------------------------	---	-------------

# RNAV (GPS) RWY 32

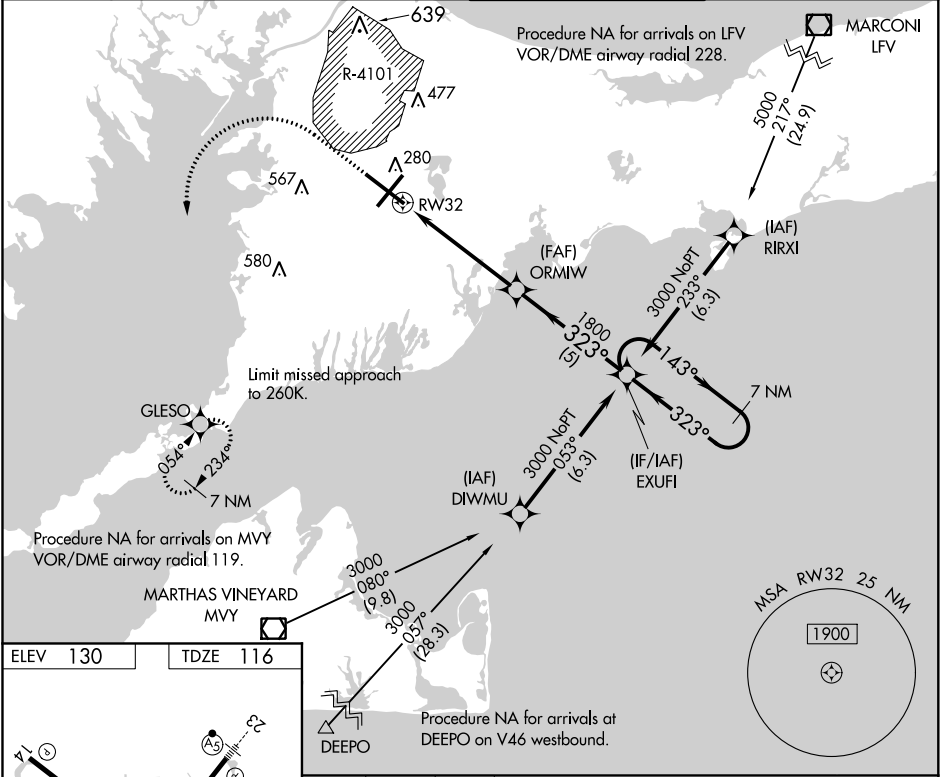
CAPE COD COAST GUARD AIR STATION (F'MH)

**⚠** For uncompensated Baro-VNAV systems, LNAV/VNAV NA below -15°C (5°F) or above 54°C (130°F). DME/DME RNP-0.3 NA. Circling NA NE of Rwy 14 and NW of Rwy 23.

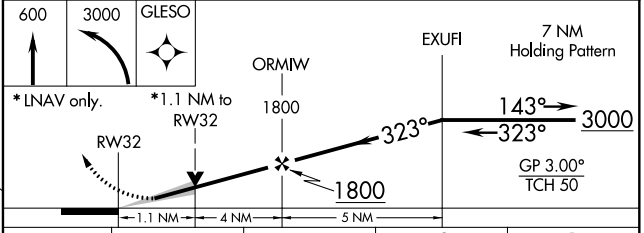
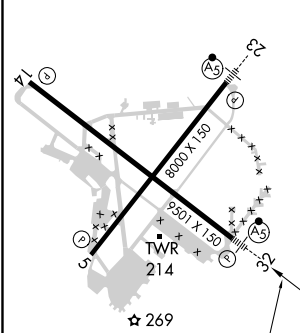


**MISSED APPROACH:** Climb to 600 then climbing left turn to 3000 direct GLESO and hold, continue climb-in-hold to 3000.

ATIS <b>120.475 236.825</b>	BOSTON APP CON * <b>118.2 284.6</b>	COAST GUARD TOWER <b>128.425 291.1</b>	GND CON <b>124.15 275.8</b>
--------------------------------	--	---	--------------------------------



ELEV 130	TDZE 116
----------	----------



CATEGORY	A	B	C	D
LPV DA		316/24	200 (200-½)	
LNAV/VNAV DA		429/26	313 (300-½)	
LNAV MDA	520/24	404 (400-½)	520/40	404 (400-¾)
<b>CIRCLING</b>	580-1 450 (500-1)	640-1 510 (600-1)	900-2¼ 770 (800-2¼)	900-2½ 770 (800-2½)

REIL Rws 5 and 14  
HIRL Rws 5-23 and 14-32

# RNAV (GPS) RWY 32

NE-1, 16 JUN 2022 to 14 JUL 2022

NE-1, 16 JUN 2022 to 14 JUL 2022