

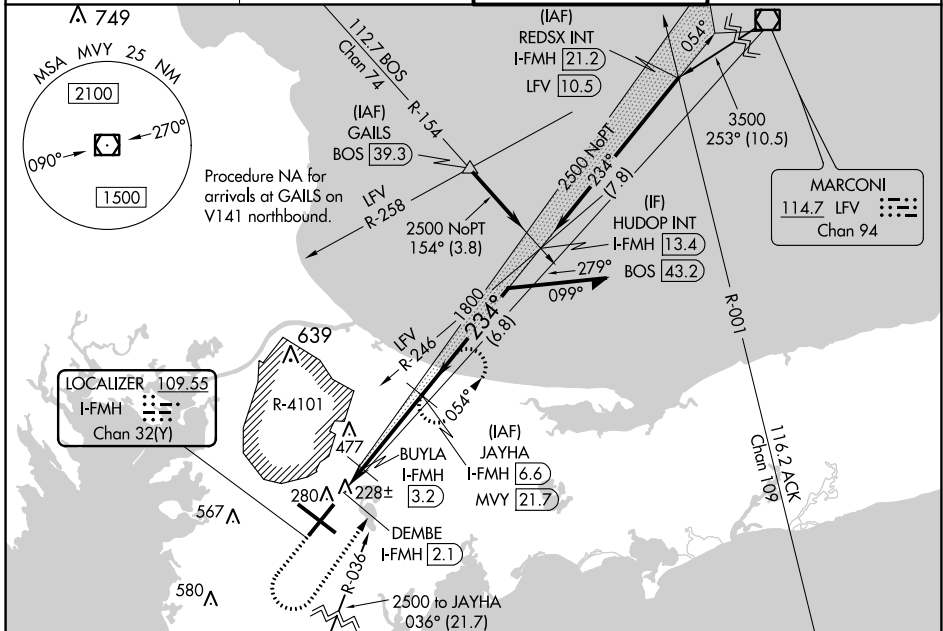
LOC/DME I-FMH <b>109.55</b> Chan <b>32(Y)</b>	APP CRS <b>234°</b>	Rwy Idg TDZE <b>126</b> Apt Elev <b>130</b>	<b>8000</b>
---	------------------------	---	-------------

# COPTER ILS Y or LOC Y RWY 23

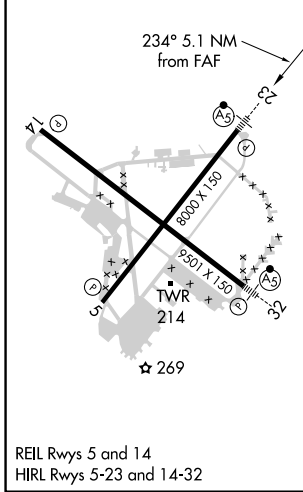
CAPE COD COAST GUARD AIR STATION (F'MH)

DME required.	MALSR 	MISSED APPROACH: Climb to 1400 then climbing left turn heading 050° and M'VY VOR/DME R-036 to 3000 direct JAYHA and hold.
For inop ALS increase, H-ILS 23 and H-LOC 23 visibility to RVR 2400. United States Coast Guard only.		

ATIS <b>120.475 236.825</b>	BOSTON APP CON ★ <b>118.2 284.6</b>	COAST GUARD TOWER <b>128.425 291.1</b>	GND CON <b>124.15 275.8</b>
--------------------------------	--	---	--------------------------------



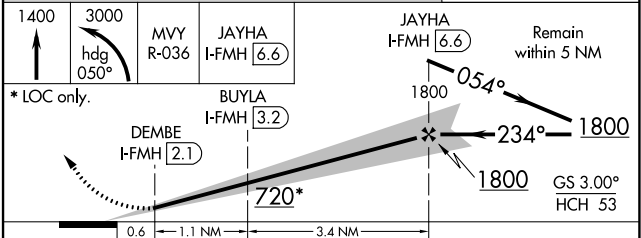
ELEV 130	TDZE 126
----------	----------



**NOT FOR CIVIL USE**

MARTHAS VINEYARD 114.5 M'VY Chan 92

ALTERNATE MISSED APCH FIX  
GLESO  
054° / 234°  
7 NM



CATEGORY	COPTER	
H-ILS 23	226/12	100 (100-¼)
H-LOC 23	480/12	354 (400-¼)

NE-1, 16 JUN 2022 to 14 JUL 2022

NE-1, 16 JUN 2022 to 14 JUL 2022