

APP CRS 268°	Rwy Idg 3500
	TDZE 1069
	Apt Elev 1069

RNAV (GPS) RWY 27

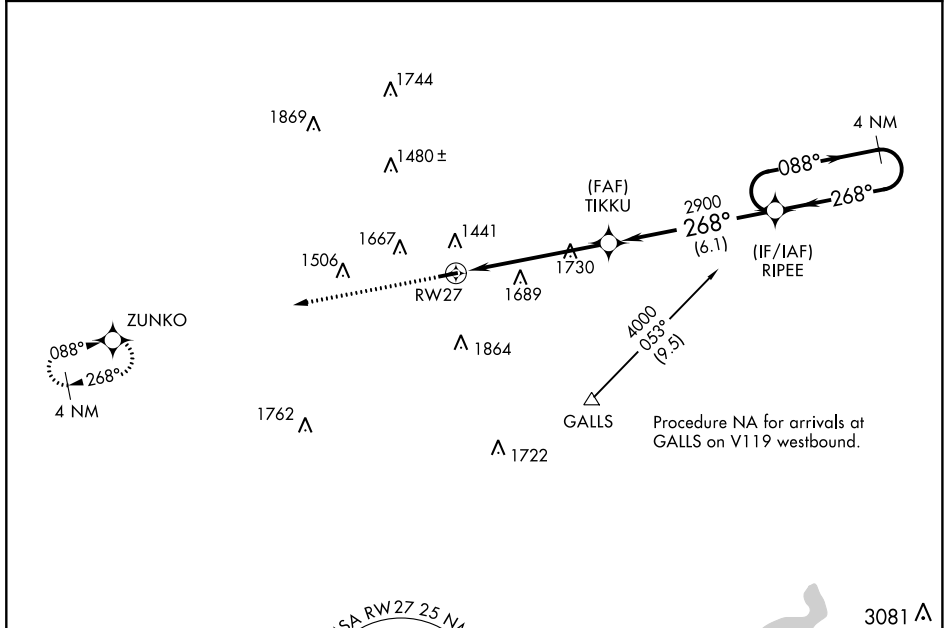
GREENE COUNTY (WAY)

RNP APCH.

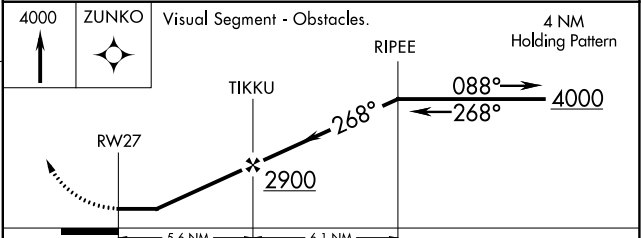
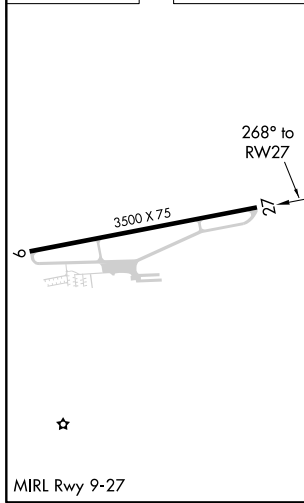
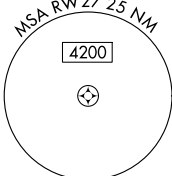
▼ Rwy 27 helicopter visibility reduction below 1 SM NA. Use Washington altimeter setting, when not received use Morgantown altimeter setting and increase all MDAs 20 feet. Straight-in, Circling Rwy 27 NA at night.
▲ NA

MISSED APPROACH: Climb to 4000 direct ZUNKO and hold.

AFJ AWOS-3PT 119.175	CLARKSBURG APP CON* 121.15 284.65	UNICOM 122.8 (CTAF) 0
--------------------------------	---	---------------------------------



ELEV 1069	TDZE 1069
-----------	-----------



CATEGORY	A	B	C	D
LNNAV MDA	2100-1¼ 1031 (1100-1¼)	2100-1½ 1031 (1100-1½)	2100-3 1031 (1100-3)	NA
C CIRCLING	2100-1¼ 1031 (1100-1¼)	2220-1½ 1151 (1200-1½)	2220-3 1151 (1200-3)	NA

NE-4, 16 JUN 2022 to 14 JUL 2022

NE-4, 16 JUN 2022 to 14 JUL 2022