

# RNAV (GPS) RWY 4

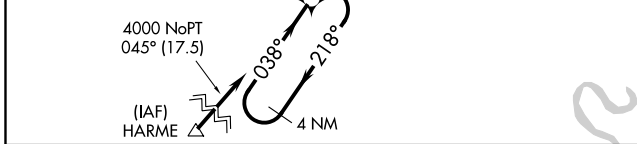
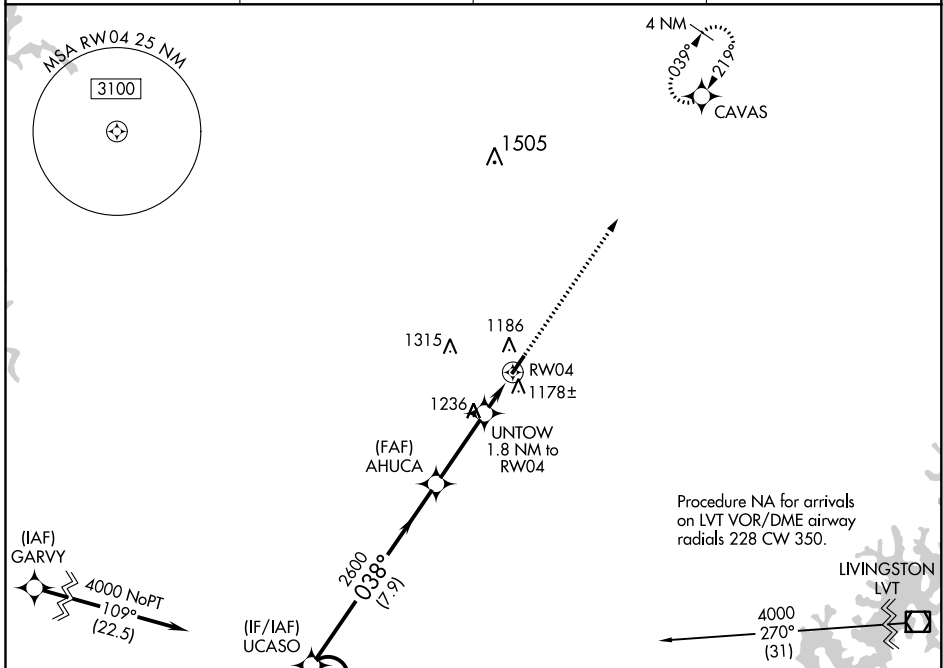
TOMPKINSVILLE/MONROE COUNTY (T'ZV)

APP CRS	Rwy Idg	<b>4000</b>
<b>038°</b>	TDZE	<b>1034</b>
	Apt Elev	<b>1036</b>

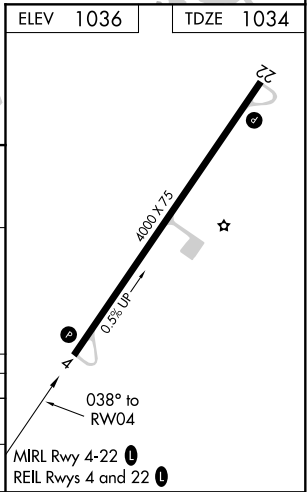
**▽** DME/DME RNP-0.3 NA.  
**△** NA Helicopter visibility reduction below 1 SM NA.  
 Night landing: Rwy 4 NA.  
 Use Glasgow altimeter setting.

MISSED APPROACH: Climb to 4000 direct CAVAS and hold.

AWOS-AV <b>124.175</b>	GLW AWOS-3 <b>118.525</b>	MEMPHIS CENTER <b>132.9 290.3</b>	UNICOM <b>123.05 (CTAF) 0</b>
---------------------------	------------------------------	--------------------------------------	----------------------------------



CATEGORY	A	B	C	D
LNNAV MDA	1540-1	506 (600-1)	1540-1 3/8 506 (600-1 3/8)	NA
<b>C</b> CIRCLING	1640-1 604 (700-1)	1800-1 764 (800-1)	1840-2 1/4 804 (900-2 1/4)	NA



# RNAV (GPS) RWY 4

SE-1, 16 JUN 2022 to 14 JUL 2022

SE-1, 16 JUN 2022 to 14 JUL 2022