

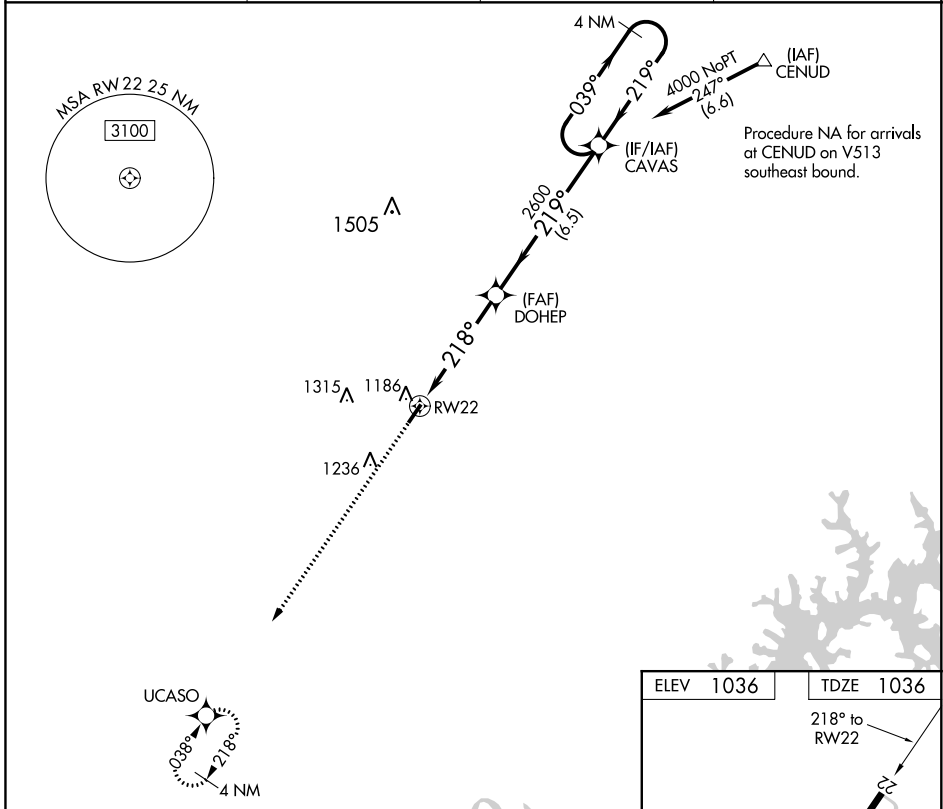
WAAS CH 58031 W22A	APP CRS 218°	Rwy Idg TDZE Apt Elev	4000 1036 1036
----------------------------------------	------------------------	-----------------------------	-------------------------------------------

RNAV (GPS) RWY 22

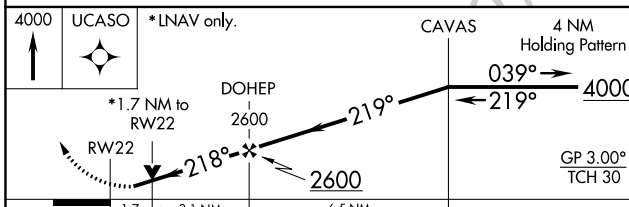
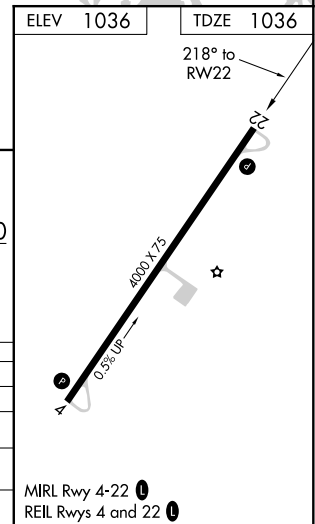
TOMPKINSVILLE/MONROE COUNTY (T'ZV)

NA Baro-VNAV NA. DME/DME RNP-0.3 NA. Helicopter visibility reduction below ¼ SM NA. Use Glasgow altimeter setting. Night landing: Rwy 4 NA. MISSED APPROACH: Climb to 4000 direct UCASO and hold.

AWOS-AV 124.175	GLW AWOS-3 118.525	MEMPHIS CENTER 132.9 290.3	UNICOM 123.05 (CTAF) 0
---------------------------	------------------------------	--------------------------------------	----------------------------------



Procedure NA for arrivals at CENUD on V513 southeast bound.



CATEGORY	A	B	C	D
LPV DA	1385-1¼	349 (400-1¼)		NA
LNAV/VNAV DA	1593-2	557 (600-2)		NA
LNAV MDA	1620-1	584 (600-1)	1620-1¾ 584 (600-1¾)	NA
C CIRCLING	1640-1 604 (700-1)	1800-1 764 (800-1)	1840-2¼ 804 (900-2¼)	NA

SE-1, 16 JUN 2022 to 14 JUL 2022

SE-1, 16 JUN 2022 to 14 JUL 2022