

WAAS CH 93715 W36A	APP CRS 001°	Rwy Idg 5002 TDZE 835 Apt Elev 845
--	------------------------	---

RNAV (GPS) RWY 36

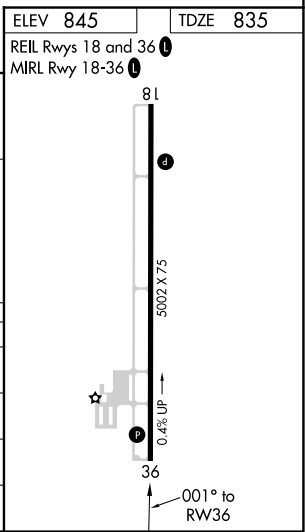
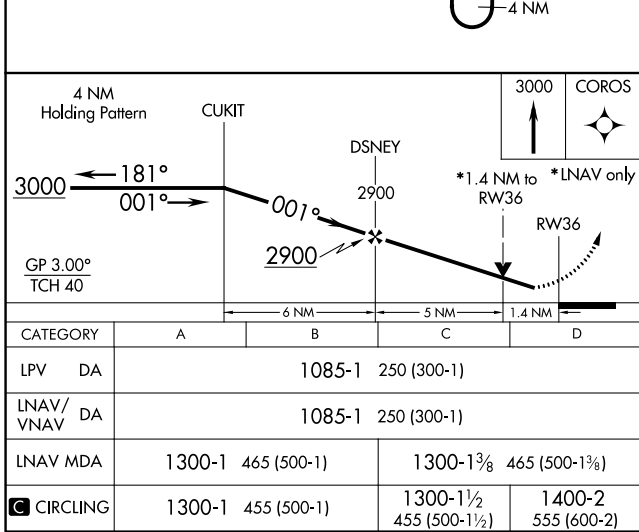
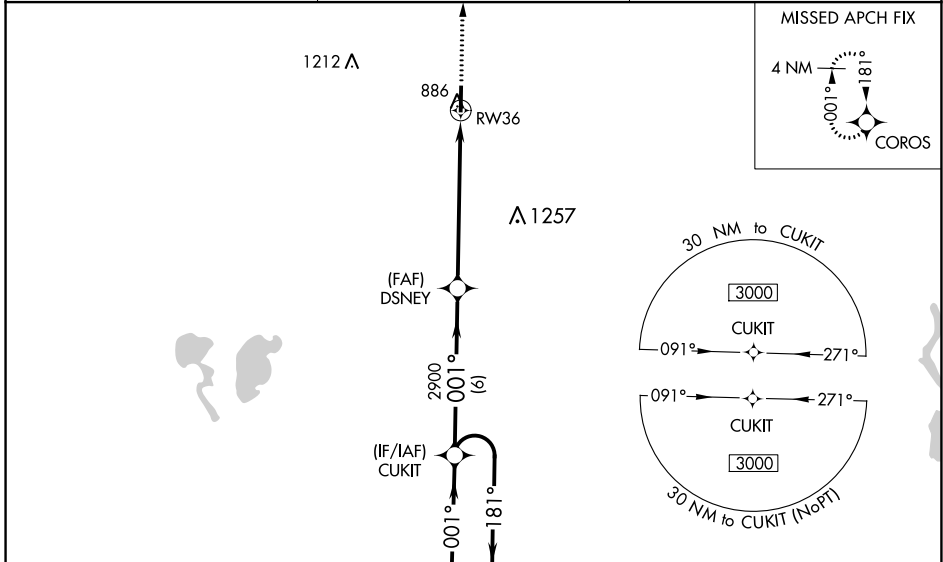
NORTH CENTRAL MISSOURI RGNL (M08)

RNP APCH.

▽ For uncompensated Baro-VNAV systems, LNAV/VNAV NA below -16°C or above 54°C.
△ NA Baro-VNAV and VDP NA when using Kirksville altimeter setting. When local altimeter setting not received, use Kirksville altimeter setting and increase all LPV and LNAV/VNAV DA to 1169 feet and increase all visibility 1/8 mile; increase all MDA 100 feet, increase LNAV Cat C/D visibility 1/4 mile, and Circling Cat C visibility 1/8 mile. Rwy 36 helicopter visibility reduction below 3/4 SM NA.

MISSED APPROACH:
Climb to 3000 direct COROS and hold.

AWOS-2 118.425	KANSAS CITY CENTER 125.25 235.975	CTAF 122.9
--------------------------	---	----------------------



NC-3, 16 JUN 2022 to 14 JUL 2022

NC-3, 16 JUN 2022 to 14 JUL 2022