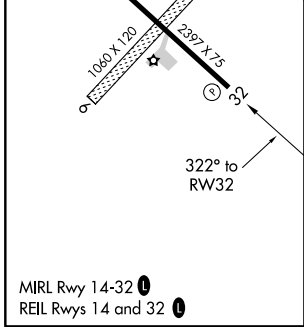
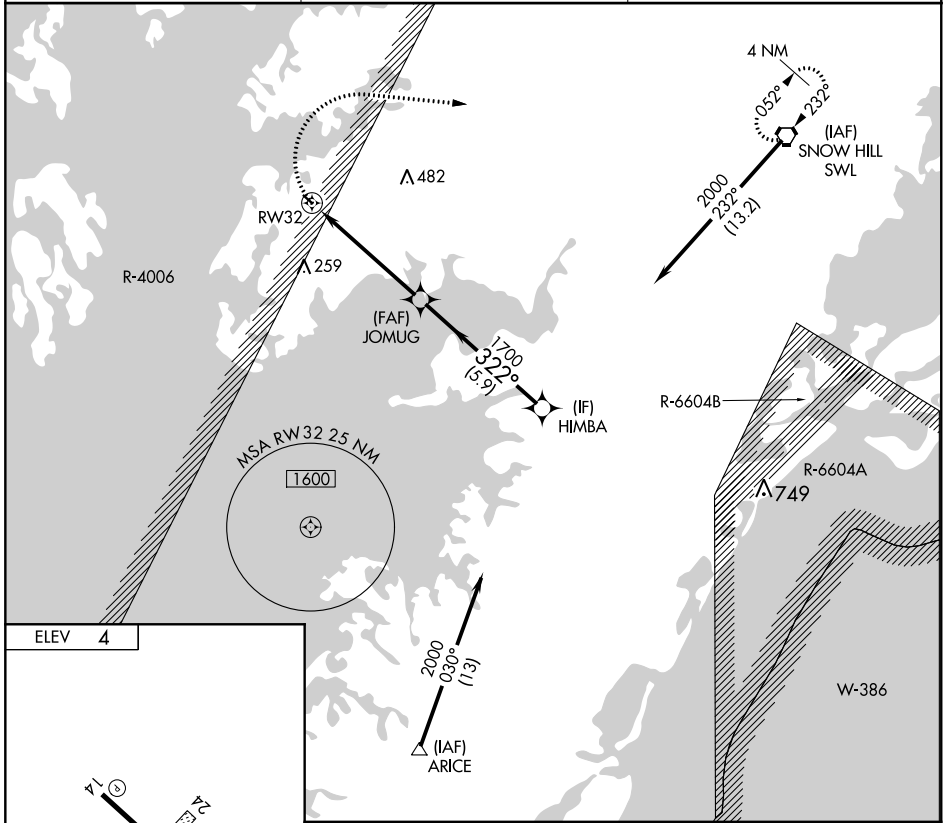


APP CRS <b>322°</b>	Rwy Idg TDZE Apt Elev	<b>N/A</b> <b>N/A</b> <b>4</b>
------------------------	-----------------------------	--------------------------------------

**RNAV (GPS)-B**  
CRISFIELD-SOMERSET COUNTY (W41)

RNP APCH.		MISSED APPROACH: Climbing right turn to 2000 direct SWL VORTAC and hold.
<p>▼ Circling NA to Rwys 6 and 24. ▲ NA Procedure NA at night. Use Wallops Island altimeter setting.</p>		
WAL ASOS <b>119.175</b>	PATUXENT APP CON ★ <b>127.95 314.0</b>	UNICOM <b>122.8 (CTAF) 0</b>



2000	SWL	Visual Segment - Obstacles.												
<table border="1"> <thead> <tr> <th>CATEGORY</th> <th>A</th> <th>B</th> <th>C</th> <th>NA</th> <th>D</th> </tr> </thead> <tbody> <tr> <td><b>C</b> CIRCLING</td> <td>520-1</td> <td>516 (600-1)</td> <td></td> <td></td> <td></td> </tr> </tbody> </table>			CATEGORY	A	B	C	NA	D	<b>C</b> CIRCLING	520-1	516 (600-1)			
CATEGORY	A	B	C	NA	D									
<b>C</b> CIRCLING	520-1	516 (600-1)												

NE-3, 16 JUN 2022 to 14 JUL 2022

NE-3, 16 JUN 2022 to 14 JUL 2022