

APP CRS	Rwy Idg	2509
070°	TDZE	1643
	Apt Elev	1643

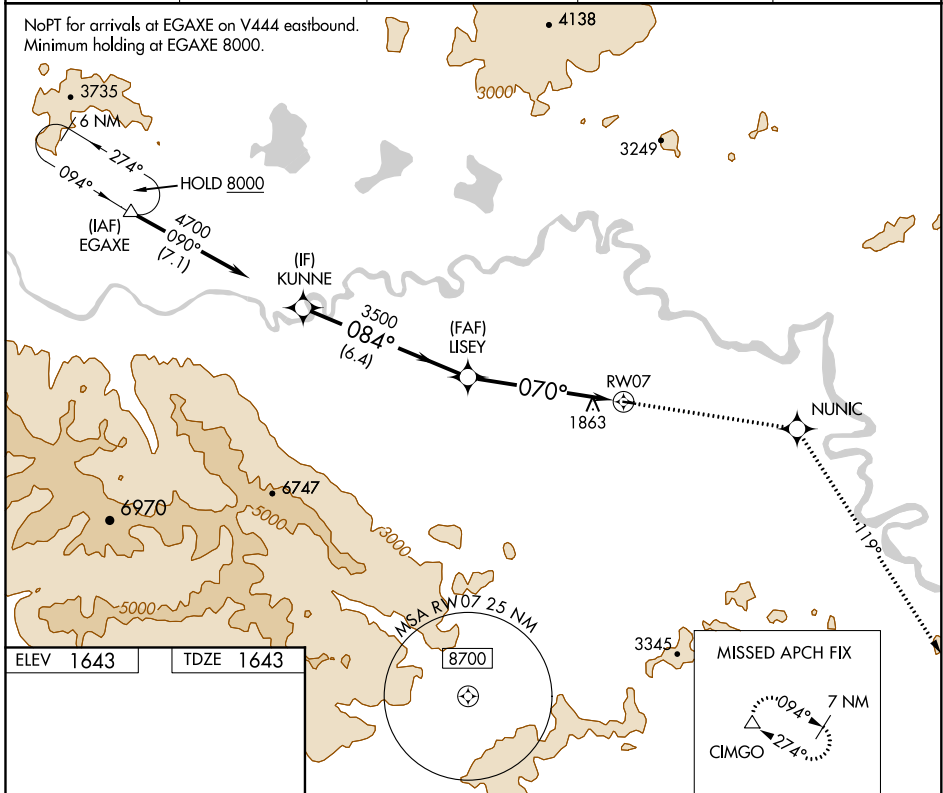
RNAV (GPS) RWY 7

TOK JUNCTION (6K8) (PFTO)

 	DME/DME RNP-0.3 NA. Use Northway altimeter setting.	MISSED APPROACH: Climb to 8000 direct NUNIC and via 119° track to CIMGO and hold, continue climb-in-hold to 8000.		
------	--	---	--	--

AWOS-3PT 118.1	ORT/PAOR ASOS 135.4	ANCHORAGE CENTER 126.55 323.0	NORTHWAY RADIO 122.4	UNICOM 122.8 (CTAF)
--------------------------	-------------------------------	---	--------------------------------	-------------------------------

NoPT for arrivals at EGAXE on V444 eastbound.
Minimum holding at EGAXE 8000.



ELEV 1643	TDZE 1643
-----------	-----------

MIRL Rwy 7-25

CATEGORY	A	B	C	D
LNAV MDA	2500-1 857 (900-1)	2500-1¼ 857 (900-1¼)	2500-2½ 857 (900-2½)	NA
CIRCLING	2540-1¼	897 (900-1¼)	2540-2¾ 897 (900-2¾)	NA

AK, 19 MAY 2022 to 14 JUL 2022

AK, 19 MAY 2022 to 14 JUL 2022