

WAAS CH 40209 W34A	APP CRS 342°	Rwy Idg 3248 TDZE 17 Apt Elev 17
---------------------------------	------------------------	---

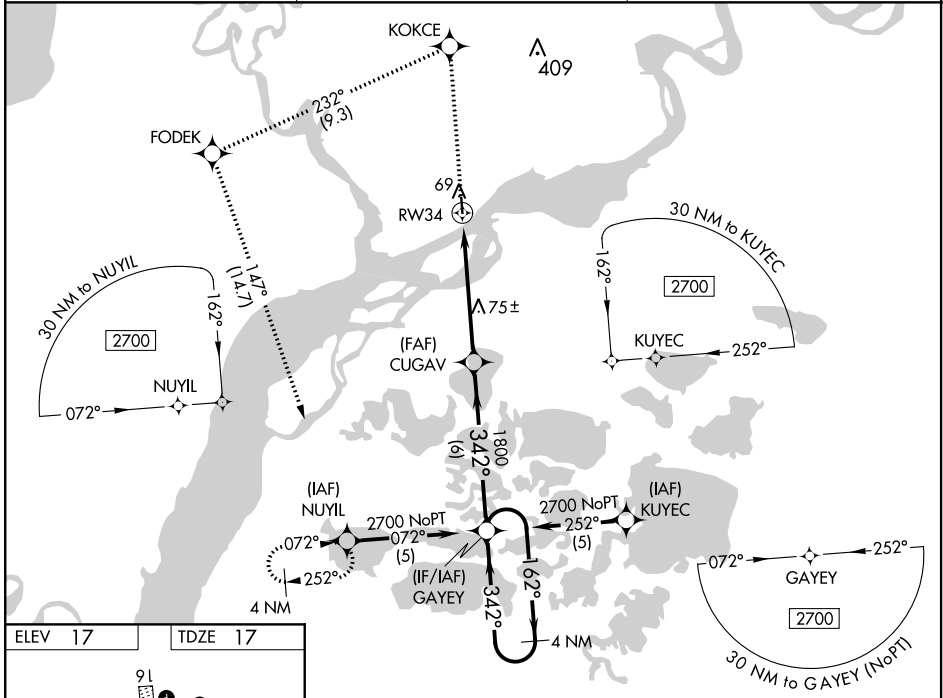
RNAV (GPS) RWY 34

NAPAKIAK (WNA) (PANA)

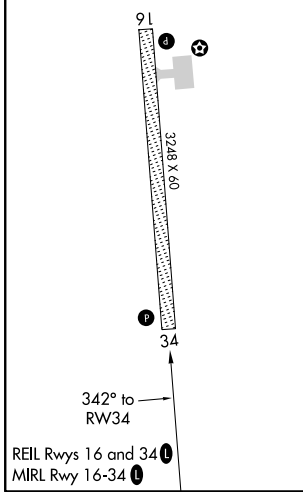
V DME/DME RNP-0.3 NA. When local altimeter setting not received, use Bethel altimeter setting. Procedure NA at night for Cat C and D aircraft. Rwy 34 helicopter visibility reduction 1 SM NA.

MISSED APPROACH: Climb to 2700 direct KOKCE and left turn on track 232° to FODEK on track 147° to NUYIL and hold.

AWOS-3P 121.425	ANCHORAGE CENTER 125.2 372.0	CTAF 122.9
---------------------------	--	----------------------

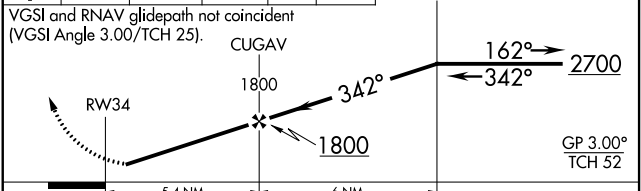


ELEV 17	TDZE 17
---------	---------



NAPAKIAK, ALASKA
Orig-B 19MAY22

2700	KOKCE	tr 232°	FODEK	tr 147°	NUYIL	4 NM Holding Pattern
------	-------	---------	-------	---------	-------	----------------------



CATEGORY	A	B	C	D
LPV DA	298-1 281 (300-1)			
LNAV MDA	360-1 343 (400-1)		360-1¼ 343 (400-1¼)	
CIRCLING	500-1	483 (500-1)	540-1½ 523 (600-1½)	680-2 663 (700-2)

60°41'N-161°59'W

NAPAKIAK (WNA) (PANA)

RNAV (GPS) RWY 34

AK, 19 MAY 2022 to 14 JUL 2022

AK, 19 MAY 2022 to 14 JUL 2022