

WAAAS CH <b>69409</b> <b>W16A</b>	APP CRS <b>162°</b>	Rwy Idg <b>3248</b> TDZE <b>17</b> Apt Elev <b>17</b>
---	------------------------	---

# RNAV (GPS) RWY 16

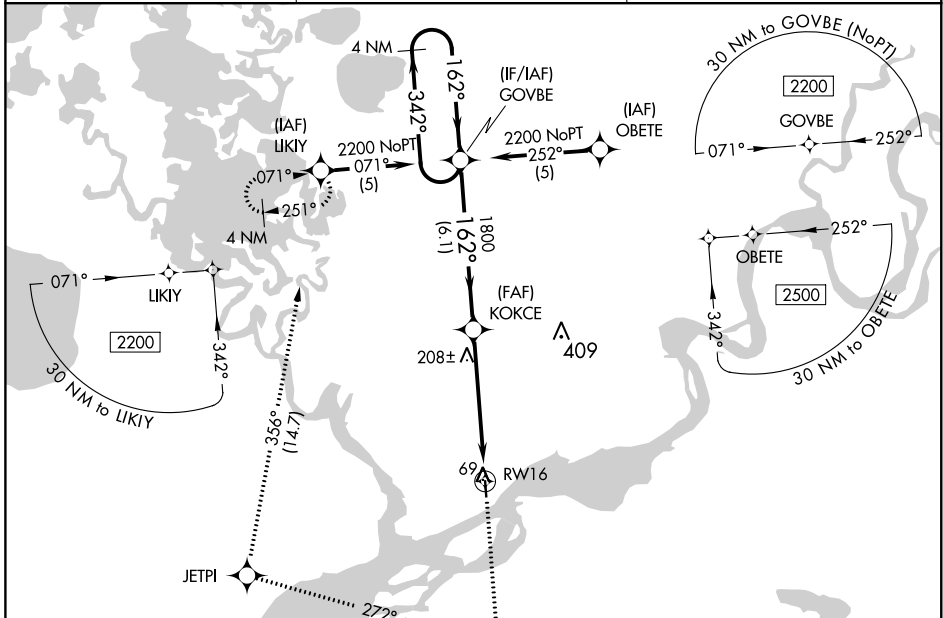
NAPAKIAK (WNA) (PANA)

**V** DME/DME RNP-0.3 NA. When local altimeter setting not received, use Bethel altimeter setting. Rwy 16 helicopter visibility reduction 1 SM NA. Procedure NA at night for Cat C and D aircraft.

**A** NA

**W** MISSED APPROACH: Climb to 2200 direct CUGAV and right turn on track 272° to JETPI on track 356° to LIKIY and hold.

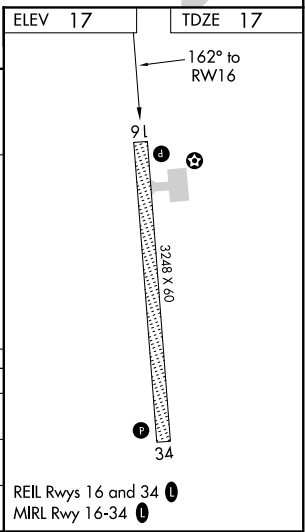
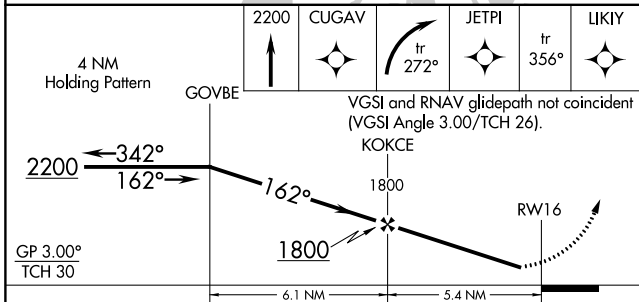
AWOS-3P <b>121.425</b>	ANCHORAGE CENTER <b>125.2 372.0</b>	CTAF <b>122.9</b>
---------------------------	--	----------------------



AK, 19 MAY 2022 to 14 JUL 2022

AK, 19 MAY 2022 to 14 JUL 2022

ELEV 17	TDZE 17
---------	---------



GP 3.00° TCH 30	2200	←342°	162°→	1800	1800	1800	1800
				6.1 NM	5.4 NM		
CATEGORY	A	B	C	D			
LPV DA	298-1 281 (300-1)						
LNAV MDA	500-1	483 (500-1)	500-1½ 483 (500-1½)	500-1½ 483 (500-1½)			
CIRCLING	500-1	483 (500-1)	540-1½ 523 (600-1½)	680-2 663 (700-2)			

REIL Rwy 16 and 34  
MIRL Rwy 16-34