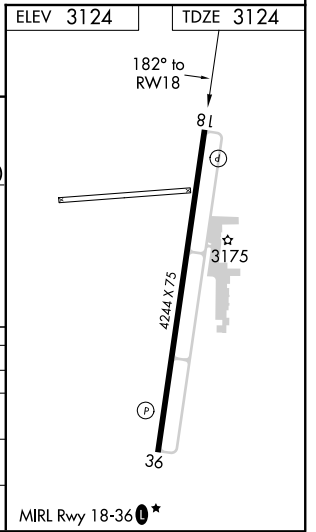
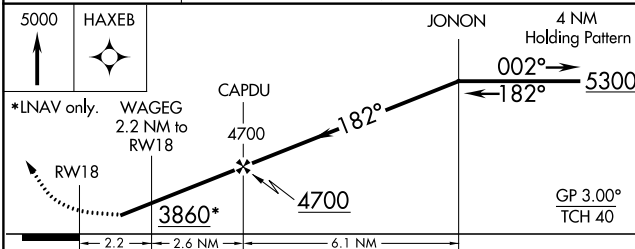
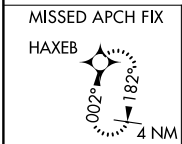
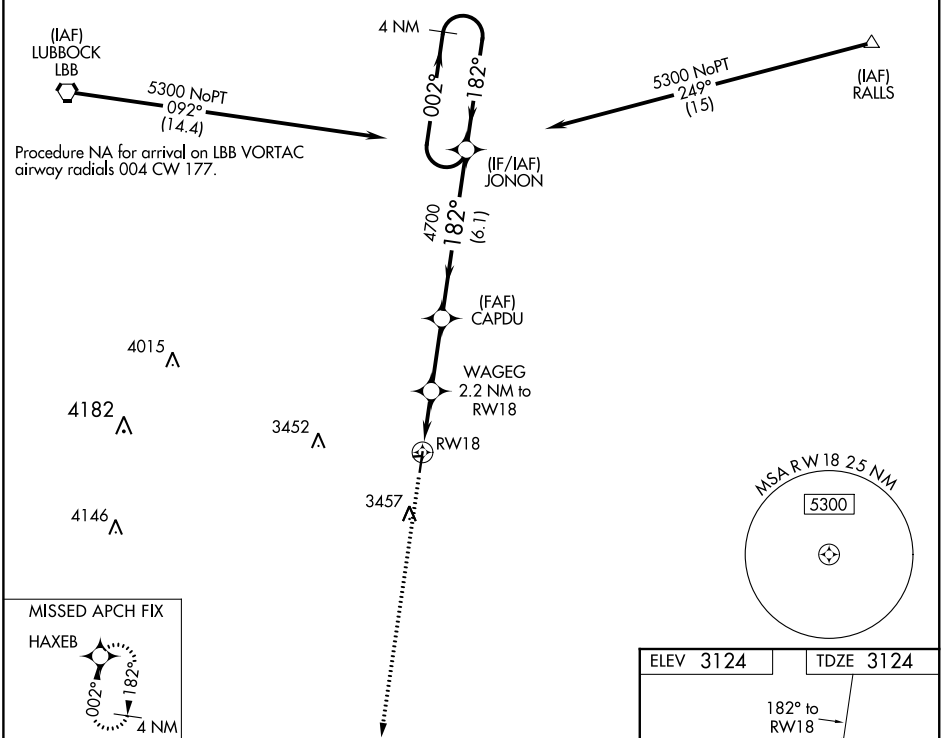


WAAS CH 42739 W18A	APP CRS 182°	Rwy ldg 4244 TDZE 3124 Apt Elev 3124
--	------------------------	---

RNAV (GPS) RWY 18

CITY OF SLATON/LARRY T NEAL MEML (F49)

V Baro-VNAV NA. DME/DME RNP-0.3 NA. Rwy 18 helicopter visibility reduction below 3/4 SM NA.	MISSED APPROACH: Climb to 5000 direct HAXEB and hold.	
LBB ASOS 125.3	LUBBOCK APP CON 119.2 351.8	UNICOM 123.0 (CTAF) 0



CATEGORY	A	B	C	D
LPV DA		3427-1	303 (400-1)	
LNAV/VNAV DA		3427-1	303 (400-1)	
LNAV MDA		3480-1	356 (400-1)	
C CIRCLING	3680-1 556 (600-1)	3820-1 696 (700-1)	3820-2 696 (700-2)	3820-2 1/4 696 (700-2 1/4)

SC-2, 16 JUN 2022 to 14 JUL 2022

SC-2, 16 JUN 2022 to 14 JUL 2022