

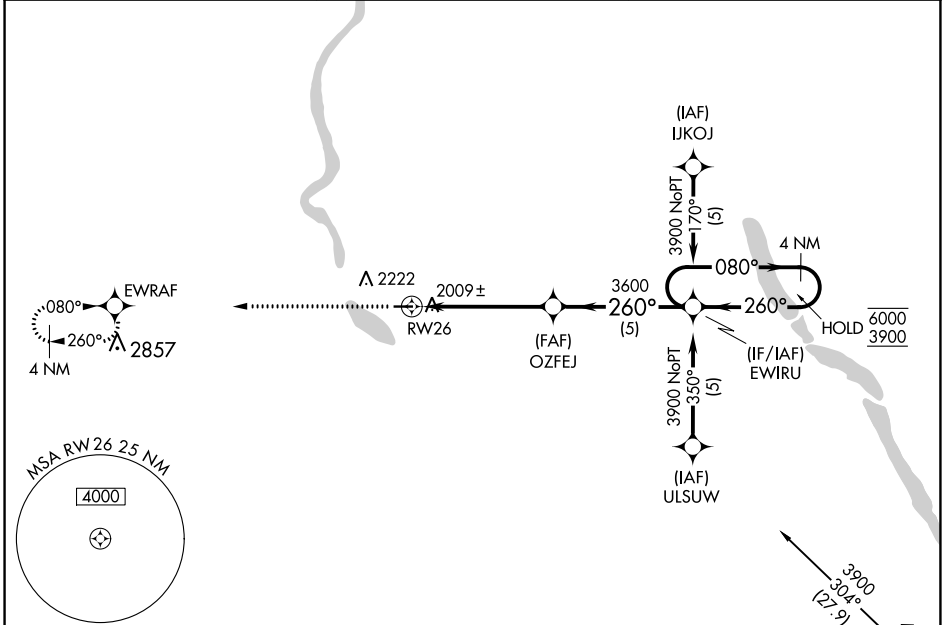
APP CRS	Rwy Idg	<b>3700</b>
<b>260°</b>	TDZE	<b>1960</b>
	Apt Elev	<b>1962</b>

# RNAV (GPS) RWY 26

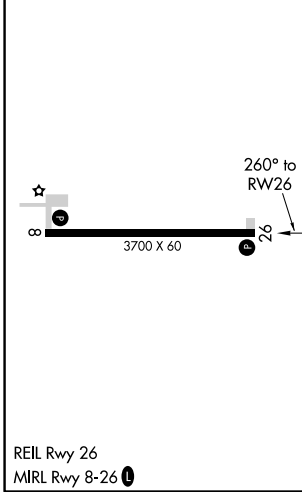
KENMARE MUNI (7K5)

RNP APCH.	Procedure NA at night. Use Minot Intl altimeter setting.	MISSED APPROACH: Climb to 4000 direct EWRAF and hold.
▼ NA ▲ NA		

MOT ASOS <b>118.725</b>	MINOT APP CON * <b>119.6 363.8</b>	UNICOM <b>122.8 (CTAF) 0</b>
----------------------------	---------------------------------------	---------------------------------



ELEV 1962	TDZE 1960
-----------	-----------



4000 ↑ EWRAF VGS1 and descent angles not coincident (VGS1 Angle 3.00/TCH 30).	OZFEJ EWIRU 4 NM Holding Pattern
RWY 26 3700 X 60 TW 26 260° to RWY 26	3600 3.00° TCH 40 5.1 NM 5 NM 080° → ← 260° 6000 3900
CATEGORY	A B C D
LNAV MDA	2420-1 460 (500-1) NA
CIRCLING	2660-1¼ 698 (700-1¼) 2660-1½ 698 (700-1½) NA

NC-1, 16 JUN 2022 to 14 JUL 2022

NC-1, 16 JUN 2022 to 14 JUL 2022