

WAAS CH <b>70630</b> <b>W30A</b>	APP CRS <b>293°</b>	Rwy Idg TDZE Apt Elev	<b>4300</b> <b>918</b> <b>918</b>
--	------------------------	-----------------------------	---

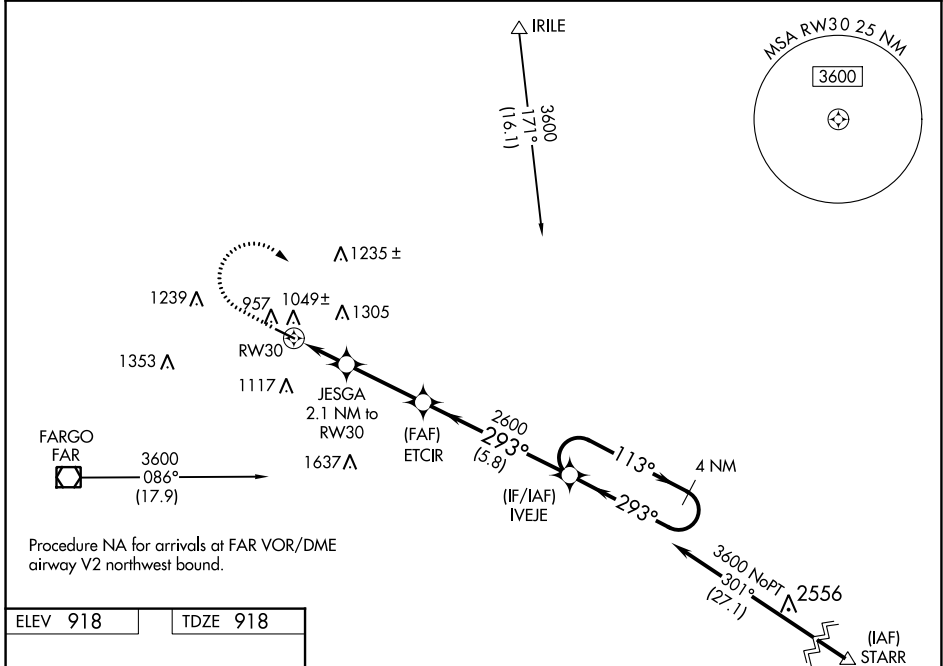
# RNAV (GPS) RWY 30

MOORHEAD MUNI/FLORENCE KLINGENSMITH FLD (JKJ)

**⚠** For uncompensated Baro-VNAV systems, LNAV/VNAV NA below -16°C (4°F) or above 54°C (130°F). DME/DME RNP-0.3 NA. When local altimeter setting not received, use Hector Intl altimeter setting and increase all DA 21 feet, increase all MDA 40 feet.

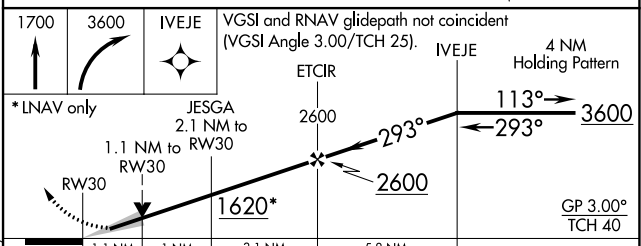
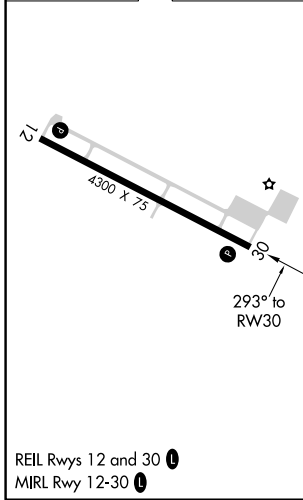
**MISSED APPROACH:** Climb to 1700 then climbing right turn to 3600 direct IVEJE and hold.

AWOS-3 <b>120.0</b>	FARGO APP CON <b>120.4 377.15</b>	GCO <b>121.725</b>	UNICOM <b>123.0</b> (CTAF) <b>📻</b>
------------------------	--------------------------------------	-----------------------	--



Procedure NA for arrivals at FAR VOR/DME airway V2 northwest bound.

ELEV 918	TDZE 918
----------	----------



CATEGORY	A	B	C	D
LPV DA	1168-1	250 (300-1)		NA
LNAV/VNAV DA	1211-1	293 (300-1)		NA
LNAV MDA	1300-1	382 (400-1)		NA
CIRCLING	1360-1 442 (500-1)	1380-1 462 (500-1)		NA

NC-1, 16 JUN 2022 to 14 JUL 2022

NC-1, 16 JUN 2022 to 14 JUL 2022