

DENVER CENTER
119.85 363.15
UNICOM
122.8 (CTAF)

TAKEOFF MINIMUMS

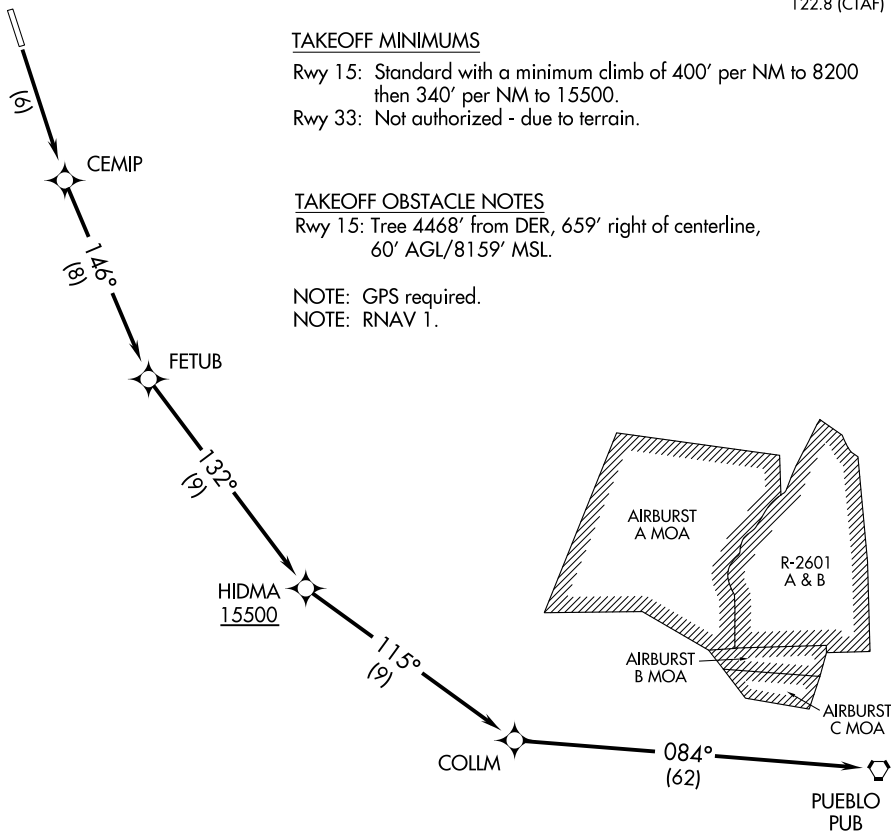
Rwy 15: Standard with a minimum climb of 400' per NM to 8200 then 340' per NM to 15500.
Rwy 33: Not authorized - due to terrain.

TAKEOFF OBSTACLE NOTES

Rwy 15: Tree 4468' from DER, 659' right of centerline, 60' AGL/8159' MSL.

NOTE: GPS required.

NOTE: RNAV 1.



NOTE: Chart not to scale.

DEPARTURE ROUTE DESCRIPTION

TAKEOFF RUNWAY 15: Climb direct CEMIP WP, then via 146° track to FETUB WP then via 132° track to cross HIDMA WP at or above 15500', then via depicted route to PUB VORTAC.

TAKEOFF RUNWAY 33: Not authorized.

SW-1, 16 JUN 2022 to 14 JUL 2022

SW-1, 16 JUN 2022 to 14 JUL 2022