

APP CRS	Rwy Idg	<b>3200</b>
<b>099°</b>	TDZE	<b>400</b>
	Apt Elev	<b>400</b>

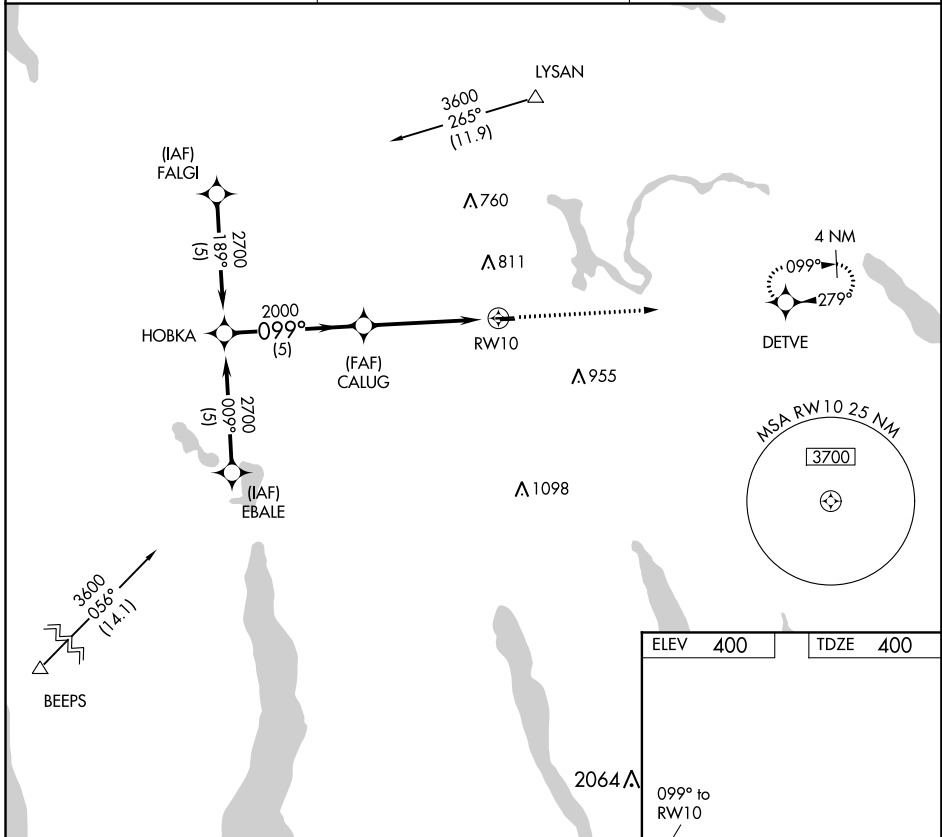
# RNAV (GPS) RWY 10

WHITFORDS (B16)

RNP APCH.	<p>▼ Use Syracuse altimeter setting. Procedure NA at night.</p> <p>▲ NA Rwy 10 helicopter visibility reduction below 1 SM NA.</p>
-----------	---

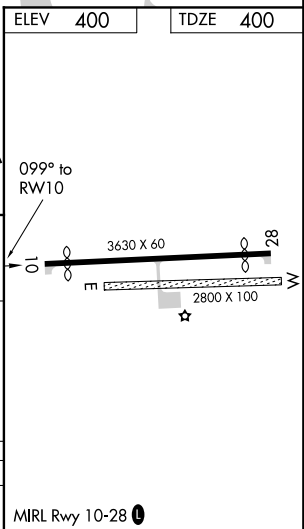
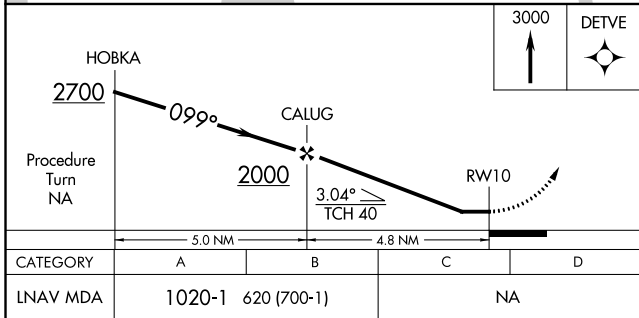
MISSED APPROACH: Climb to 3000 direct DETVE WP and hold.

SYRACUSE APP CON <b>126.125 269.125</b>	UNICOM <b>122.8</b> (CTAF)	<b>122.7</b> <b>0</b>
--	-------------------------------	-----------------------



NE-2, 16 JUN 2022 to 14 JUL 2022

NE-2, 16 JUN 2022 to 14 JUL 2022



Procedure Turn NA				
CATEGORY	A	B	C	D
LNAV MDA	1020-1	620 (700-1)		NA

MIRL Rwy 10-28 **0**