

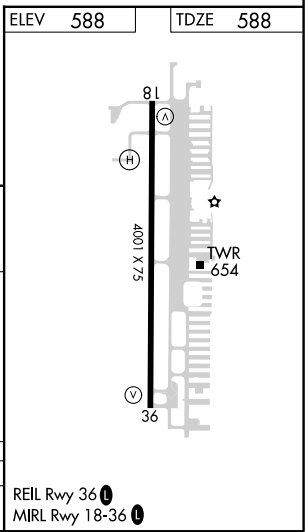
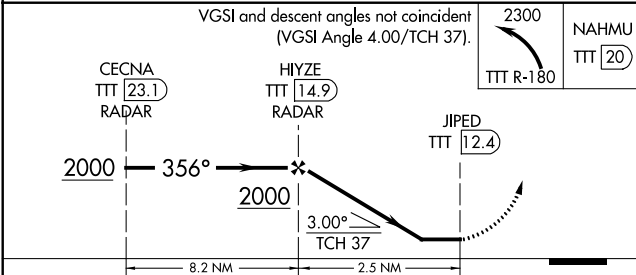
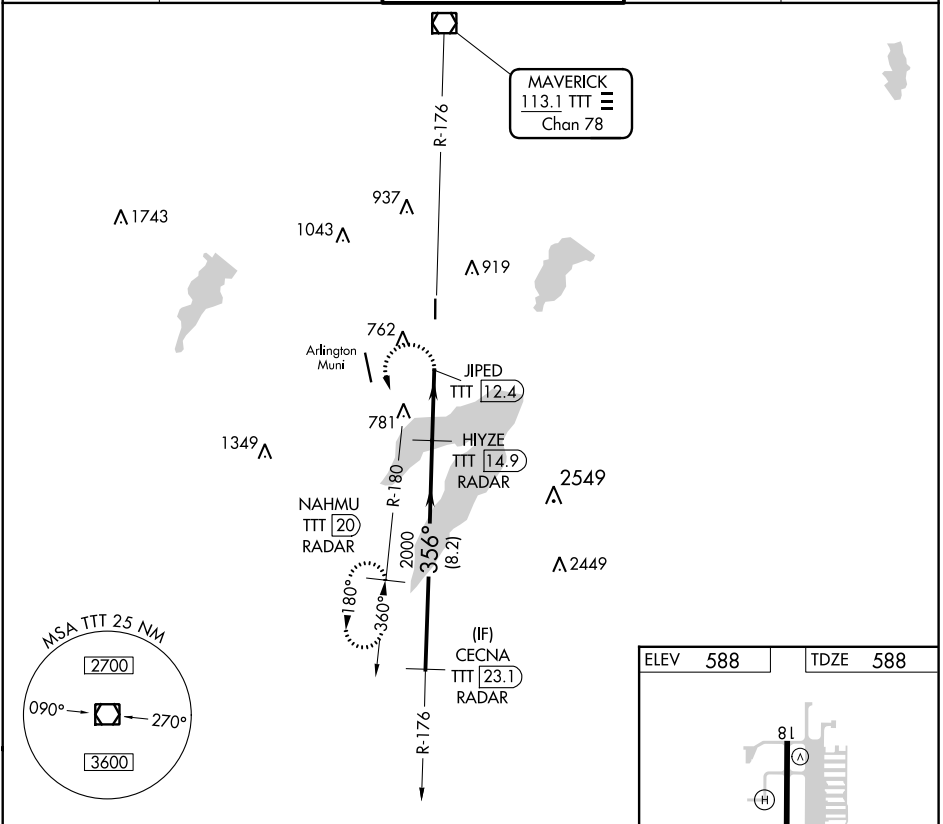
VOR/DME TTT 113.1 Chan 78	APP CRS 356°	Rwy Idg 4001 TDZE 588 Apt Elev 588
---	------------------------	---

VOR RWY 36

GRAND PRAIRIE MUNI (GPM)

RADAR and DME required.		MISSED APPROACH: Climbing left turn to 2300 on TTT R-180 to NAHMU/20 DME/RADAR and hold.		
-------------------------	--	--	--	--

AWOS-3P 118.475	REGIONAL APP CON 135.975 379.9	GRAND PRAIRIE TOWER* 128.55 (CTAF) 1	GND CON 121.15	UNICOM 123.075
---------------------------	--	--	--------------------------	--------------------------



CATEGORY	A	B	C	D
S-36	1040-2½	452 (500-2½)	NA	

SC-2, 16 JUN 2022 to 14 JUL 2022

SC-2, 16 JUN 2022 to 14 JUL 2022