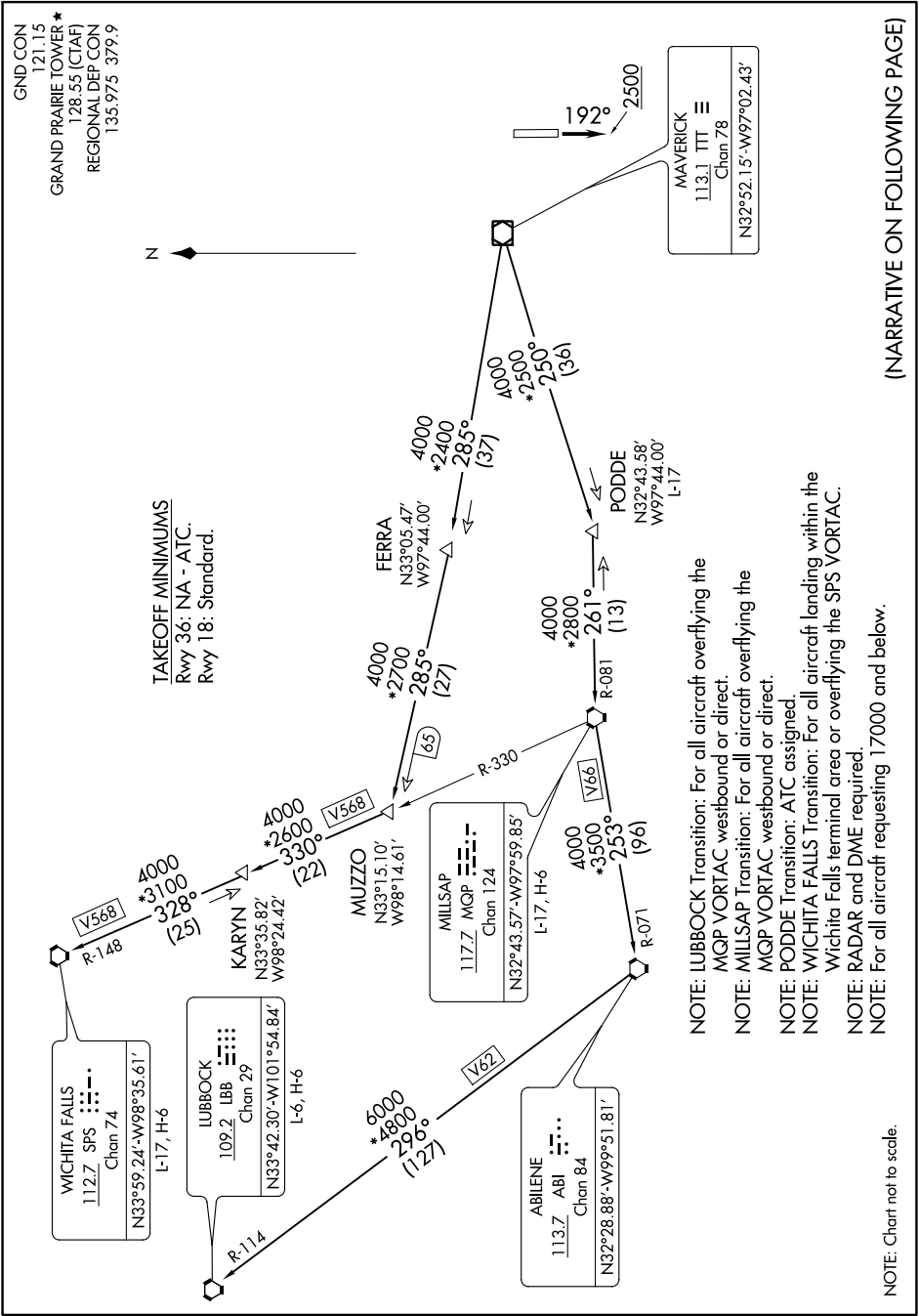


KINGDOM THREE DEPARTURE

SC-2, 16 JUN 2022 to 14 JUL 2022



- NOTE: LUBBOCK Transition: For all aircraft overlying the MQP VORTAC westbound or direct.
- NOTE: MILLSAP Transition: For all aircraft overlying the MQP VORTAC westbound or direct.
- NOTE: PODDE Transition: ATC assigned.
- NOTE: WICHITA FALLS Transition: For all aircraft landing within the Wichita Falls terminal area or overlying the SPS VORTAC.
- NOTE: RADAR and DME required.
- NOTE: For all aircraft requesting 17000 and below.

(NARRATIVE ON FOLLOWING PAGE)

SC-2, 16 JUN 2022 to 14 JUL 2022

KINGDOM THREE DEPARTURE