

JOE POOL FIVE DEPARTURE

GND CON
121.15
GRAND PRAIRIE TOWER ★
128.55 (CTAF)
REGIONAL DEP CON
135.975 379.9

TAKEOFF MINIMUMS

Rwy 18: Standard
Rwy 36: NA - ATC.

MAVERICK 113.1 TTT
Chan 78
N32°52.15'
W97°02.43'

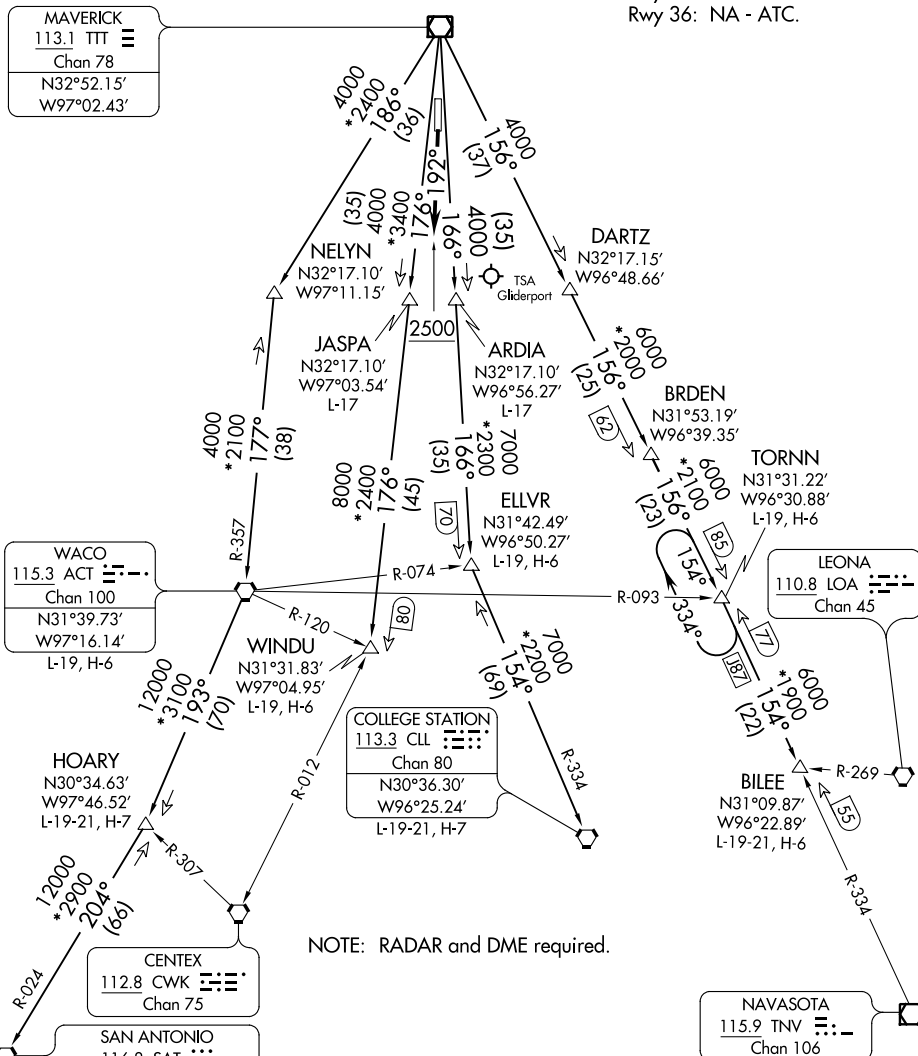
WACO 115.3 ACT
Chan 100
N31°39.73'
W97°16.14'
L-19, H-6

COLLEGE STATION 113.3 CLL
Chan 80
N30°36.30'
W96°25.24'
L-19-21, H-7

CENTEX 112.8 CWK
Chan 75

SAN ANTONIO 116.8 SAT
Chan 115
N29°38.64'-W98°27.68'
L-19, H-7

NAVASOTA 115.9 TNV
Chan 106



NOTE: RADAR and DME required.

(NARRATIVE ON FOLLOWING PAGE)
(NOTES CONTINUED ON FOLLOWING PAGE)

NOTE: Chart not to scale.

JOE POOL FIVE DEPARTURE

SC-2, 16 JUN 2022 to 14 JUL 2022

SC-2, 16 JUN 2022 to 14 JUL 2022