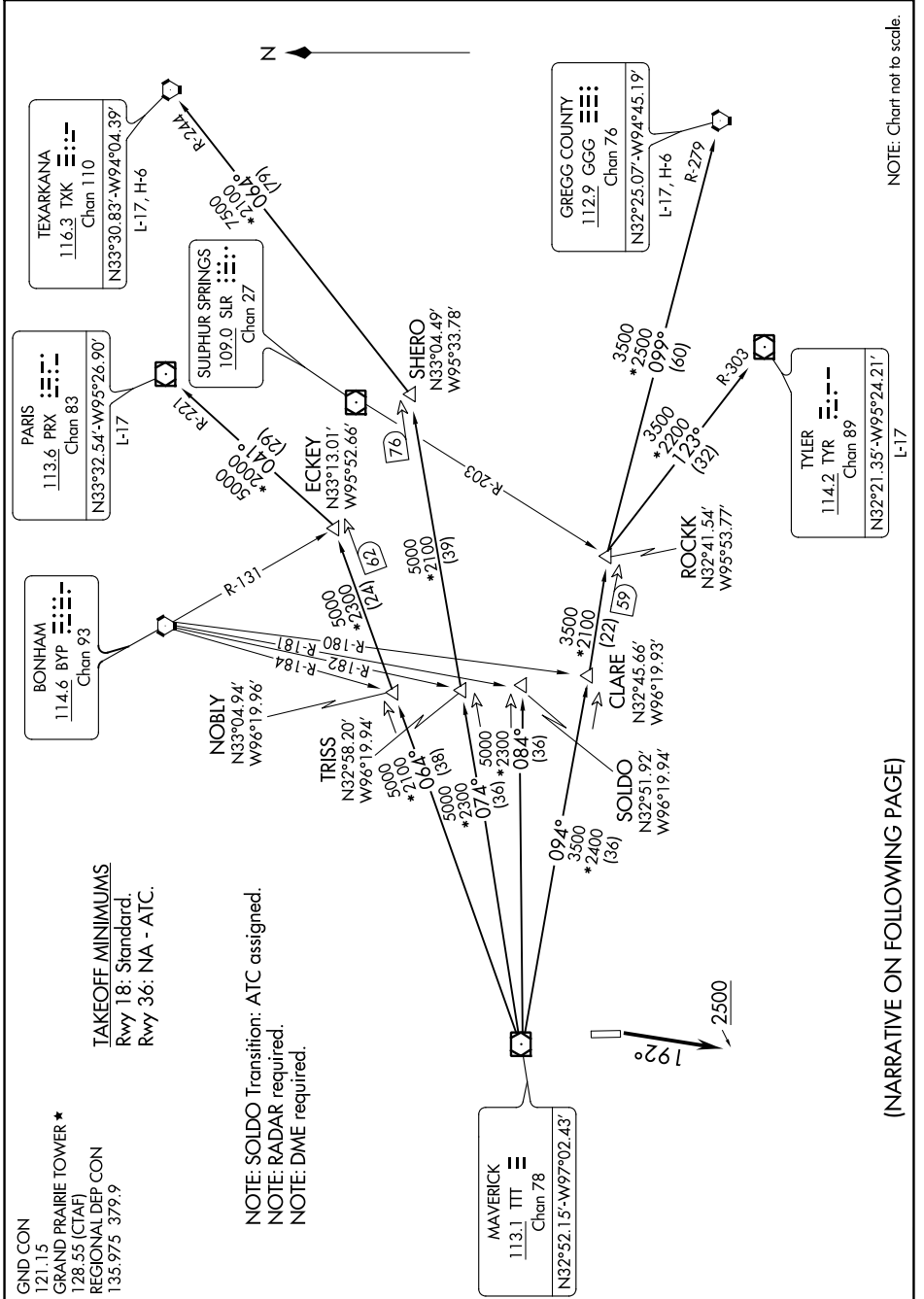


GARLAND THREE DEPARTURE

GRAND PRAIRIE, TEXAS

SC-2, 16 JUN 2022 to 14 JUL 2022



NOTE: Chart not to scale.

(NARRATIVE ON FOLLOWING PAGE)

TAKEOFF MINIMUMS
 Rwy 18: Standard.
 Rwy 36: NA - ATC.

NOTE: SOLDO Transition: ATC assigned.
 NOTE: RADAR required.
 NOTE: DME required.

GND CON
 121.15
 GRAND PRAIRIE TOWER ★
 128.55 (CTAF)
 REGIONAL DEP CON
 135.975 379.9

MAVERICK
 113.1 TTT
 Chan 78
 N32°52.15'-W97°02.43'

TEXARKANA
 116.3 TK
 Chan 110
 N33°30.83'-W94°04.39'

PARIS
 113.6 PRX
 Chan 83
 N33°32.54'-W95°26.90'

BONHAM
 114.6 BYP
 Chan 93

SULPHUR SPRINGS
 109.0 SLR
 Chan 27

ECKEY
 N33°13.01'
 W95°52.66'

SHERO
 N33°04.49'
 W93°33.78'

GREGG COUNTY
 112.9 GGG
 Chan 76
 N32°25.07'-W94°45.19'

TYLER
 114.2 TYR
 Chan 89
 N32°21.35'-W95°24.21'

ROCK
 N32°41.54'
 W95°53.77'

CLARE
 N32°45.66'
 W96°19.93'

SOLIDO
 N32°51.92'
 W96°19.94'

NOBLY
 N33°04.94'
 W96°19.96'

TRISS
 N32°58.20'
 W96°19.94'

SC-2, 16 JUN 2022 to 14 JUL 2022

GARLAND THREE DEPARTURE