

WAAS CH 97601 W36A	APP CRS 360°	Rwy Idg TDZE Apt Elev	3500 675 675
--	------------------------	-----------------------------	---

RNAV (GPS) RWY 36

LEWIS COUNTY RGNL (6M6)

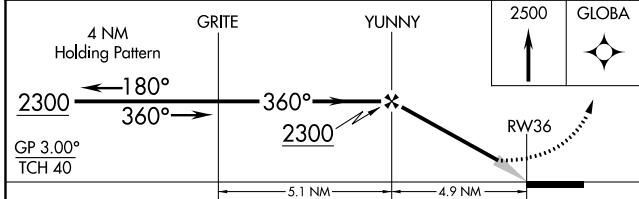
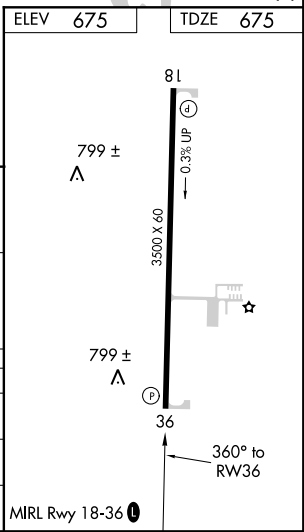
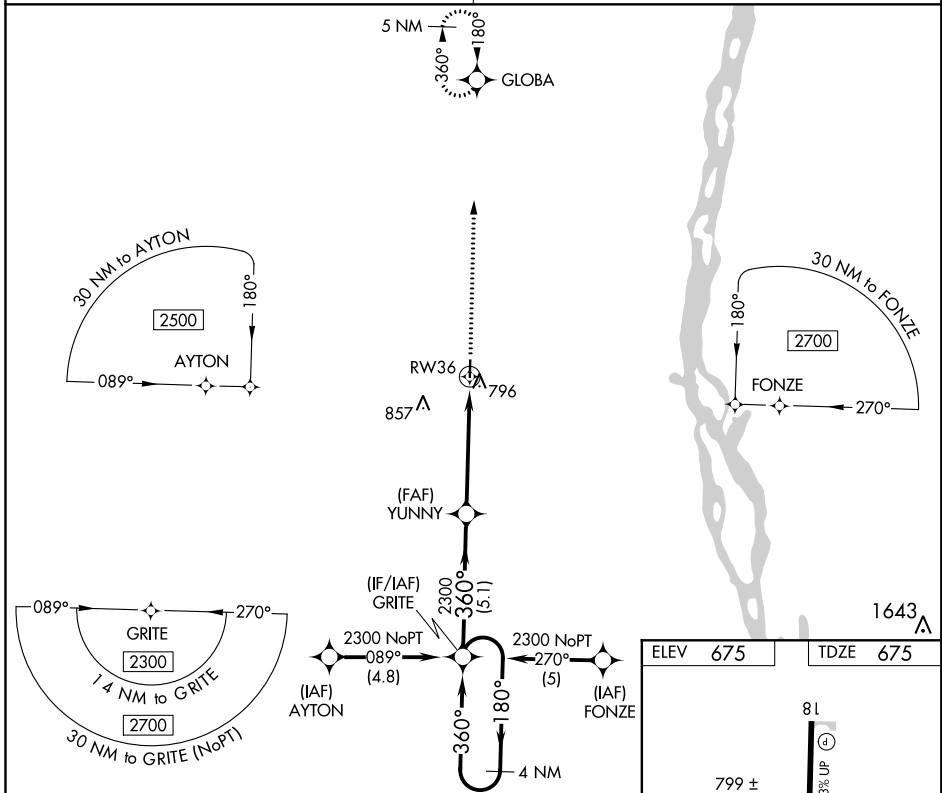
RNP APCH.

▼ Baro-VNAV NA. Use Quincy altimeter setting; if not received, use
▲ NA Kirksville altimeter setting and increase all DAs/MDAs 80 feet.

MISSED APPROACH: Climb to 2500 direct
 GLOBA and hold.

KANSAS CITY CENTER
126.225 317.775

UNICOM
122.7 (CTAF) 0



CATEGORY	A	B	C	D
LPV DA	996-1¼	321 (400-1¼)		NA
LNAV/VNAV DA	1137-1¾	462 (500-1¾)		NA
LNAV MDA	1120-1	445 (500-1)		NA

NC-3, 16 JUN 2022 to 14 JUL 2022

NC-3, 16 JUN 2022 to 14 JUL 2022