

VORTAC RDU 117.2 Chan 119	APP CRS 077°	Rwy Idg TDZE Apt Elev N/A N/A 368
---	------------------------	---

VOR-A

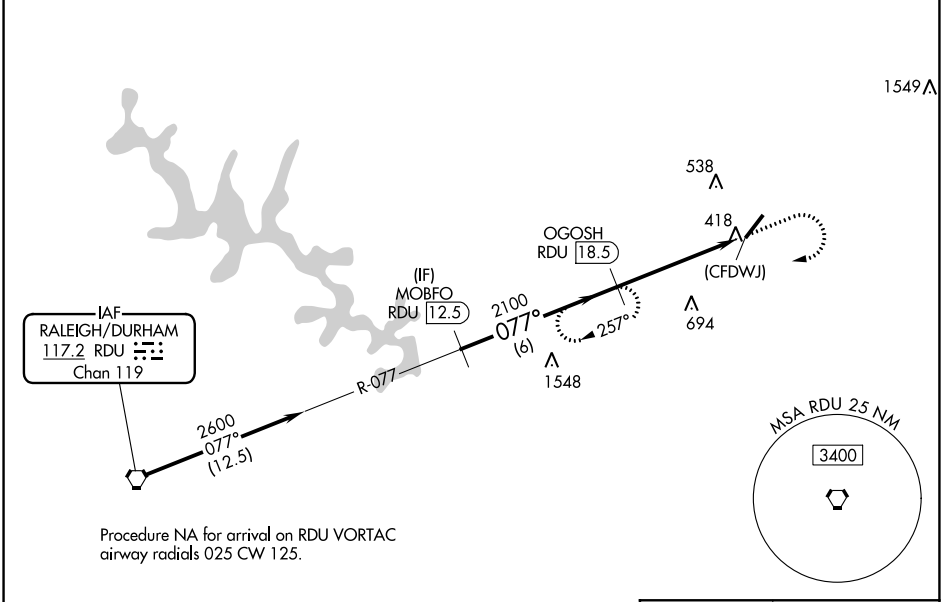
TRIANGLE NORTH EXEC (L.H.Z)

DME required.

- ▼ When local altimeter not received, use Raleigh-Durham Intl altimeter setting and increase all MDA 80 feet and Cats B/C visibility ¼ SM.
- ▲

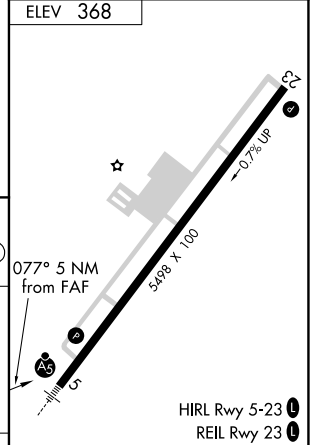
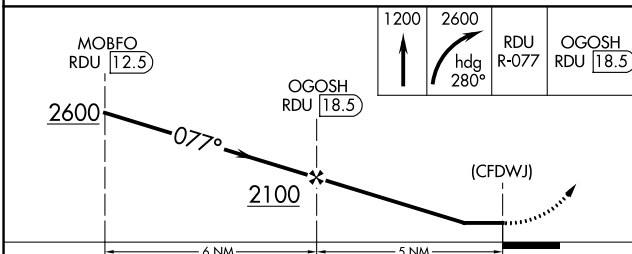
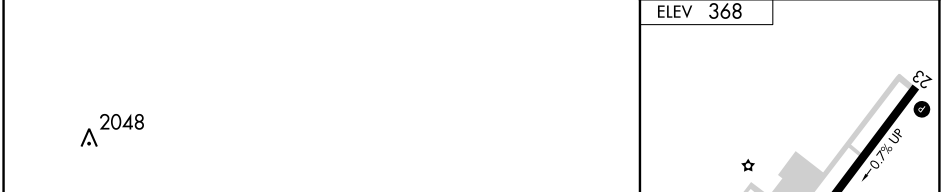
MISSED APPROACH: Climb to 1200 then climbing right turn to 2600 on heading 280° and on RDU VORTAC R-077 to OGOSH/RDU 18.5 DME and hold.

AWOS-3 118.325	RALEIGH APP CON 125.3 353.675	UNICOM 123.0 (CTAF) 0
--------------------------	---	---------------------------------



SE-2, 16 JUN 2022 to 14 JUL 2022

SE-2, 16 JUN 2022 to 14 JUL 2022



CATEGORY	A	B	C	D	FAF to MAP 5 NM							
	1260-1¼ 892 (900-1¼)		1260-2¾ 892 (900-2¾)		1260-3 892 (900-3)		Knots	60	90	120	150	180
CIRCLING							Min:Sec	5:00	3:20	2:30	2:00	1:40

VOR-A