

| | | |
|--|------------------------|---|
| WAAS CH 45834 W09A | APP CRS 095° | Rwy Idg 4557 TDZE 9 Apt Elev 9 |
|--|------------------------|---|

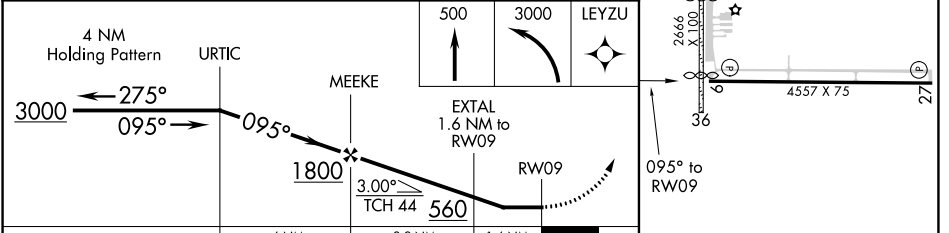
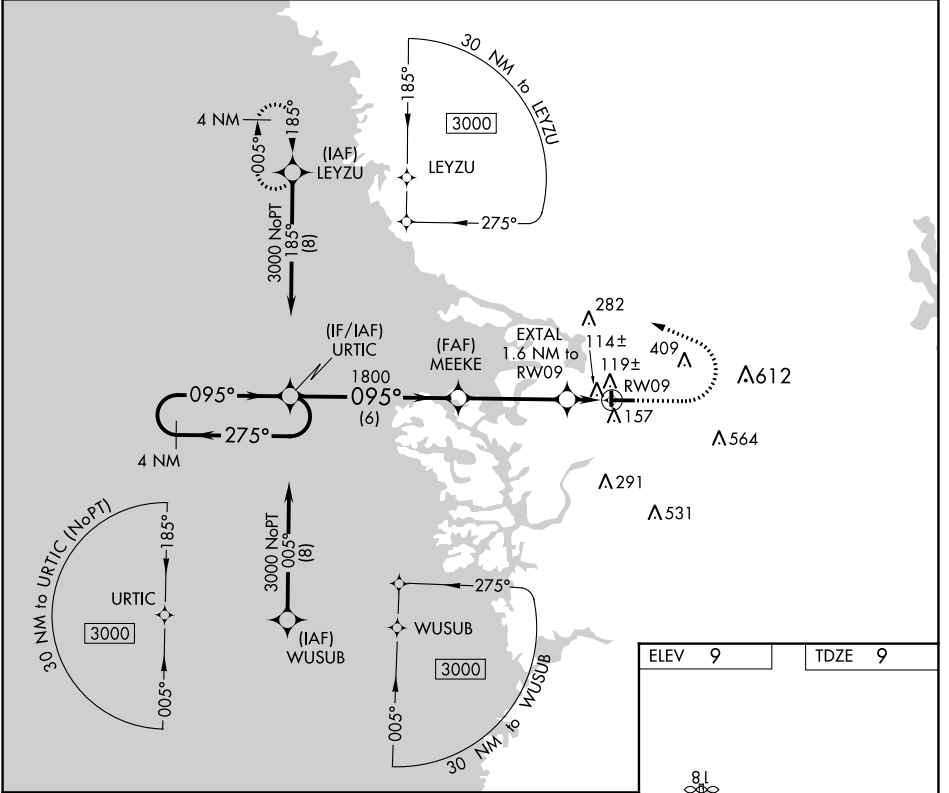
RNAV (GPS) RWY 9

CRYSTAL RIVER-CAPTAIN TOM DAVIS FIELD (CGC)

▼ Procedure NA at night. DME/DME RNP-0.3 NA. When local altimeter setting not received, use Ocala altimeter setting and increase all MDA 80 feet; increase LP Cat C/D visibility $\frac{3}{8}$ mile, LNAV Cat C/D visibility $\frac{1}{4}$ mile and Circling Cat C/D visibility $\frac{1}{4}$ mile. Helicopter visibility reduction below 1 SM NA.

▲ MISSED APPROACH: Climb to 500 then climbing left turn to 3000 direct LEYZU and hold.

| | | |
|--------------------------|---|-----------------------------------|
| AWOS-3 118,325 | JACKSONVILLE APP CON 118.6 251.15 | UNICOM 122.725 (CTAF) 0 |
|--------------------------|---|-----------------------------------|



| | | | | | | |
|-------------------|----------------------|----------------------|---|---|-----------------|----------------------|
| CATEGORY | A | B | C | D | ELEV 9 | TDZE 9 |
| LP MDA | 380-1 | | 371 (400-1) | | | |
| LNAV MDA | 420-1 | 411 (500-1) | 420-1 $\frac{1}{8}$ | 411 (500-1 $\frac{1}{8}$) | | |
| C CIRCLING | 460-1 451 (500-1) | 540-1 531 (600-1) | 760-2 $\frac{1}{4}$ 751 (800-2 $\frac{1}{4}$) | 880-2 $\frac{3}{4}$ 871 (900-2 $\frac{3}{4}$) | MIRL Rwy 9-27 0 | REIL Rlys 9 and 27 0 |

SE-3, 16 JUN 2022 to 14 JUL 2022

SE-3, 16 JUN 2022 to 14 JUL 2022