

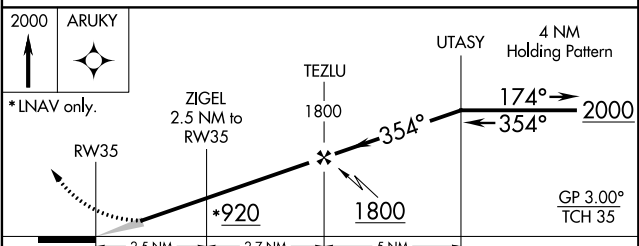
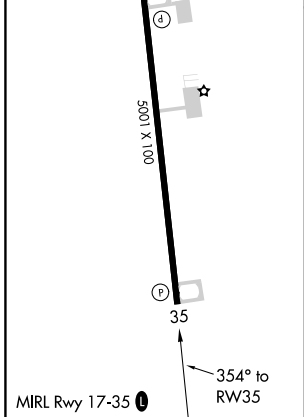
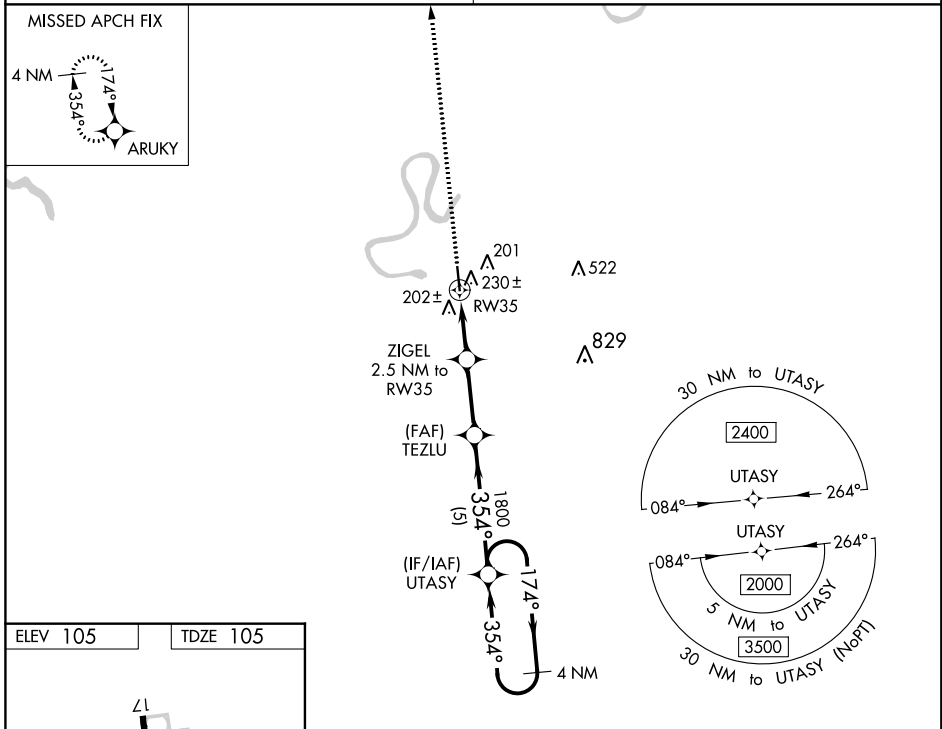
WAAS CH 99431 W35A	APP CRS 354°	Rwy Ldg TDZE Apt Elev	5001 105 105
--	------------------------	-----------------------------	---

RNAV (GPS) RWY 35

YAZOO COUNTY (87I)

RNP APCH.	MISSED APPROACH: Climb to 2000 direct ARUKY and hold.
<p>▼ Baro-VNAV NA. ▲ NA Use Madison altimeter setting; when not received, use Jackson altimeter setting and increase all DA 8 feet and all MDA 20 feet.</p>	

MEMPHIS CENTER 132.5 259.1	UNICOM 122.8 (CTAF) 1
--------------------------------------	---------------------------------



CATEGORY	A	B	C	D
LPV DA		461-1¼	356 (400-1¼)	
LNAV/VNAV DA		606-1¾	501 (500-1¾)	
LNAV MDA	600-1	495 (500-1)	600-1⅜	495 (500-1⅜)

SC-4, 16 JUN 2022 to 14 JUL 2022

SC-4, 16 JUN 2022 to 14 JUL 2022