

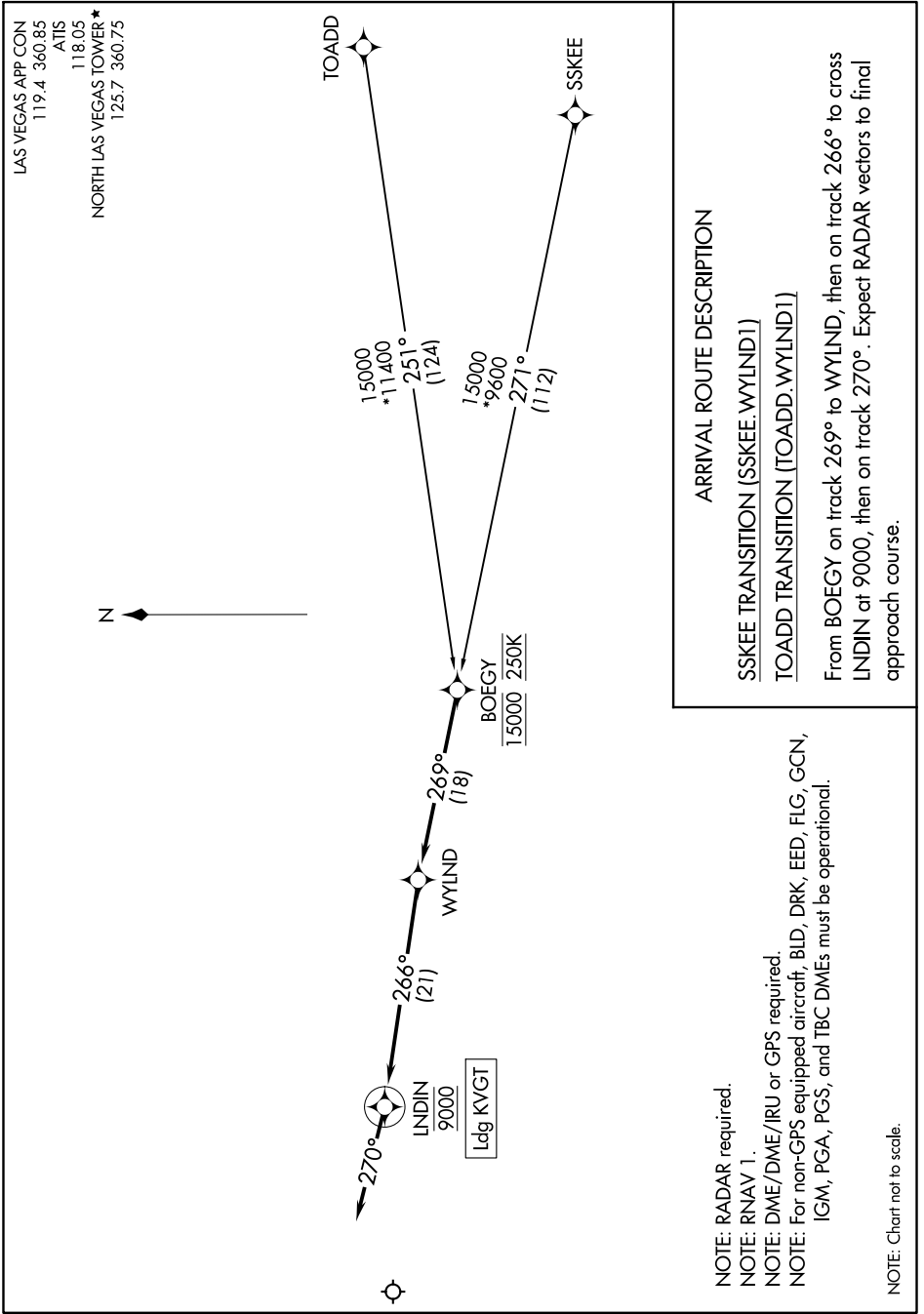
(BOEGY.WYLND1) 21056

WYLND ONE ARRIVAL (RNAV)

AL-6970 (FAA)

NORTH LAS VEGAS (VGT)
LAS VEGAS, NEVADA

SW-4, 16 JUN 2022 to 14 JUL 2022



ARRIVAL ROUTE DESCRIPTION

- SSKEE TRANSITION (SSKEE.WYLND1)
- TOADD TRANSITION (TOADD.WYLND1)

From BOEGY on track 269° to WYLND, then on track 266° to cross LNDIN at 9000, then on track 270°. Expect RADAR vectors to final approach course.

- NOTE: RADAR required.
- NOTE: RNAV 1.
- NOTE: DME/DME/IRU or GPS required.
- NOTE: For non-GPS equipped aircraft, BLD, DRK, EED, FLG, GCN, IGM, PGA, PGS, and TBC DMEs must be operational.

NOTE: Chart not to scale.

SW-4, 16 JUN 2022 to 14 JUL 2022

WYLND ONE ARRIVAL (RNAV)

(BOEGY.WYLND1) 25FEB21

LAS VEGAS, NEVADA
NORTH LAS VEGAS (VGT)