

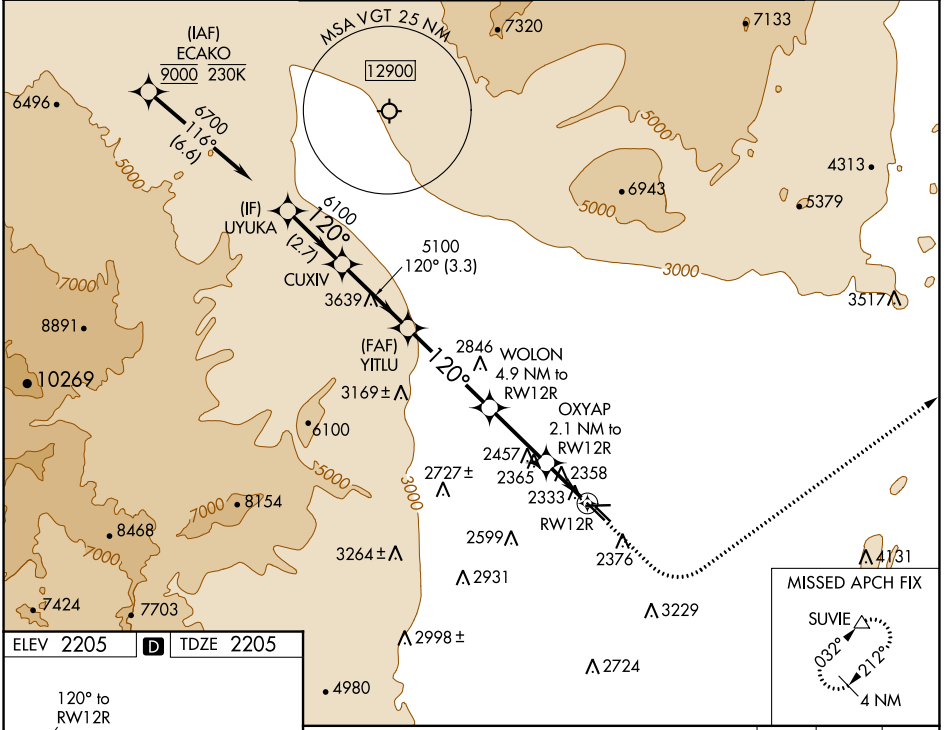
WAAS CH <b>69443</b> <b>W12A</b>	APP CRS <b>120°</b>	Rwy Idg TDZE Apt Elev	<b>5000</b> <b>2205</b> <b>2205</b>
--	------------------------	-----------------------------	---

# RNAV (GPS) RWY 12R

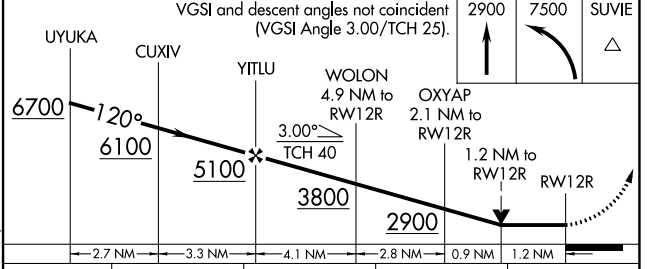
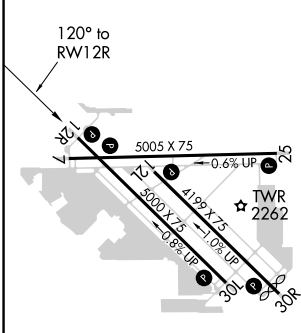
NORTH LAS VEGAS (VGT)

RNP APCH.	MISSED APPROACH: Climb to 2900 then climbing left turn to 7500 direct SUVIE and hold, continue climb-in-hold to 7500.
Rwy 12R helicopter visibility reduction below 3/4 SM NA.	

ATIS <b>118.05</b>	LAS VEGAS APP CON <b>119.4 360.85</b>	NORTH LAS VEGAS TOWER* <b>125.7 (CTAF) 360.75</b>	GND CON <b>121.7</b>	CLNC DEL <b>124.0</b>	UNICOM <b>122.95</b>
-----------------------	--	--	-------------------------	--------------------------	-------------------------



ELEV 2205	<b>D</b>	TDZE 2205
-----------	----------	-----------



CATEGORY	A	B	C	D
LP MDA	2620-1	415 (500-1)	2620-1 1/8	415 (500-1 1/8)
LNAV MDA	2820-1	615 (700-1)	2820-1 3/4	615 (700-1 3/4)
<b>C</b> CIRCLING	2820-1	615 (700-1)	2840-1 3/4 635 (700-1 3/4)	3540-3 1335 (1400-3)

REIL all Rwys   
MIRL all Rwys

SW-4, 16 JUN 2022 to 14 JUL 2022

SW-4, 16 JUN 2022 to 14 JUL 2022