

LOC/DME I-HWGW <b>110.7</b> Chan <b>44</b>	APP CRS <b>120°</b>	Rwy Idg TDZE Apt Elev	<b>4199</b> <b>2189</b> <b>2205</b>
--	------------------------	-----------------------------	---

# ILS or LOC RWY 12L

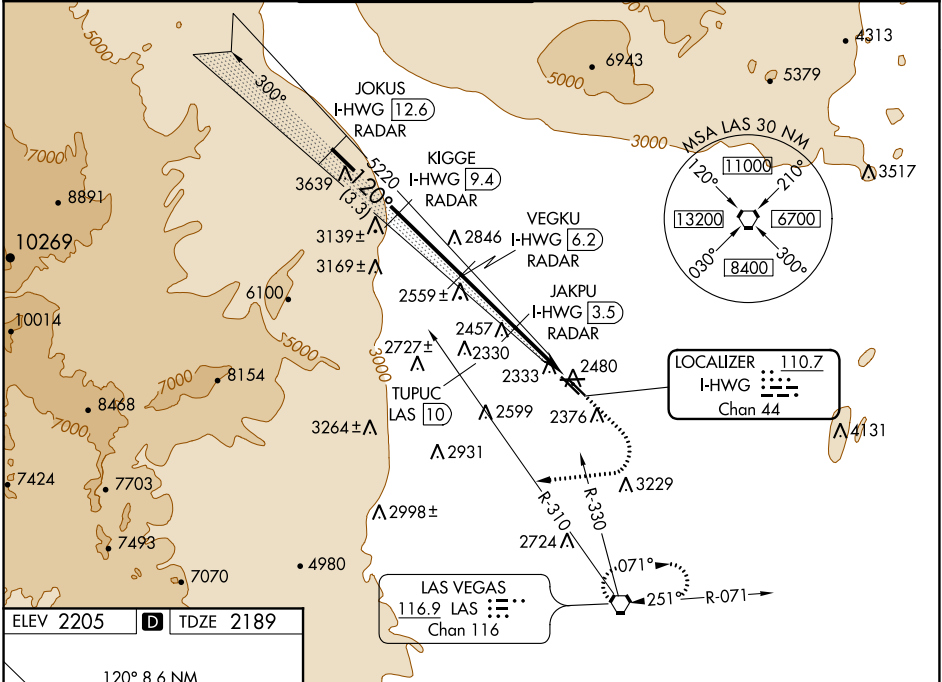
NORTH LAS VEGAS (VGT)

DME and RADAR required.

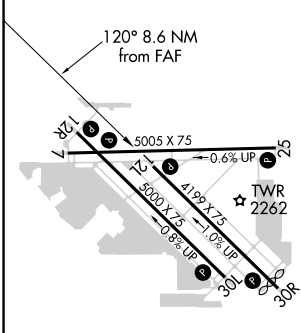
▼ When local altimeter setting not received, use Harry Reid Intl altimeter setting and increase DA to 2478, and visibility Cats A/B ¼ mile; increase all MDA 40 feet. Rwy 12L helicopter visibility reduction below ¾ SM NA.

MISSED APPROACH: Climb to 2600, then climbing right turn heading 250° to 6000, intercept LAS R-310 outbound to TUPUC/LAS 10 DME then turn right via LAS R-330 inbound to LAS VORTAC and hold.

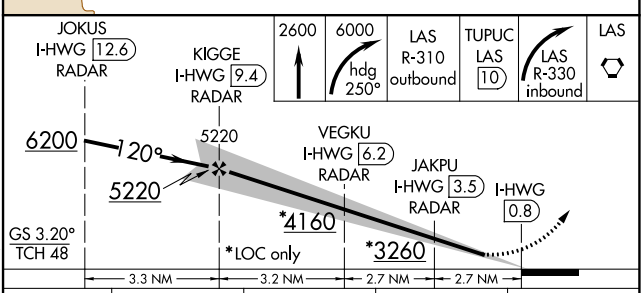
ATIS <b>118.05</b>	LAS VEGAS APP CON <b>119.4 360.85</b>	NORTH LAS VEGAS TOWER * <b>125.7 (CTAF) 360.75</b>	GND CON <b>121.7</b>	CLNC DEL <b>124.0</b>	UNICOM <b>122.95</b>
-----------------------	--	---	-------------------------	--------------------------	-------------------------



ELEV 2205	<b>D</b>	TDZE 2189
-----------	----------	-----------



REIL all Rwy's	MIRL all Rwy's
FAF to MAP 8.6 NM	
Knots	60 90 120 150 180
Min:Sec	8:36 5:44 4:18 3:26 2:52



CATEGORY	A	B	C	D
S-ILS 12L	2456-1	267 (300-1)		NA
S-LOC 12L	2620-1	431 (500-1)		NA
<b>C</b> CIRCLING	2720-1	515 (600-1)		NA

SW-4, 16 JUN 2022 to 14 JUL 2022

SW-4, 16 JUN 2022 to 14 JUL 2022