

VOR/DME ETL 110.2 Chan 39	APP CRS 095°	Rwy Idg TDZE Apt Elev N/A N/A 9070
---	------------------------	---

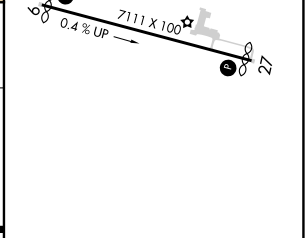
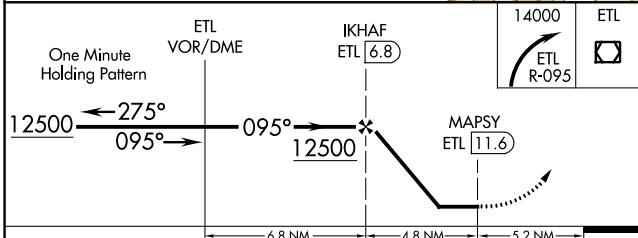
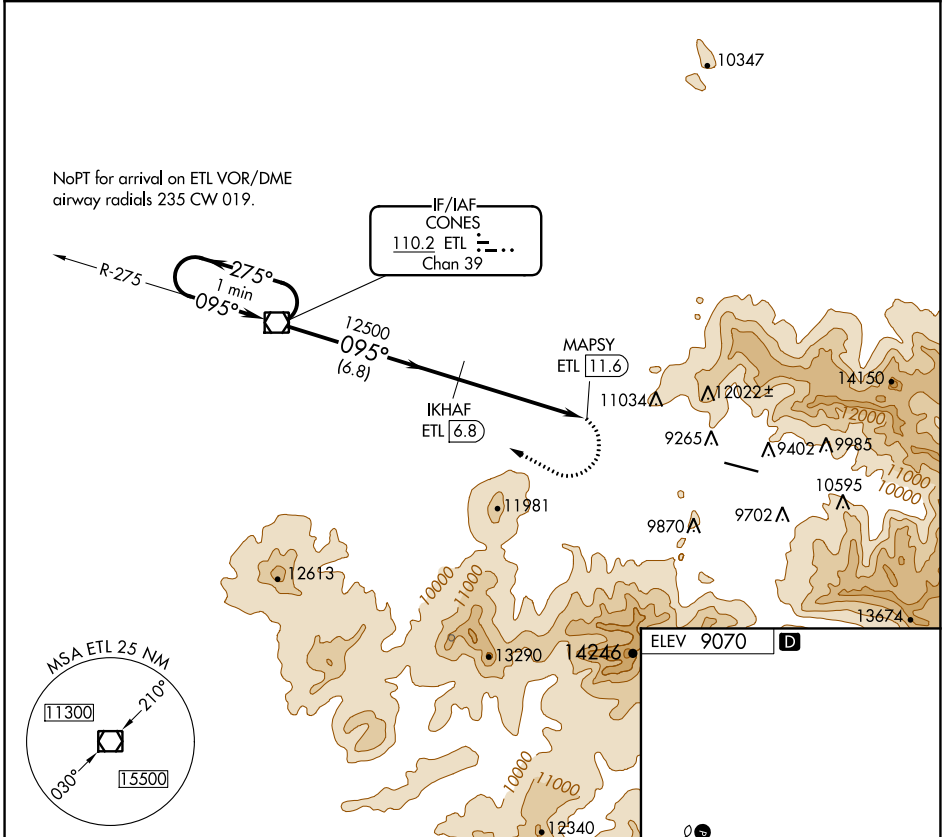
VOR/DME-A

TELLURIDE RGNL (TEX)

⚠ Circling NA north of Rwy 9-27.
❄ -18°C Procedure NA at night.

MISSED APPROACH: Immediate climbing right turn to 14000 via ETL VOR/DME R-095 to ETL VOR/DME and hold.

AWOS-3 118.325	DENVER CENTER 125.35 354.05	UNICOM 123.0 (CTAF) ①
--------------------------	---------------------------------------	---------------------------------



CATEGORY	A	B	C	D
Ⓢ CIRCLING	12420-6	3350 (3400-6)	NA	

HIRL Rwy 9-27 ①
REIL Rwy 9 and 27 ①

SW-1, 16 JUN 2022 to 14 JUL 2022

SW-1, 16 JUN 2022 to 14 JUL 2022