

KUSSO ONE DEPARTURE (RNAV)

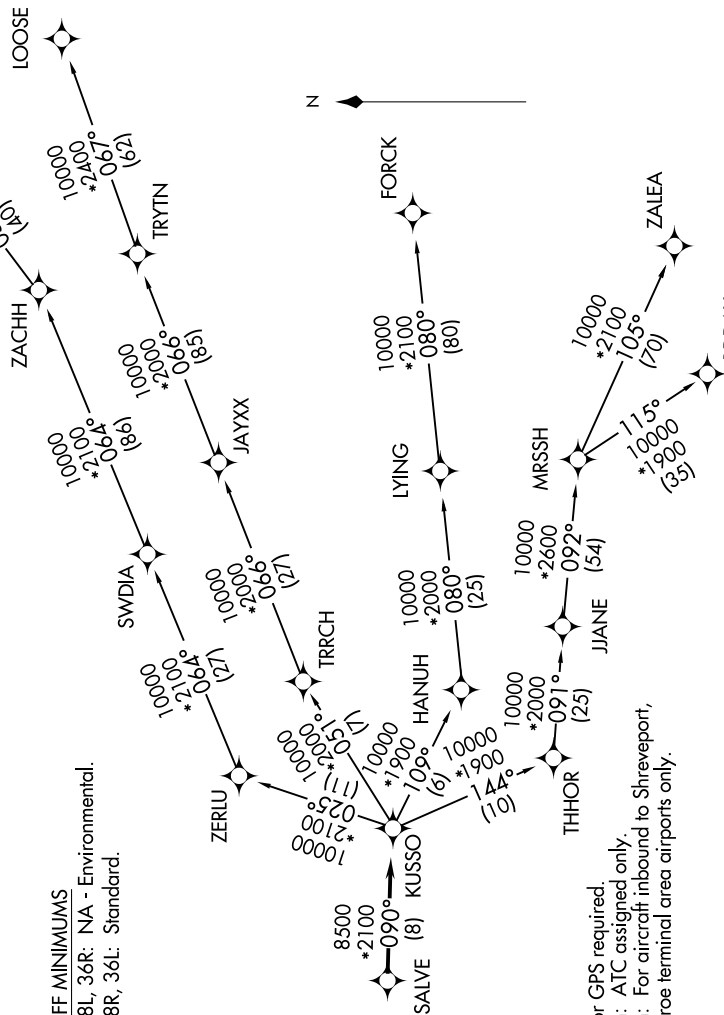
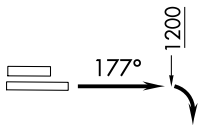
SC-2, 16 JUN 2022 to 14 JUL 2022

**TOP ALTITUDE:
ASSIGNED BY ATC**

ATIS
120.025
GND CON
119.475
SPINKS TOWER *
124.625 (CTAF)
REGIONAL DEP CON
135.975 379.9

TAKEOFF MINIMUMS

Rwys 18L, 36R: NA - Environmental.
Rwys 18R, 36L: Standard.



NOTE: RADAR required.
NOTE: RNAV 1.
NOTE: DME/DME/IRU or GPS required.
NOTE: BDDAY Transition: ATC assigned only.
NOTE: MRSSH Transition: For aircraft inbound to Shreveport, Jackson and Monroe terminal area airports only.

(NARRATIVE ON FOLLOWING PAGE)

NOTE: Chart not to scale.

SC-2, 16 JUN 2022 to 14 JUL 2022