

LOC I-JZW <b>110.95</b>	APP CRS <b>357°</b>	Rwy Idg 6002	TDZE 697
		Apt Elev 700	

# ILS or LOC RWY 36L

FORT WORTH SPINKS (FWS)

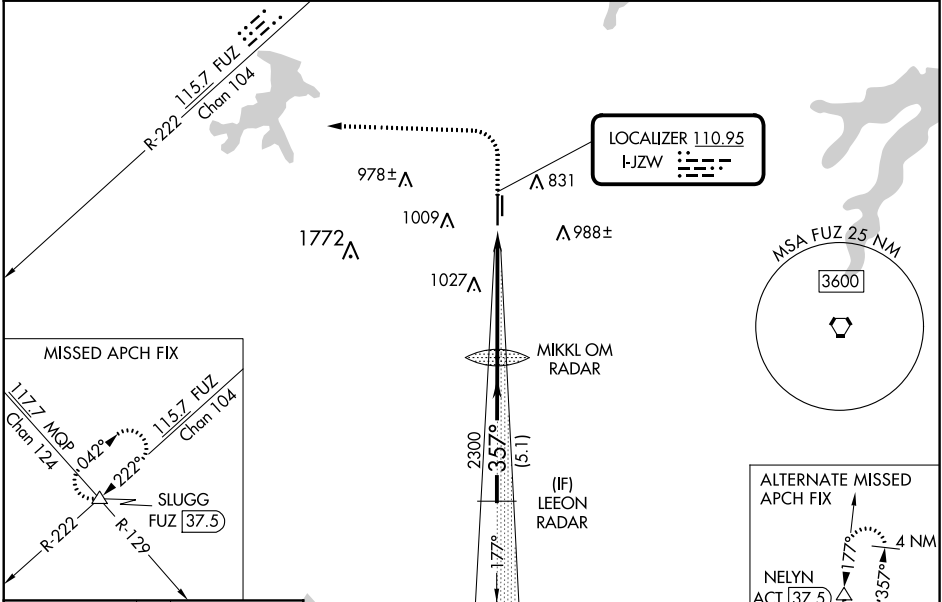
RADAR required for procedure entry.

**NA** Circling NA west of Rwy 18R-36L. For inop ALS increase S-LOC 36L Cat C/D visibility to 1 1/4 SM.

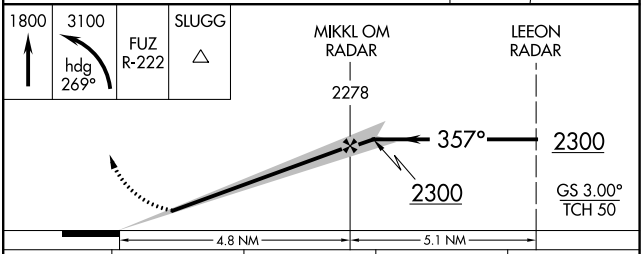
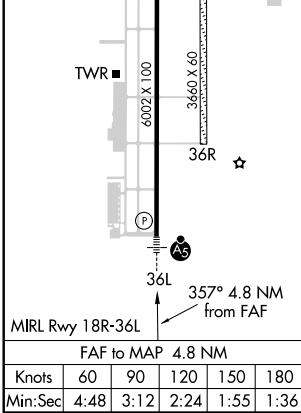
MALS R

MISSED APPROACH: Climb to 1800 then climbing left turn to 3100 on heading 269° and FUZ VORTAC R-222 to SLUGG INT/ FUZ 37.5 DME and hold.

ATIS <b>120.025</b>	REGIONAL APP CON <b>135.975 379.9</b>	SPINKS TOWER ★ <b>124.625 (CTAF)</b>	GND CON <b>119.475</b>	UNICOM <b>122.7</b>
------------------------	--	---	---------------------------	------------------------



ELEV 700	TDZE 697
----------	----------



CATEGORY	A	B	C	D
S-ILS 36L	897-1/2 200 (200-1/2)			
S-LOC 36L	1320-1/2 623 (700-1/2)	1320-1 3/8 623 (700-1 3/8)		
CIRCLING	1320-1 620 (700-1)	1340-1 3/4 640 (700-1 3/4)	1340-2 640 (700-2)	

SC-2, 16 JUN 2022 to 14 JUL 2022

SC-2, 16 JUN 2022 to 14 JUL 2022