

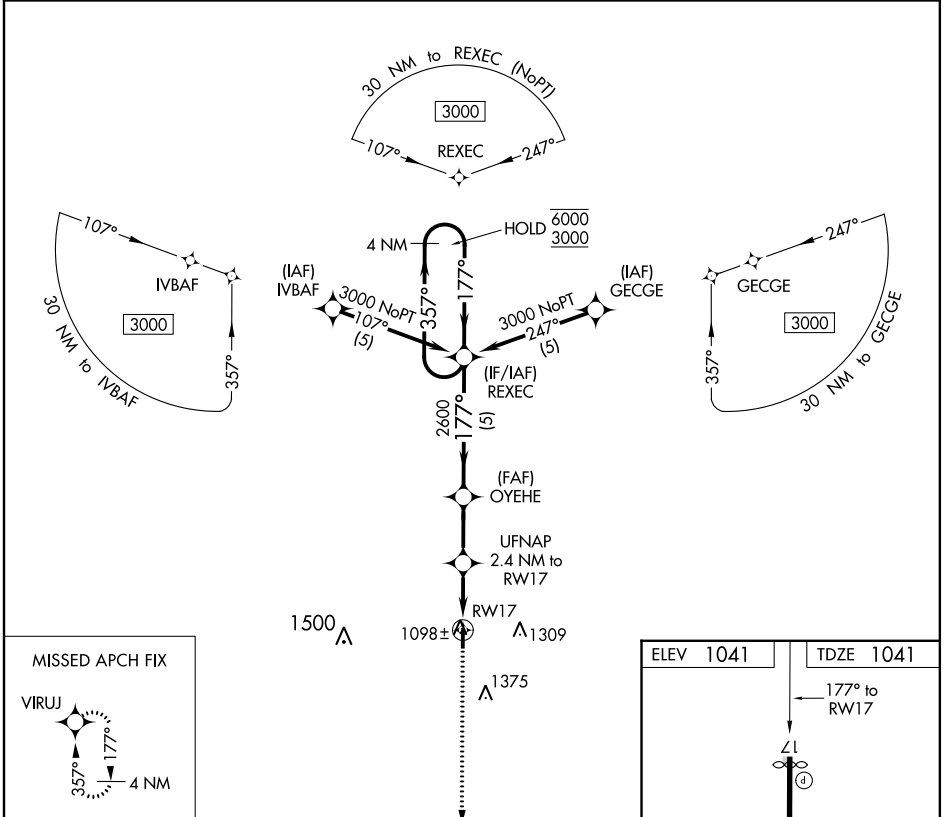
APP CRS	Rwy Idg	3490
177°	TDZE	1041
	Apt Elev	1041

RNAV (GPS) RWY 17

PRAGUE MUNI (O47)

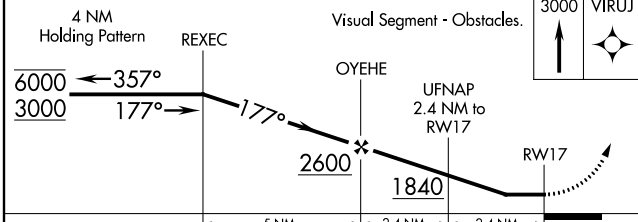
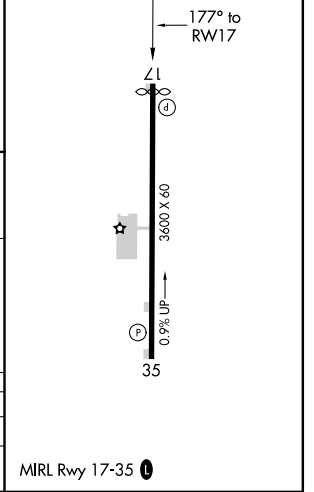
RNP APCH.	<p>Procedure NA at night. Rwy 17 helicopter visibility reduction below 1 SM NA.</p> <p>▲ NA Use Shawnee altimeter setting. When not received, use Seminole altimeter setting.</p>	MISSED APPROACH: Climb to 3000 direct VIRUJ and hold.
-----------	---	--

FORT WORTH CENTER 132.2 338.35	CTAF 122.9 0
--	------------------------



MISSED APCH FIX

ELEV 1041	TDZE 1041
-----------	-----------



CATEGORY	A	B	C	D
LNAV MDA	1400-1		359 (400-1)	NA
CIRCLING	1480-1 439 (500-1)	1500-1 459 (500-1)	1720-2 679 (700-2)	NA

MIRL Rwy 17-35 0

SC-1, 16 JUN 2022 to 14 JUL 2022

SC-1, 16 JUN 2022 to 14 JUL 2022